



GENERAL PRODUCT CATALOGUE


Precast concrete equipment

DESIGN
MANUFACTURING
& INSTALLATION

Your long-term partner







At Moldtech we are at your disposal to provide innovative solutions to any kind of need in the area of moulds for the prefabricated concrete industry, ranging from a custom designed mould to the installation of fully equipped plants on turn-key basis.

Our factory, covering more than 15.000 sqm, has the latest production technology and our workforce consists of a highly skilled and motivated production team. We have our own design department where our engineers create new products and adapt existing designs to the specific needs of our clients. In addition, as a specialised company, we have the ability to be flexible and to have close and efficient communication channels with our customers.

We offer a full-service approach that begins in the design stage and covers aspects like on-site installation, test production and after-sales service. Nowadays our products are exported to 5 continents and international sales represent about 95% of our business revenue. This catalogue will give you a first idea about what we do and who we are, but we'll gladly provide you more information in order to explore possibilities of future cooperation.

ABOUT US



INDEX

07 Introduction

- 7 Business
- 8 Value Chain
- 9 Projects
- 10 Key figures

11 Industrial

- 13 Multiposition Versatile Mould for Column
- 15 Single Mould for Column
- 16 Double Mould for Column
- 17 Use of Precast Columns in Industrial Buildings
- 19 Universal Casting Bed Systems
- 21 Universal Casting Bed System with Interchangeable Bottom
- 23 Hydraulic Casting Beds
- 25 Mould Sides for Prestressed Elements
- 27 Pit foundations Prestressing Systems
- 29 Self-reacting Prestressing Systems
- 32 Self-reacting Mould for TT Slabs
- 35 Self-reacting Mould for H Beams
- 37 Roof Beam
- 38 Mould for Reinforced Beam
- 39 Mould sides for U-shaped beams
- 41 Tilting Table

45 Residential

- 49 Tilting Table
- 51 Stationary Table for Prestressed Floor Slabs
- 53 Mould for Sandwich Panels
- 54 Turning System for Double Walls
- 54 Double Book Mould
- 55 Battery Mould for Panels
- 58 Vertical Mould for Staircases
- 60 Horizontal Mould for Staircases

- 61 3D VOLUMETRIC CONSTRUCTION
- 63 Industrialized Construction
- 65 Prefabricated Bathroom Units (PBU)
- 67 Prefabricated Pre-finished Volumetric Elements (PPVC)
- 71 Mould for Elevator Shaft
- 73 Turner 180° for 3D Elements

75 Civil Works

- 77 Moulds and Universal Casting Bed Systems for Bridge Girder
- 82 Moulds and Universal Casting Bed Systems for Prestressed Box Girder
- 85 Special System for Railway Line
- 87 Bridge Piers
- 88 Post-tensioned Girders for Civil Works
- 89 Mould for Diaphragms
- 90 Fixed Tables for Bridge Half-slabs
- 91 Precast Elements for Roads and Bridges
- 94 Mould for Highway Retaining Walls
- 95 Mould for Drainage Gutter
- 96 MT-20 Dry-cast System for Vibropressed Box Culverts
- 99 Turning Machines 90° for Box Culverts and Tubes
- 100 Modular Mould for Wet Cast Culverts
- 102 Mould for Large 3-sided Culverts
- 103 Mould for Prison Cells
- 107 Moulds for New Jersey Barriers
- 110 Carousel lines for precast elements

112 Special Elements

118 Concrete Pouring

123 Accessories

133 Logistics and installation

135 Post-sale services

138 Quality

139 Safety

141 Development engineering

BUSINESS

In this new era in which agility, and flexibility to provide solutions to market requirements are essential factors. Industrialisation becomes a key element, since it is one of the most attractive solutions for developers and also for final users. It is necessary to stop thinking in a traditional way and we need to apply the industrial approach.

DESIGN, MANUFACTURE AND INSTALLATION OF EQUIPMENT FOR PRECAST CONCRETE FOR



CIVIL WORK



INDUSTRIAL



RESIDENTIAL

A COMPANY COMMITTED TO COMPETITIVENESS,
DELIVERY TIMES AND PROFESSIONAL SERVICE FOR
CUSTOM-BUILT PROJECTS.

MOLDTECH IS A FAMILY BUSINESS CREATED IN
1986, TO BECOME A WORLD REFERENCE IN THE
PRECAST CONCRETE SECTOR.

We reinvest annual profits to improve methods,
knowledge and capacity to continually
strengthen the company.

VALUE CHAIN

MOLDTECH DEVELOPES FLEXIBLE AND INTEGRAL PROJECTS ADAPTED TO THE HIGHEST STANDARDS OF QUALITY, PRODUCTIVITY AND SAFETY.

We aim to serve daily to our clients with efficiency, proactivity and closeness.



**ADVANCED
FACILITIES
+15,000 M2**



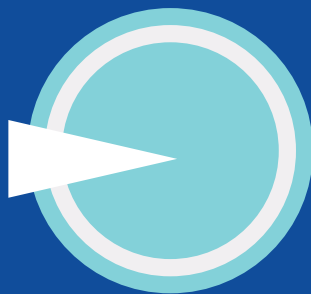
**MULTIDISCIPLINAR
Y AND EXPERT
TEAM**

8,000 m2 PRODUCTION FACILITY
1,500 m2 CNC MACHINING AREA

PROJECTS

WE OFFER OUR CLIENTS BOTH THE BASIC DESIGN, MANUFACTURING AND MAINTENANCE OF MOULDS FOR PRECAST CONCRETE, AS WELL AS THE START-UP OF A COMPREHENSIVE PRODUCTION PLANT.

NATIONAL
5%

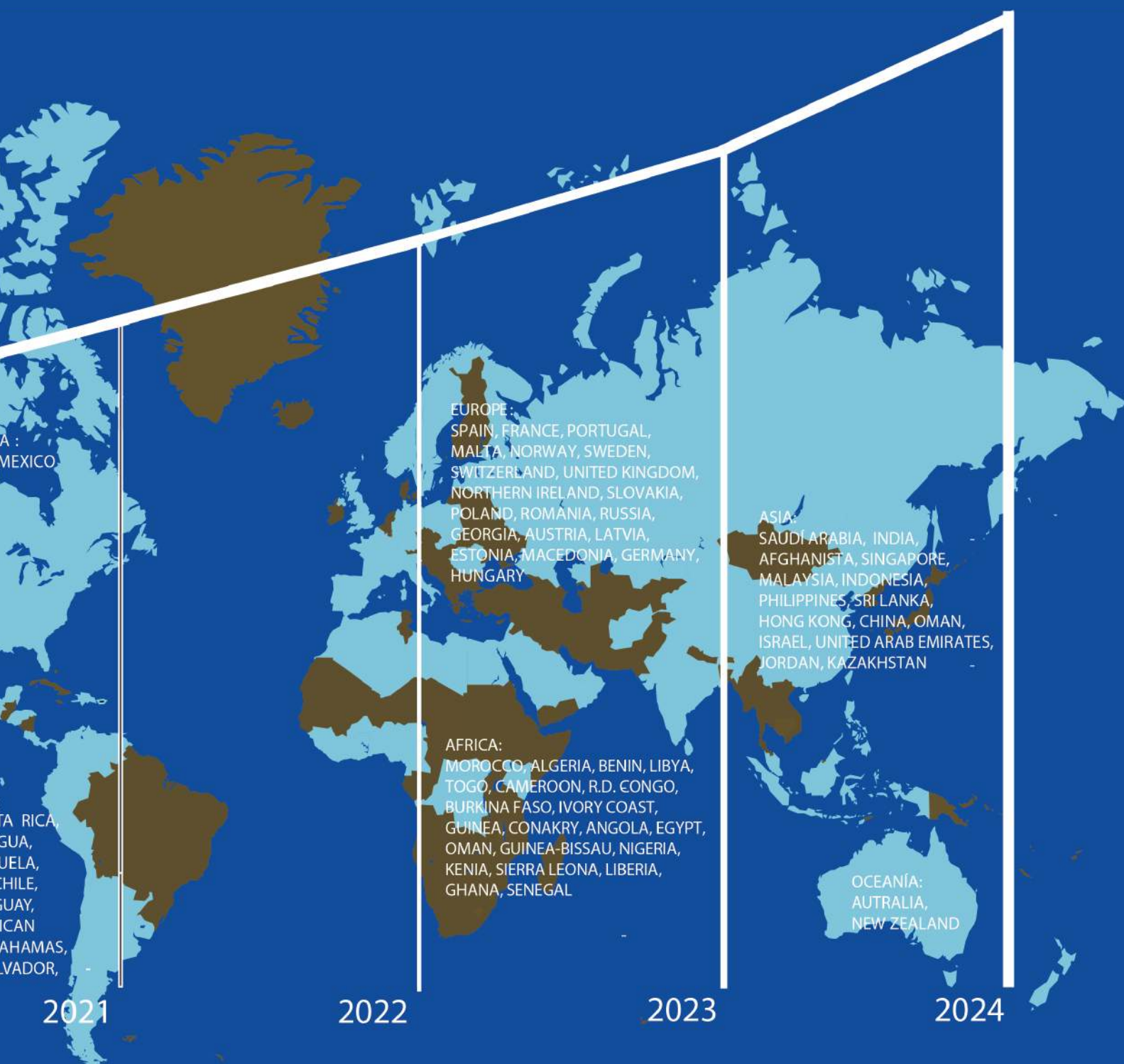


INTERNATIONAL
95%

PROJECTS IN MORE THAN 70 COUNTRIES



KEY FIGURES

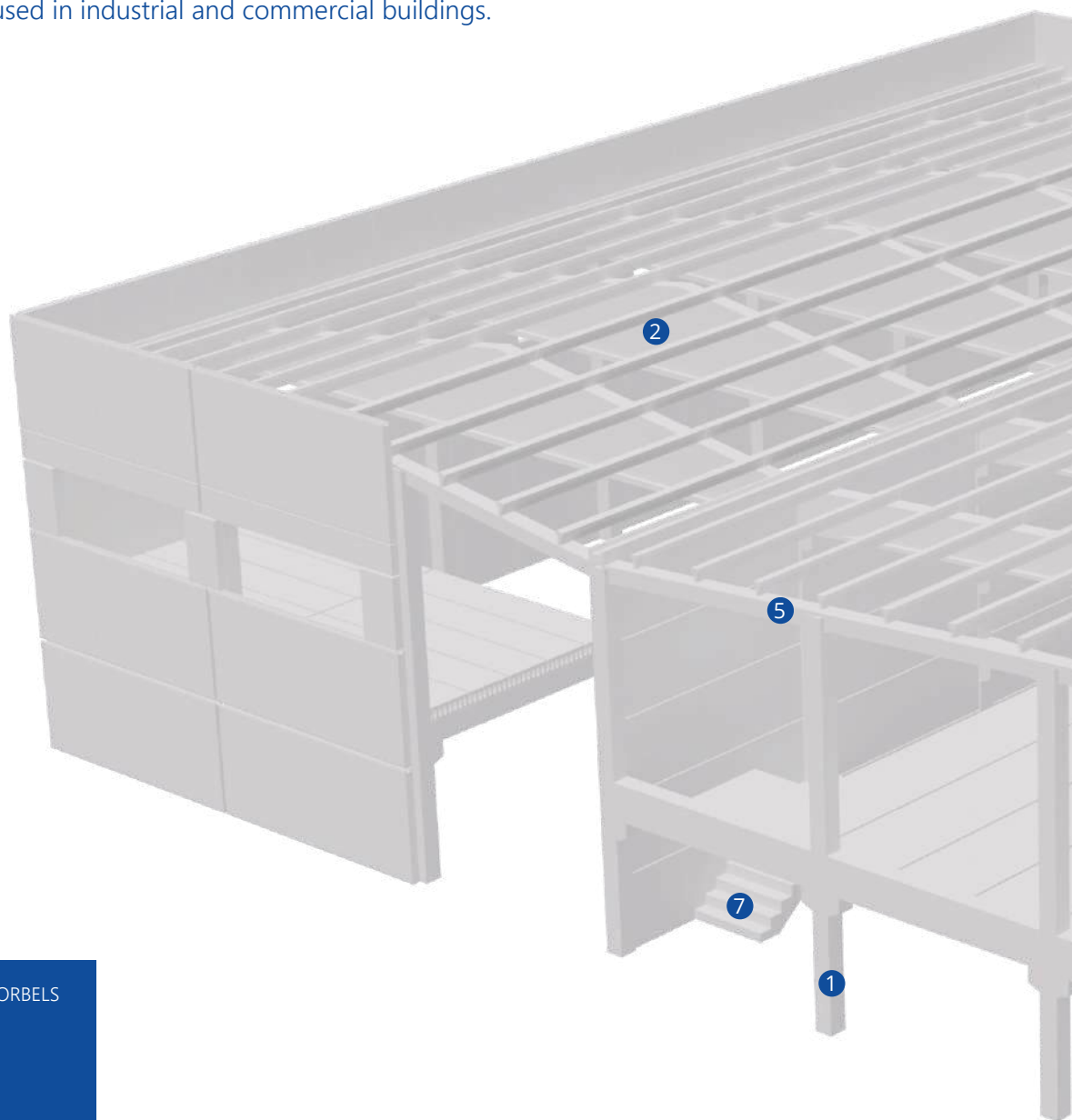


COMPREHENSIVE RESPONSE

95% OF OUR SALES ARE INTERNATIONAL, WITH PROJECTS ON 5 CONTINENTS.

INDUSTRIAL

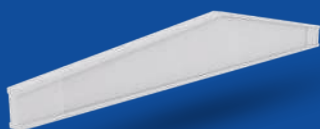
This section describes our main equipment and moulds for the production of precast concrete elements used in industrial and commercial buildings.



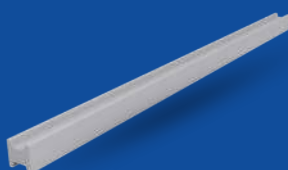
1 COLUMN WITH CORBELS



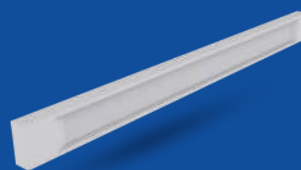
2 DELTA BEAM

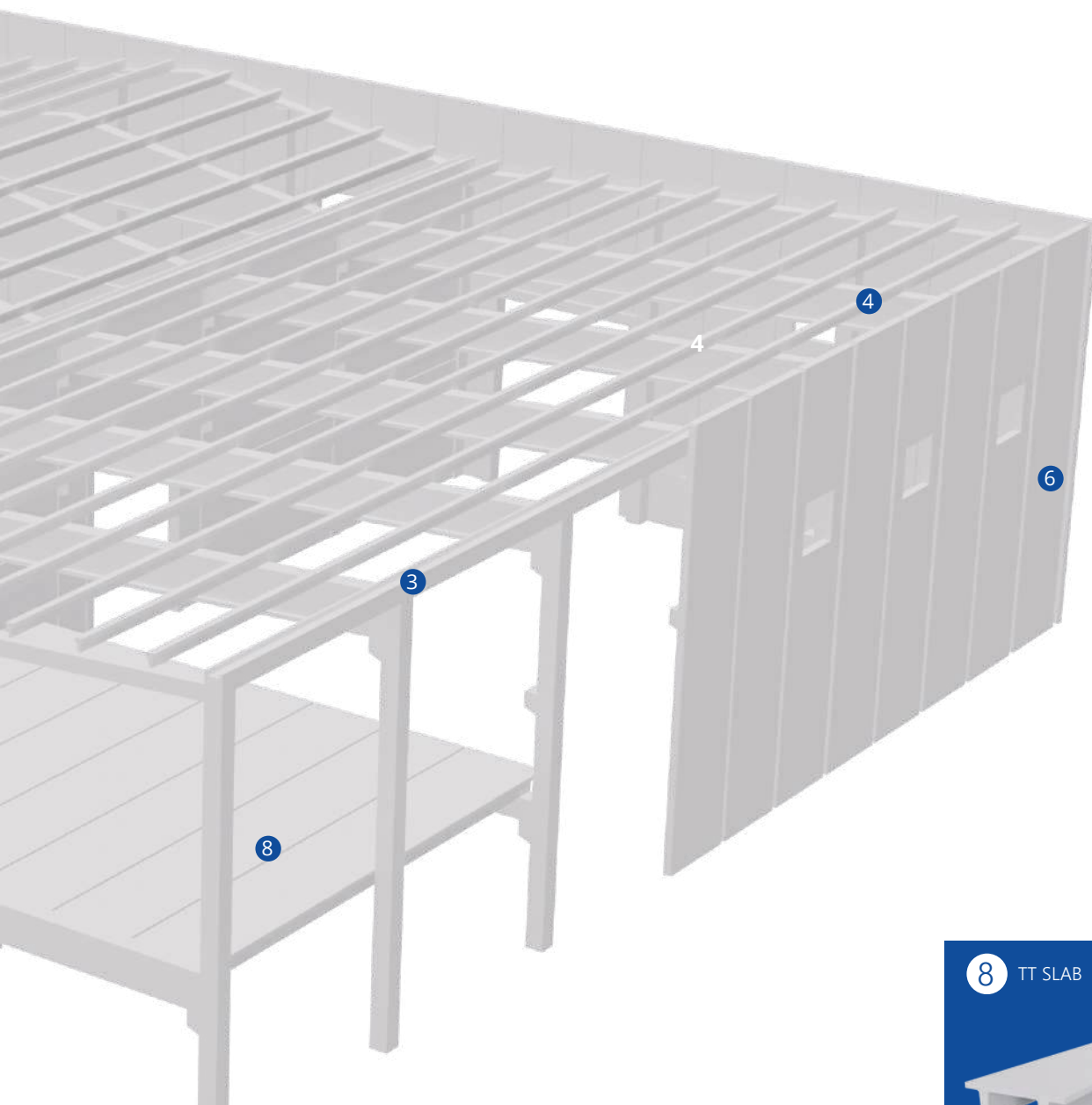


3 H BEAM FOR CHANNELS



4 I BEAM





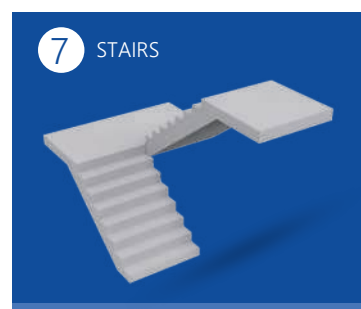
5 RTL BEAM



6 ENCLOSURE PANEL



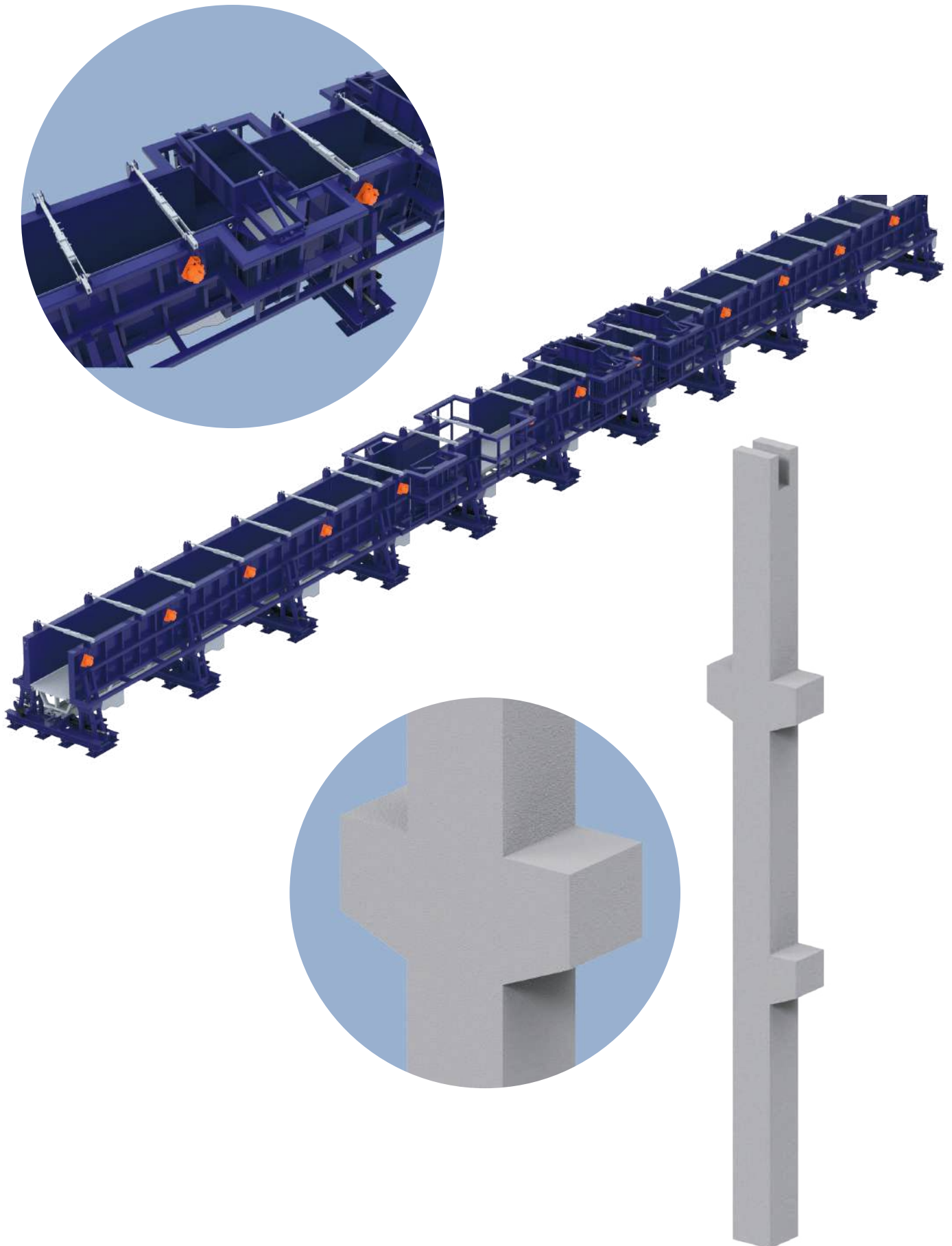
8 TT SLAB



7 STAIRS



Multiposition Versatile Mould for Column

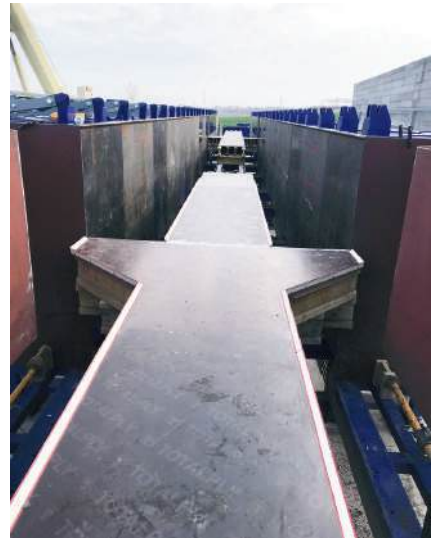
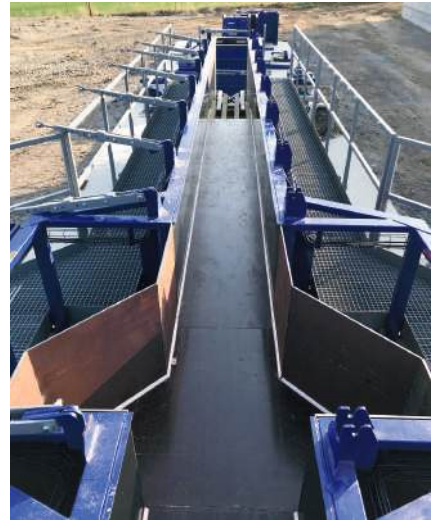


Multiposition Versatile Mould for Column

MOLDTECH manufactures different types of moulds for reinforced concrete columns, adapting to the specifications of each project and/or each client: Single or double moulds, with manual or hydraulic opening. In addition, they can be configured with a fixed bottom or with a height-adjustable bottom.

This multiposition versatile mould for column allows to manufacture columns with corbels on all four faces and placed in any height position.

The mould opening operation is hydraulic.



Columns with Corbels



Columns with 4 Corbels



Single Mould for Column

Single moulds to make only one column.

These moulds can be operated manually with removable or folding sides, and hydraulically to open and close the mould.



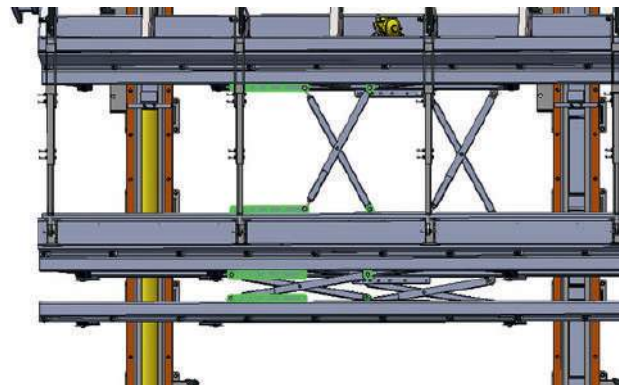
Hydraulic mould for columns



Double Mould for Columns



Double mould for columns produces precast columns with two casting baseplates in parallel with the capability of producing simultaneously two columns of different sections.

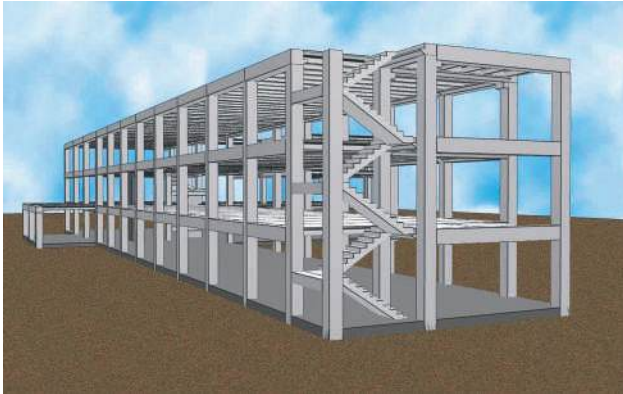




Use of Precast Columns in Industrial Buildings



Use of Precast Columns in Industrial Buildings



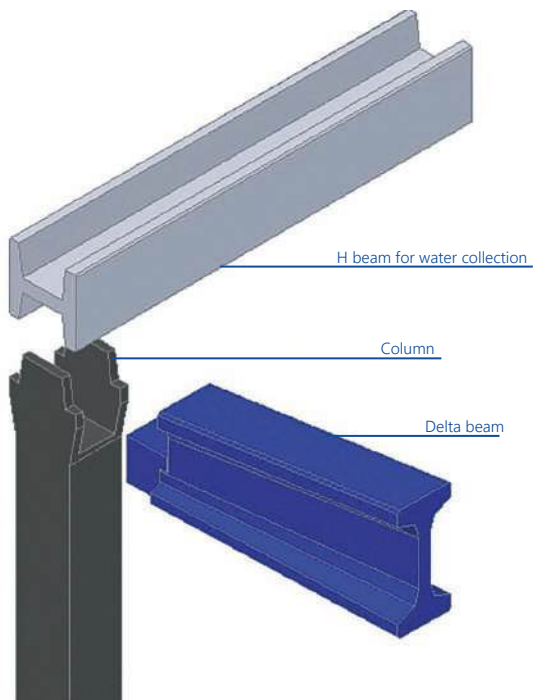
Office building



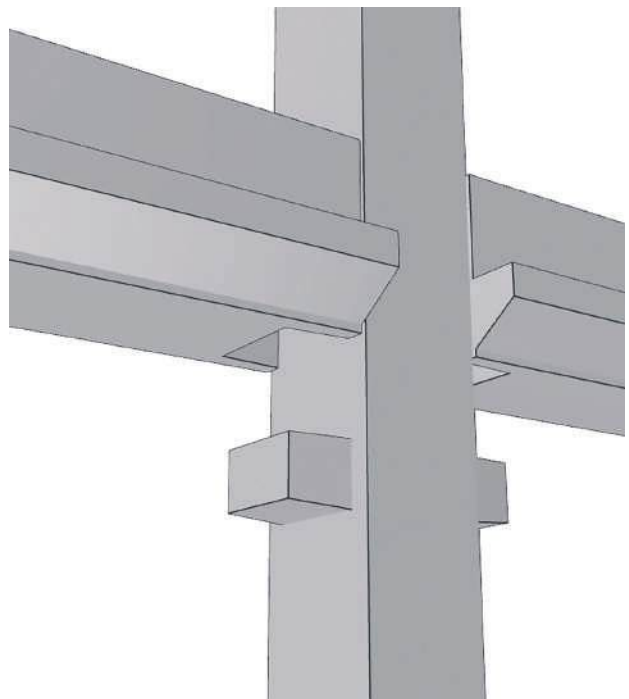
Industrial building with roof beams installed over Delta beam



Industrial building with TT slab on top



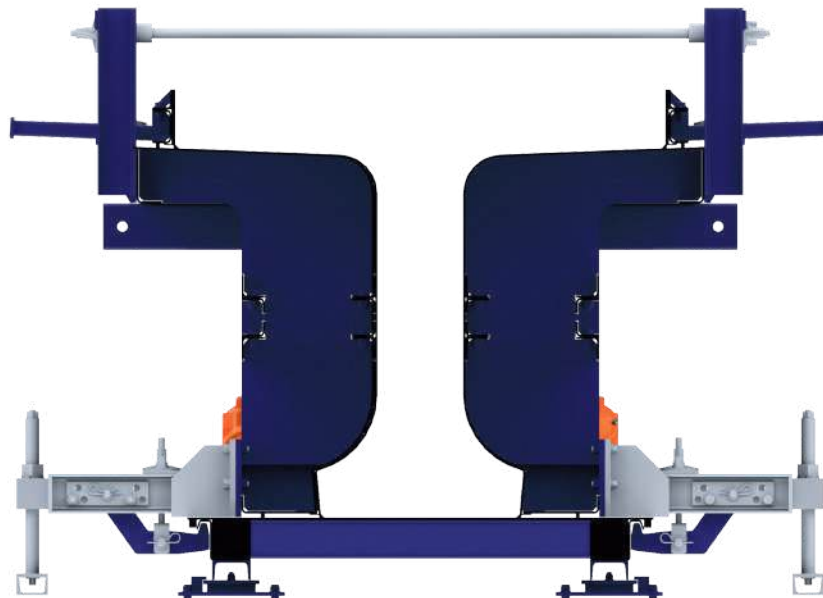
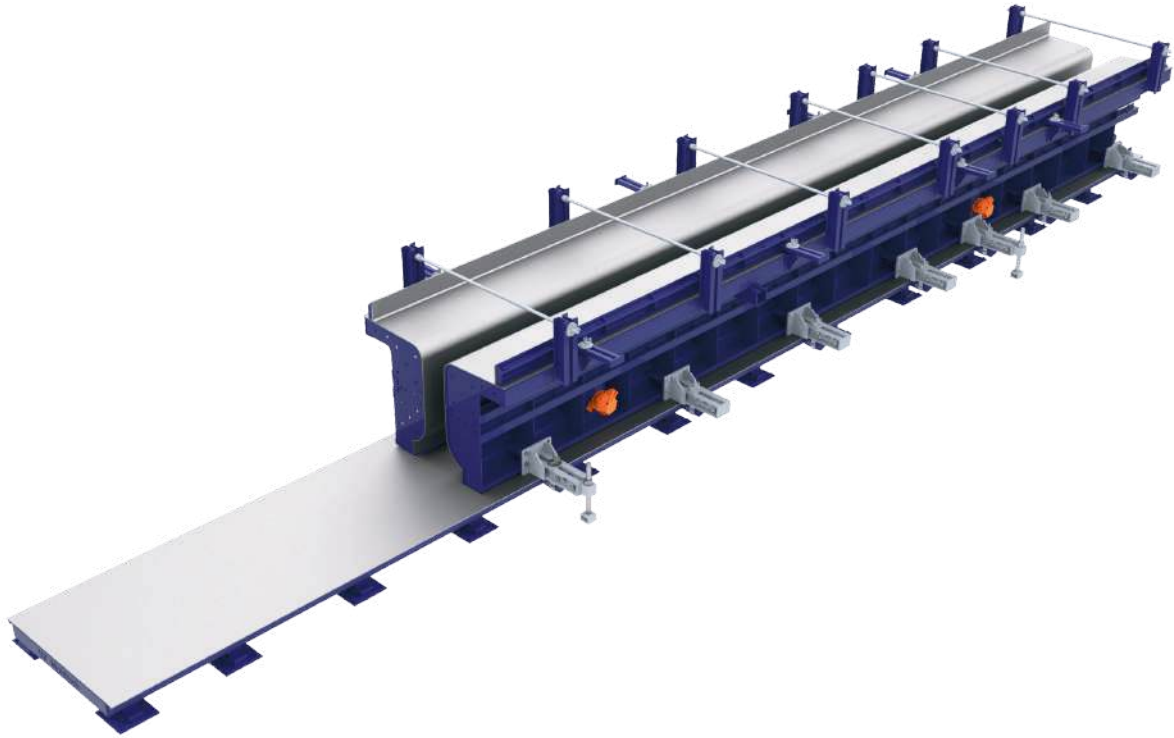
Details of joints under construction



Details of joints between columns and beams



Universal Casting Bed System



Universal Casting Bed System

Prestressed elements are manufactured on casting beds upon mould sides are placed. Using a prestressing system, comprised of stressing heads and hydraulic tensioning equipment, a set of steel strands are pre-tensioned in order to manufacture stronger concrete pieces.

Universal casting bed systems are used for the manufacture of any type of prestressed elements for industrial, residential or public works structures. Allows you to adjust the width of the beam without changing the bottom.

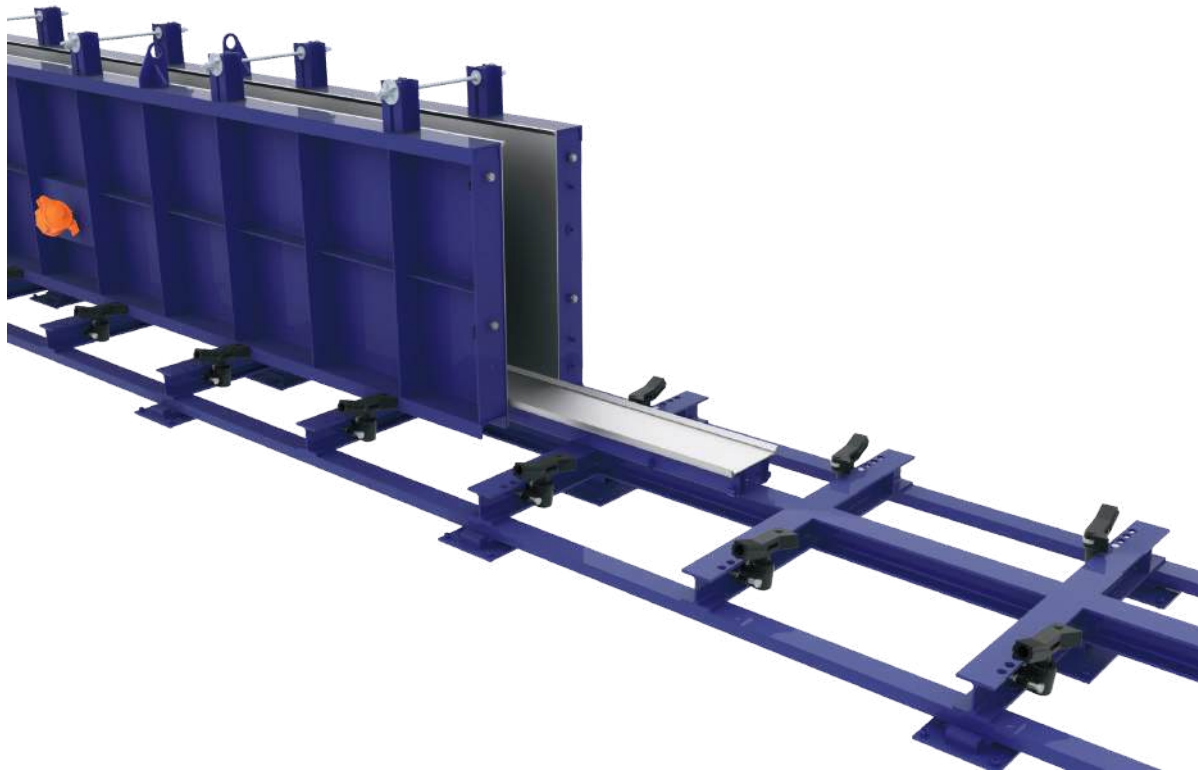


Details of casting bed system





Universal Casting Bed System with Interchangeable Bottom



Universal Casting Bed System with Interchangeable Bottom



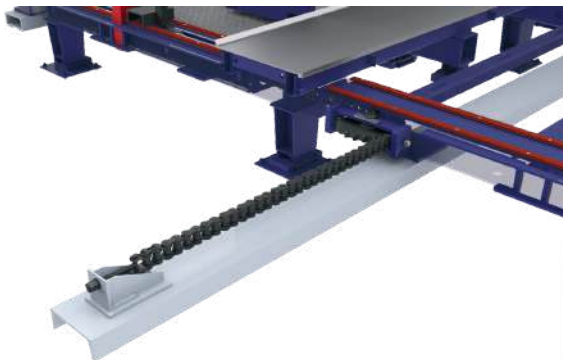
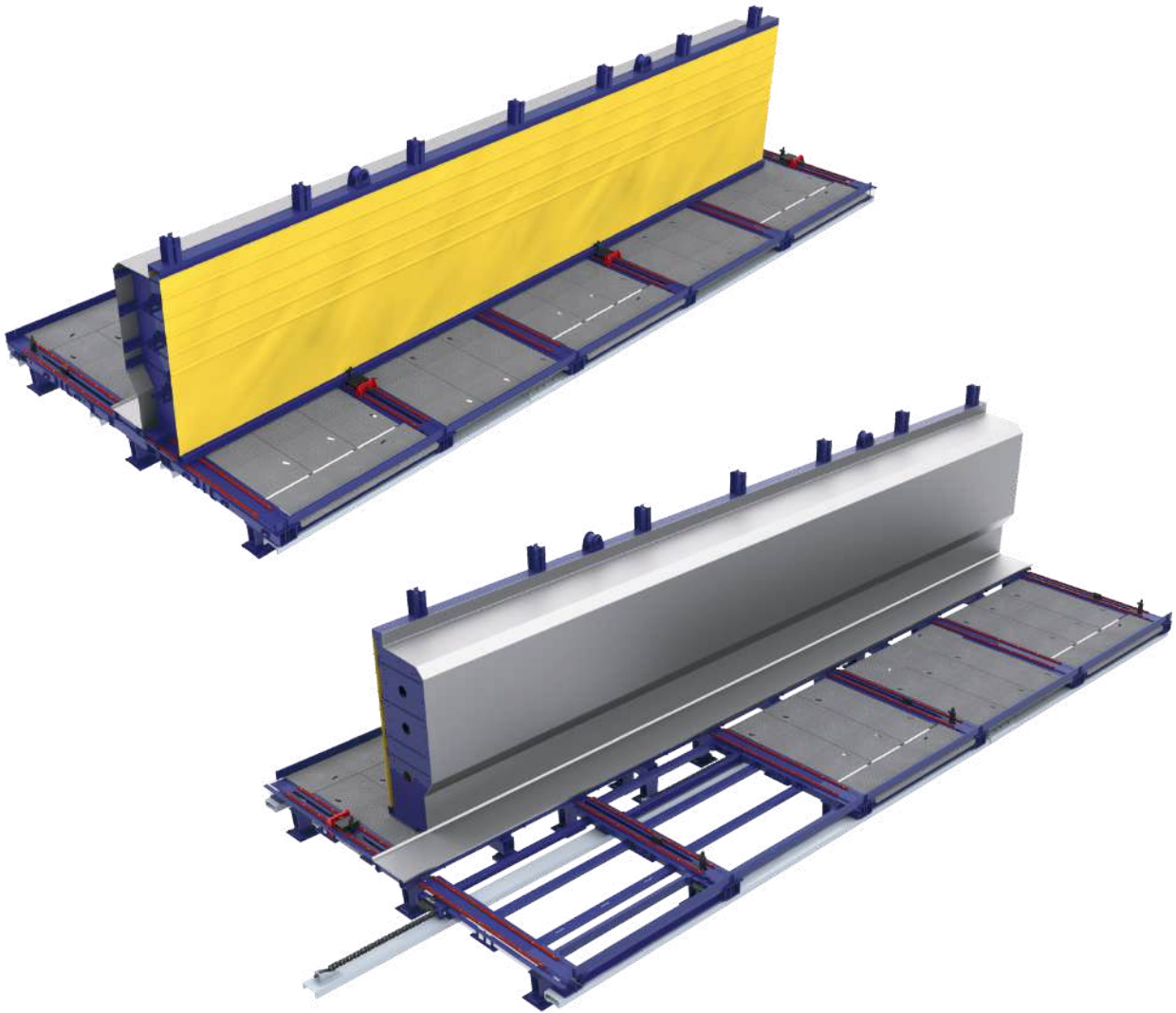
The interchangeable bottom is particularly useful when there is little variation in cross-sections of the beams to be produced. The system allows the sides of the mould to be pressed against the bottom by using mechanical locks which are very easy and quick in use.





Hydraulic Casting Beds

Moldtech has reinvented beam production with its hydraulic casting bed system. This advanced system enables fast and efficient production of beams through innovative solutions.

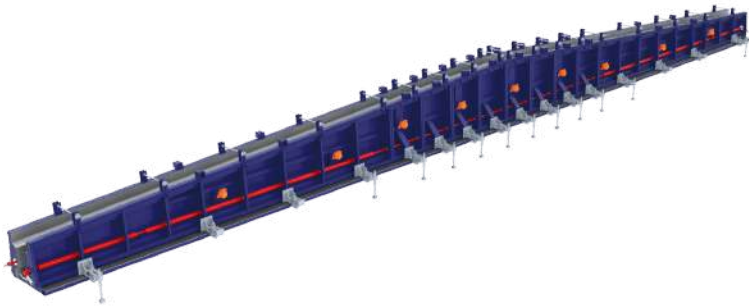


Hydraulic Casting Beds

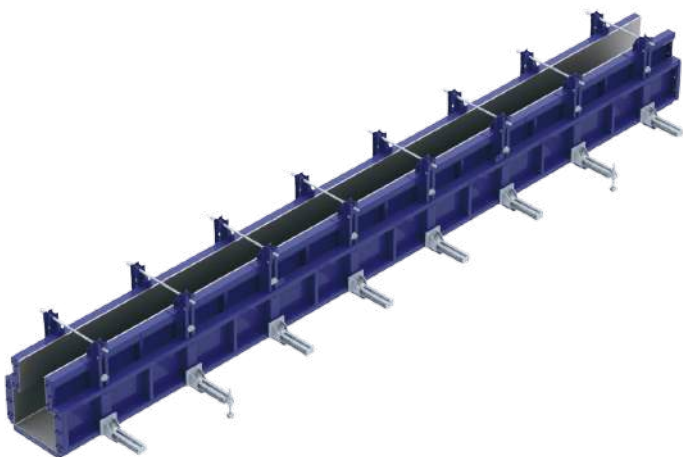




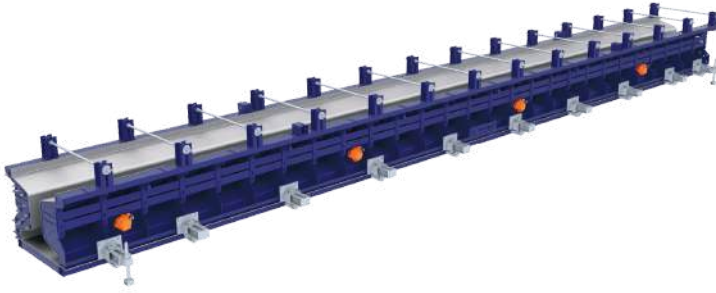
Mould sides for Delta Beam



Mould sides for RTL Beam



Mould sides for I Beam

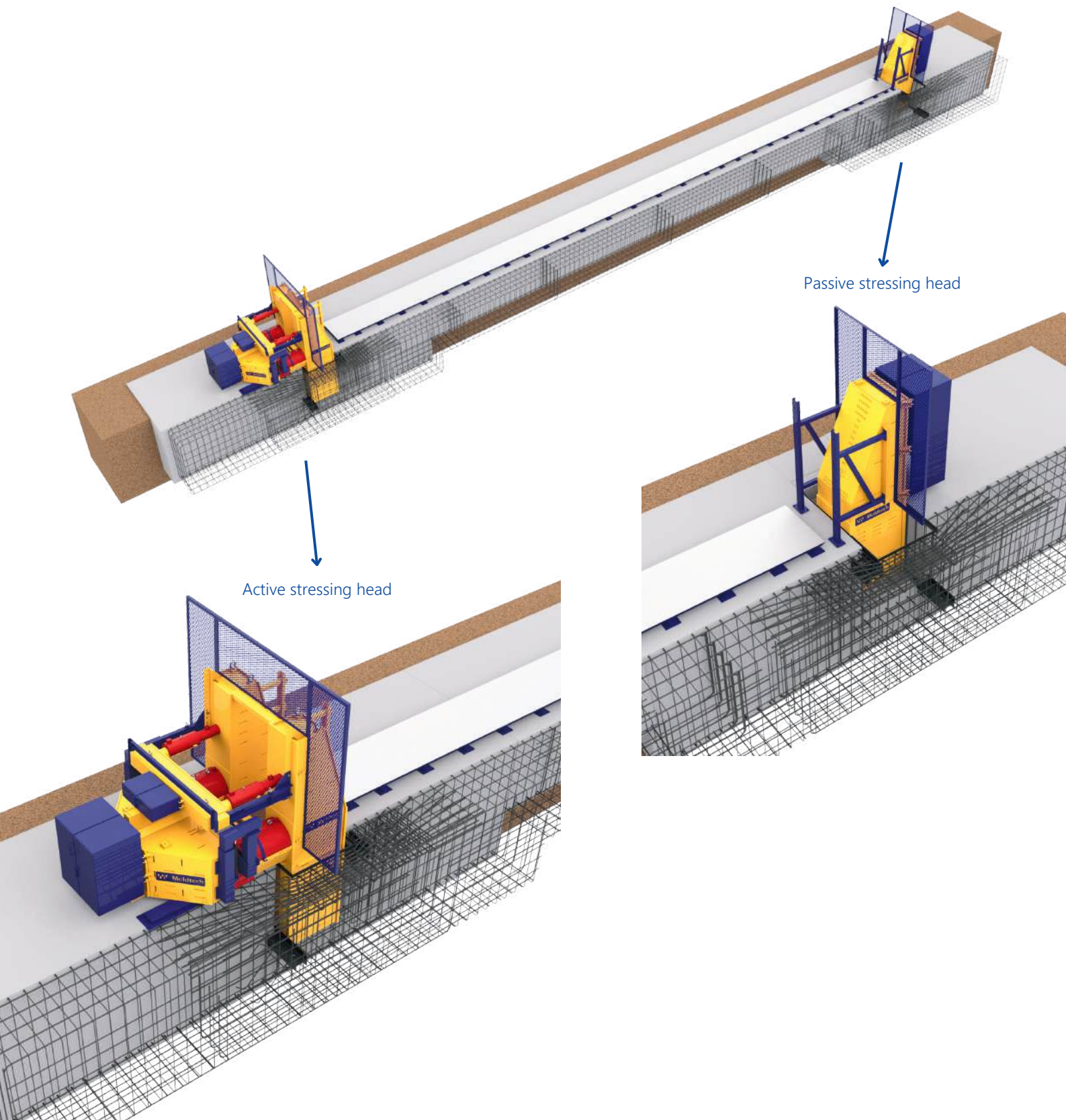


Mould for Ypsilon Roof Girder





Pit Foundations Stressing Heads



Pit Foundations Stressing Heads

The prestressing heads are elements designed and produced by MOLDTECH to offer a reaction force to the amount of pull resulting from the tension of the strands in accordance with the beam section to be produced.

The prestressing heads include a safety enclosure for the strands anchoring wedges in order to protect the operator. The active head includes a set of hydraulic cylinders to perform controlled detensioning operation.



Active head.



Active stressing head.



Lower and upper drill matrix with safety system.

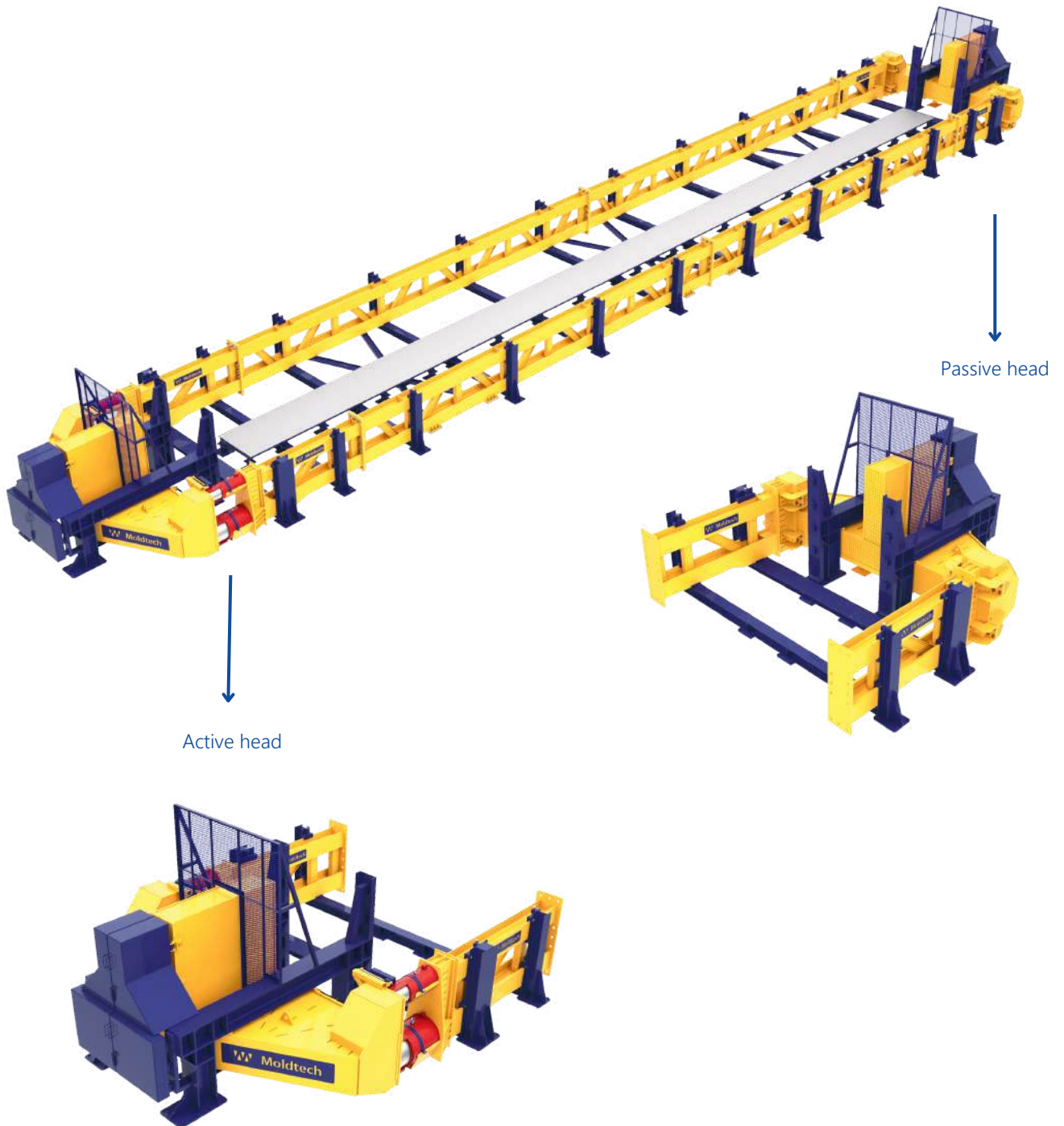


Active stressing head.





Stressing Heads with Self-reacting Steel Structure



Stressing Heads with Self-reacting Steel Structure

Self-reacting system designed to transfer the stressing force to the reacting columns in order to simplify civil works necessary for its installation.





Stressing Heads with Self-reacting Steel Structure



Self-reacting Mould for TT Slabs

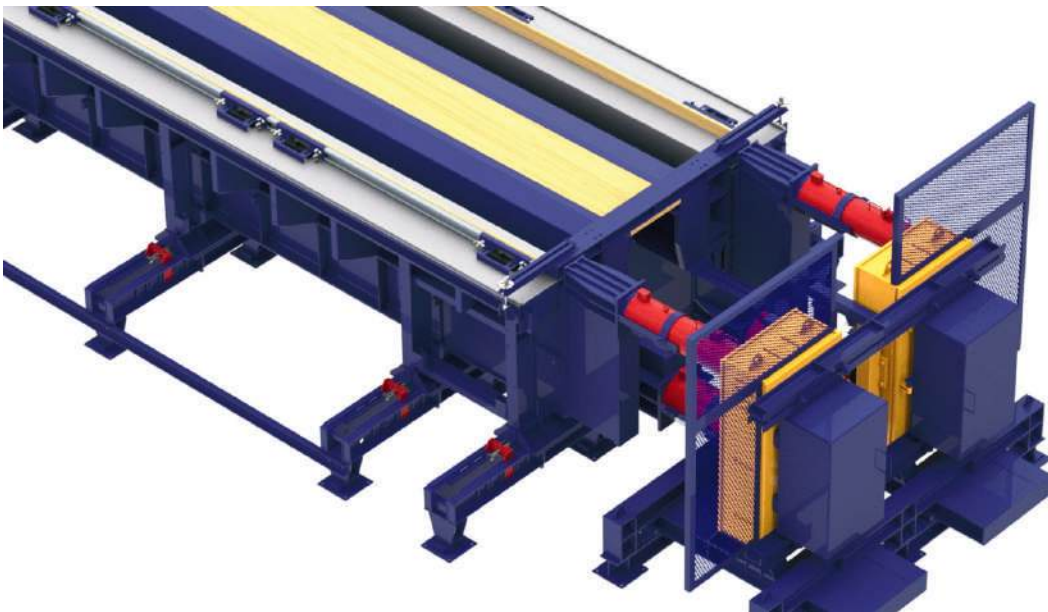




Production process for TT slabs



Self-reacting TT mould for roofs or pre-slabs of industrial and commercial buildings, hospital or parking.



Mould with adjustable rib spacing.



Self-reacting Mould for TT Slabs

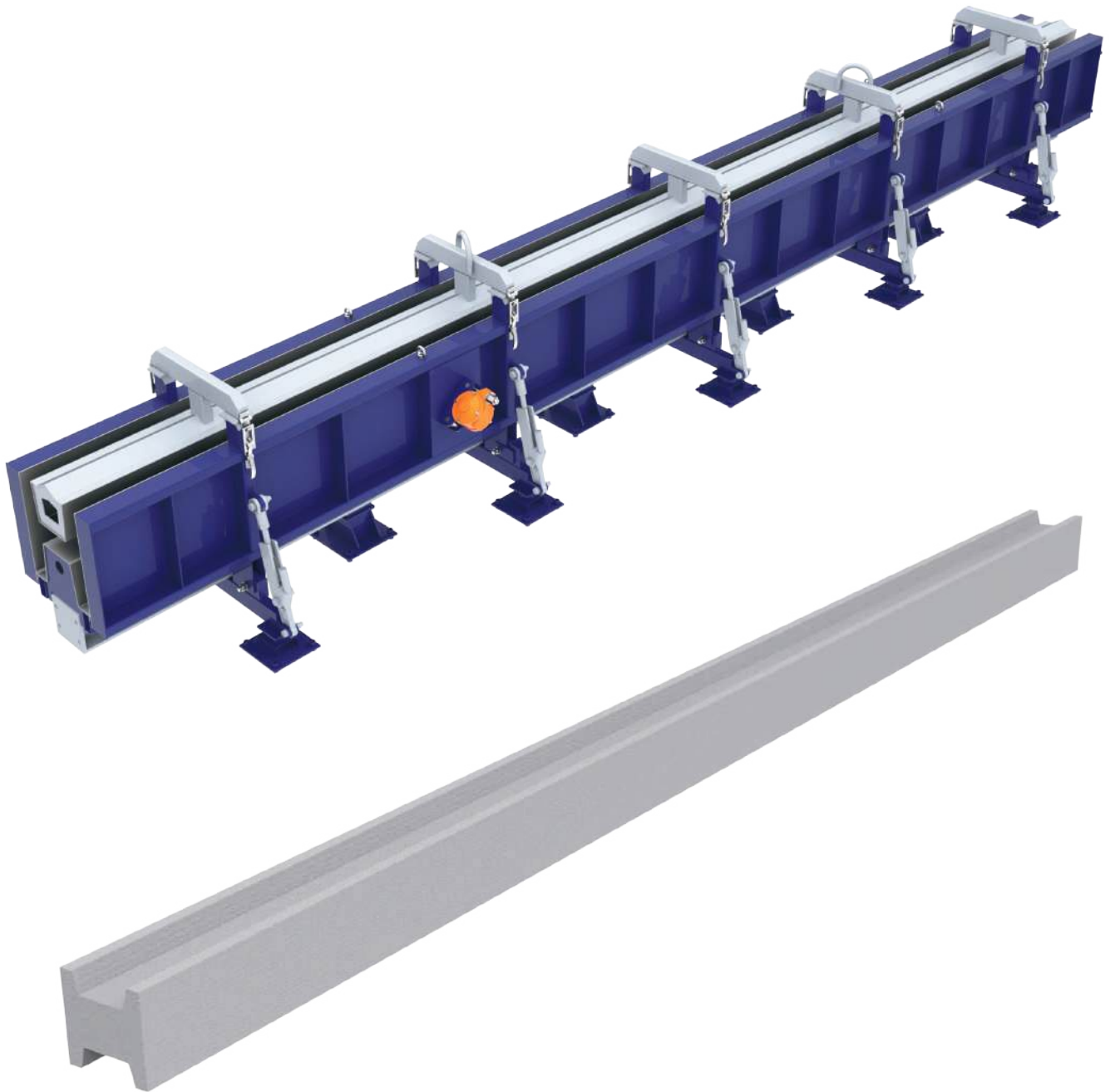


Mould with hydraulic opening and hydraulic rib height adjustment.

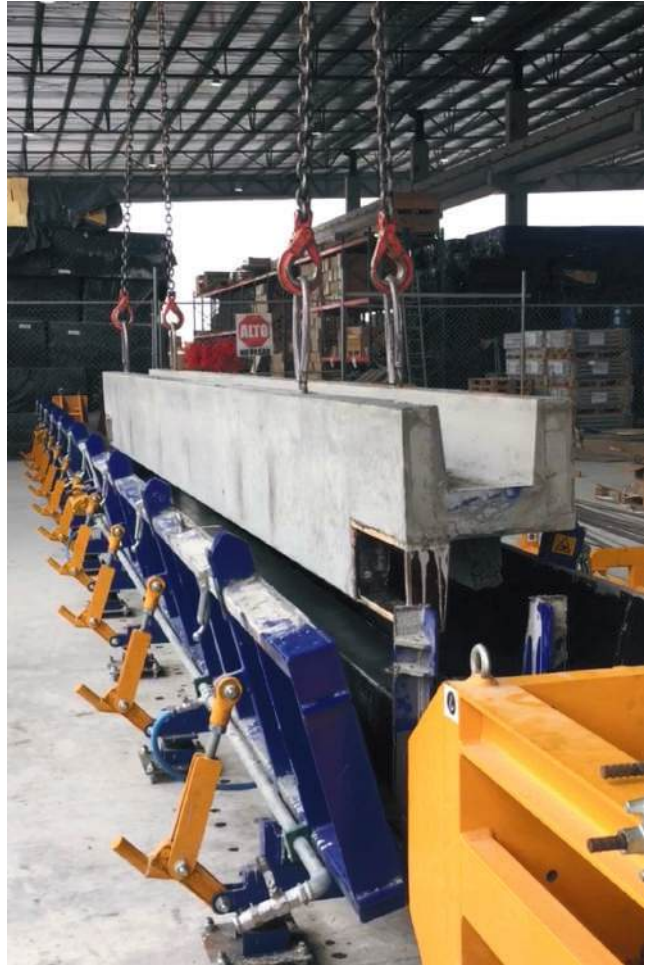




Mould for H Beam for Collection of Rain Water



Mould for H Beam for Collection of Rain Water



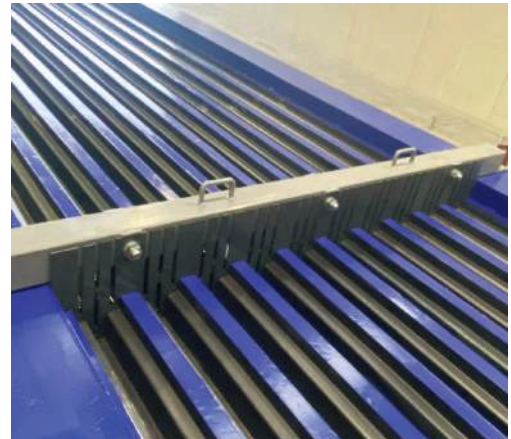


Roof Beam



Self-reacting mould for prestressed joist beams

This mould features stressing heads and a hydraulic system to safely carry out the strands detensioning operation.

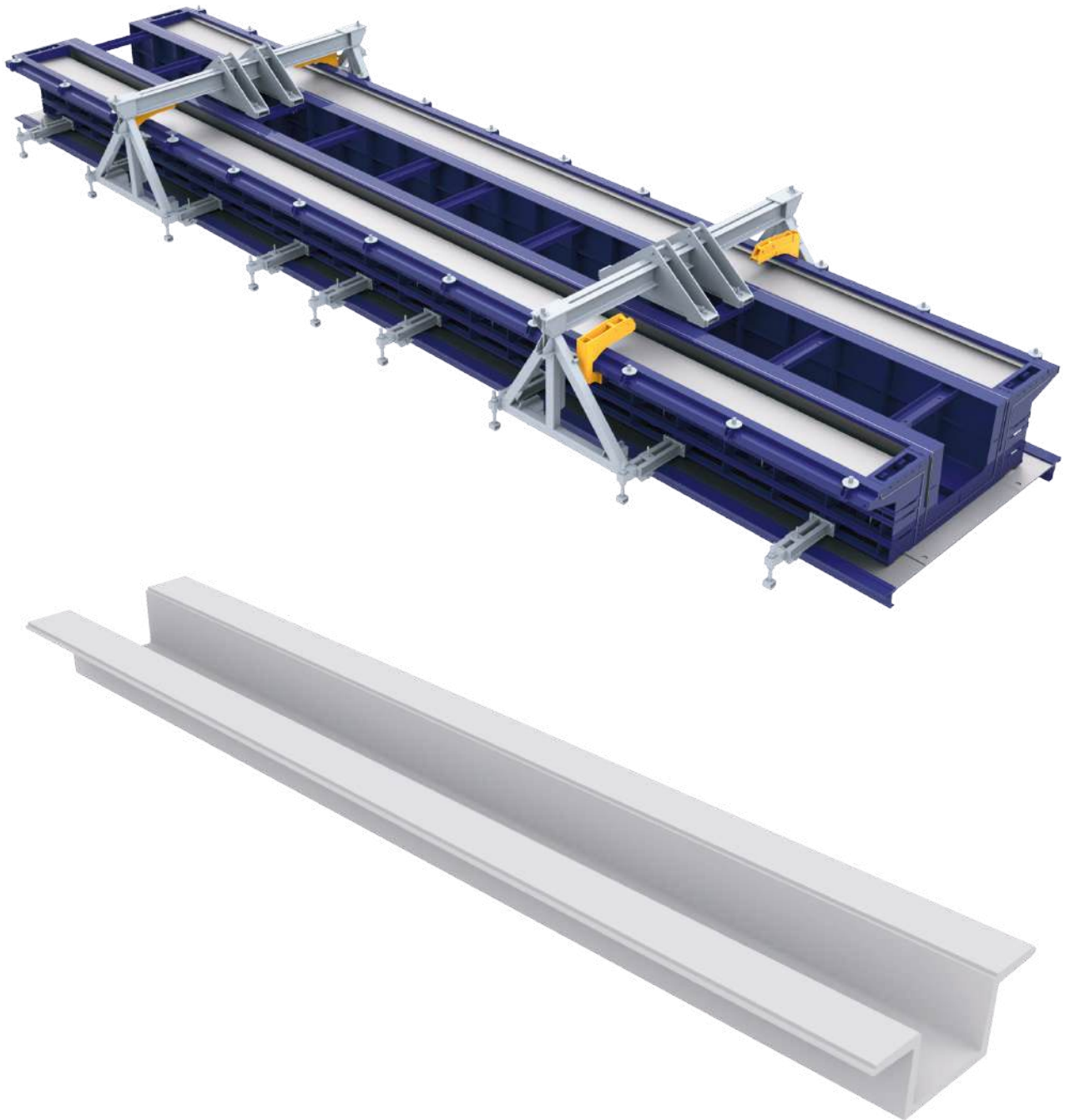


Mould for Reinforced Beams





Mould Sides for U-shaped Beams and Slabs



Mould Sides for U-shaped Beams and Slabs

Mould sides and upper mould for 'omega' or "U" shaped elements, such as roof slabs or even 'omega' beams for viaducts. This equipment is easily integrable with facilities for the production of hollow core slabs.





Tilting Table

Tilting tables manufacture precast concrete panels which are used for the closing of industrial and public buildings.

These tables are manufactured according to client's specifications and can reach lengths of up to 60/70 meters allowing the production of panels up to 4,5 meters. Normally feature two detachable or collapsible sides for manufacturing panels with a fixed height.



Tilting Table



Tilting tables with upper regulation





Details of Industrial Panels with Tilting Table

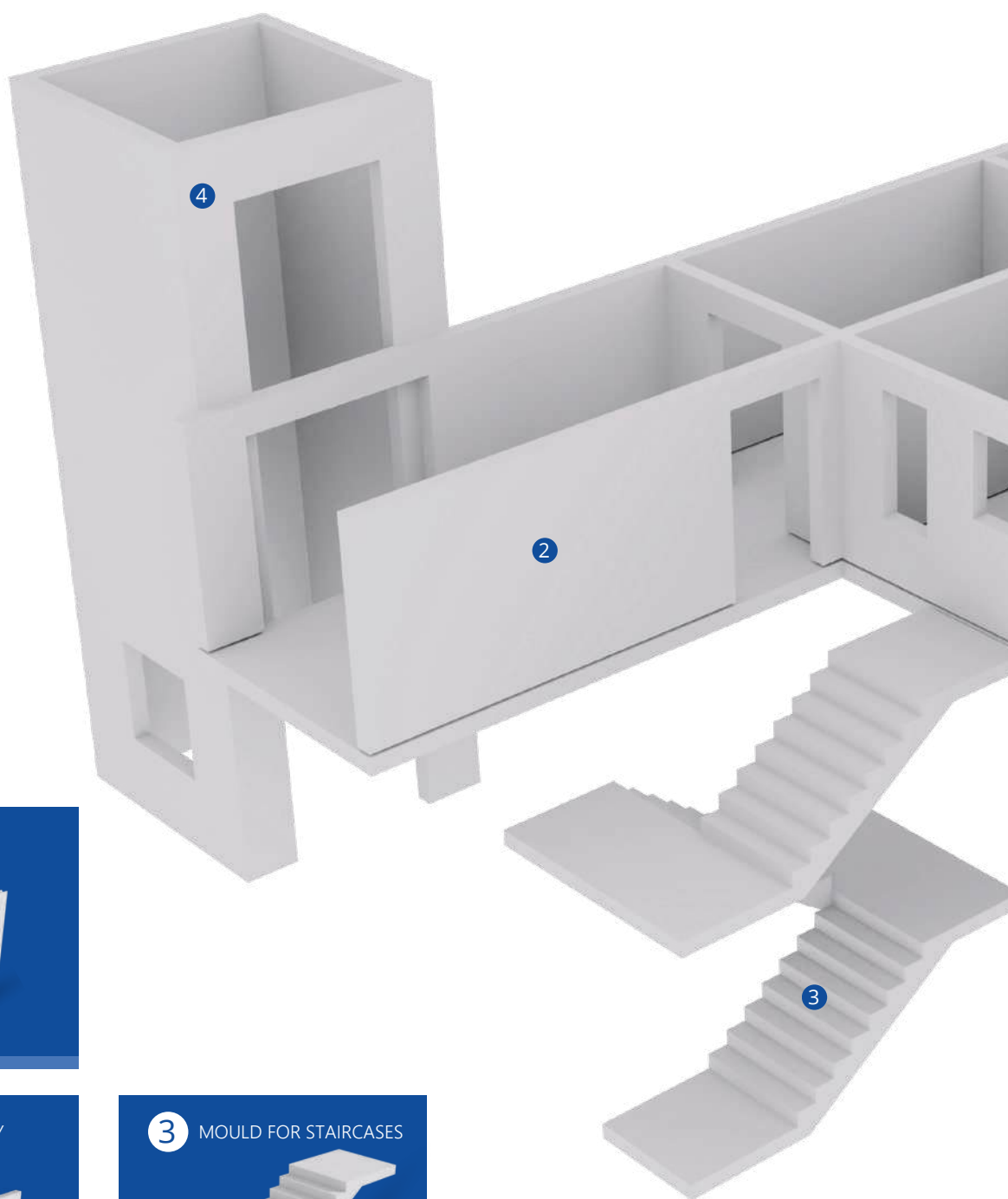


Details of Industrial Buildings

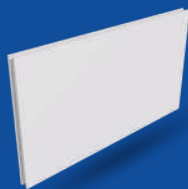


RESIDENTIAL

THIS SECTION DESCRIBES OUR KEY EQUIPMENT & MOULDS FOR THE PRODUCTION OF PRECAST CONCRETE ELEMENTS USED IN RESIDENTIAL BUILDINGS.



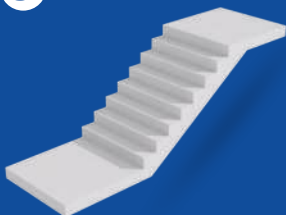
1 EQUIPMENT FOR
DOUBLE WALLS

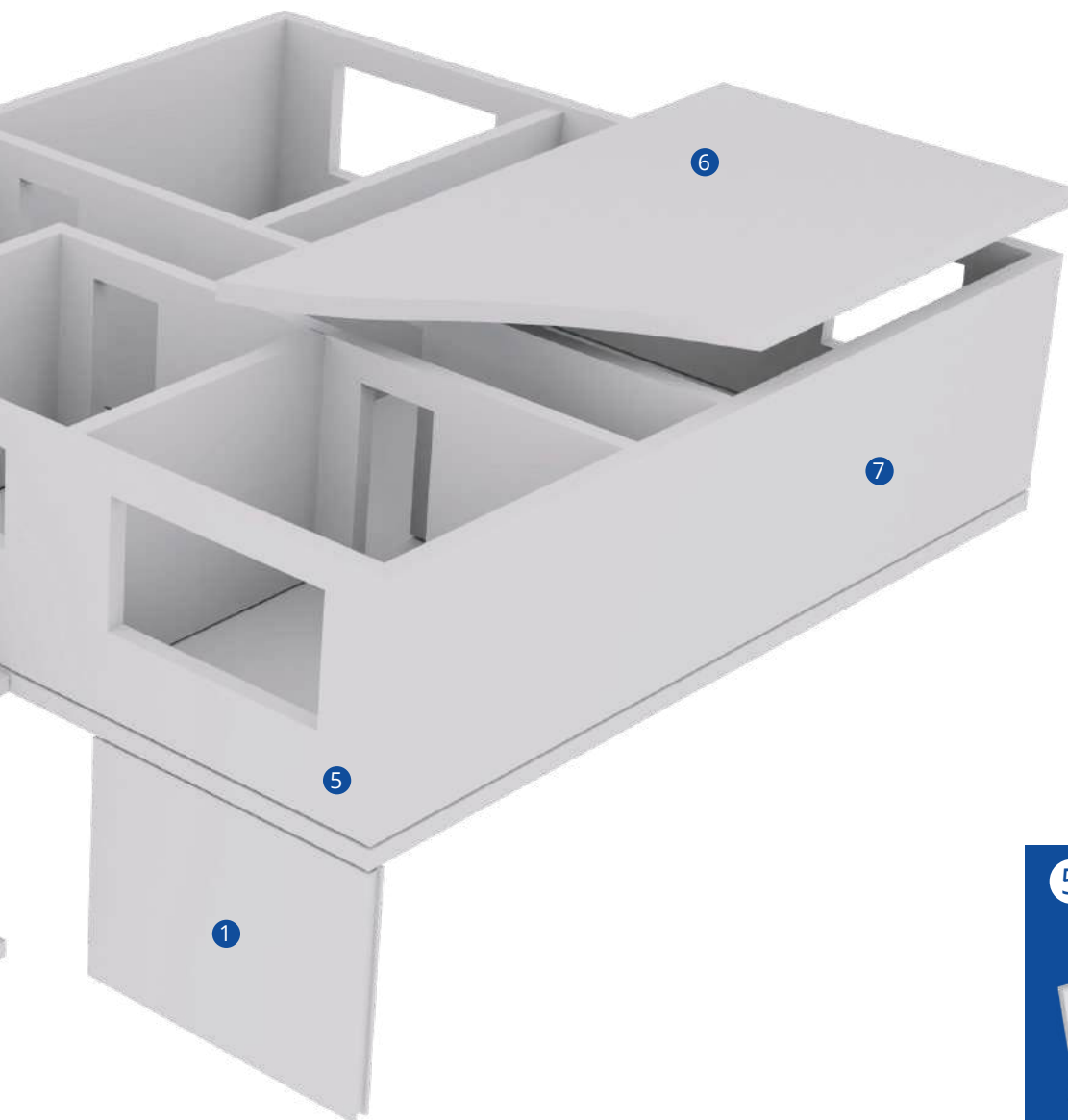


2 VERTICAL BATTERY
MOULD AND
INTERIOR PANEL

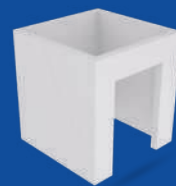


3 MOULD FOR STAIRCASES

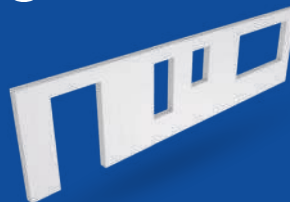




4 MOULD AND 3D ELEMENT FOR ELEVATOR SHAFT



5 TILTING TABLE AND PANEL



6 PRESTRESSED WIDE SLABS INSTALLATION



7 DOUBLE BOOK MOULD

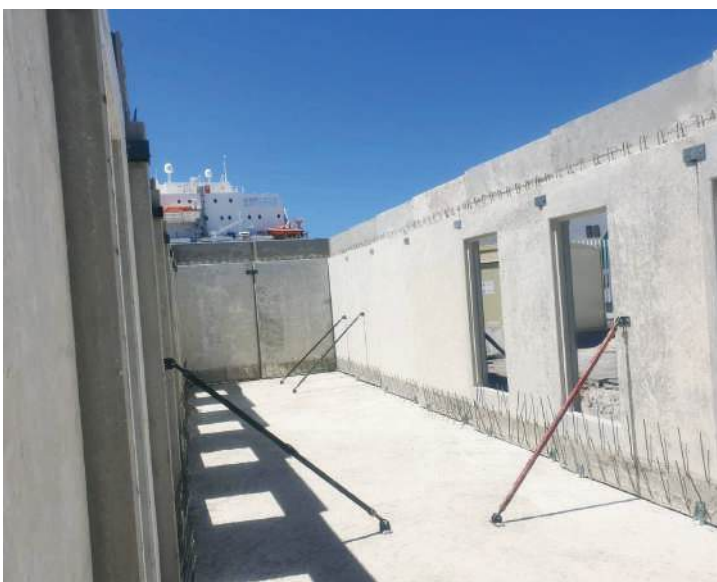




Precast Plants for Residential Projects



Residential Construction Projects with Precast Elements





Tilting Table



Moldtech tilting tables are designed to produce prefabricated concrete panels in various thicknesses for residential, commercial and industrial buildings. Its tilting mechanism allows removing easier the panels in vertical with less time for concrete hardening.

This tilting mechanism consists of a set of telescopic hydraulic cylinders and its number and strength is in accordance to the size and load capacity of the table. The cylinders are activated by a hydraulic unit with electrical control panel which can either command one or more tables, depending on the project.

Tilting tables can incorporate one or more sides depending on the kind of panels to be casted. The sides of the tilting tables may be fixed, collapsible or adjustable in height. In addition, the movement of the collapsible and the adjustable sides can be performed mechanically or hydraulically.



Tilting Table

Panels for residential buildings tend to be casted with a standard size and shape and therefore require a more flexible solution.

The sides incorporated to the tilting tables are usually complemented by flexible shuttering systems using magnets. These shuttering systems are also used to form the panels' window and door openings. Moldtech offers a variety of choice in shuttering systems looking for the best solution for each project.

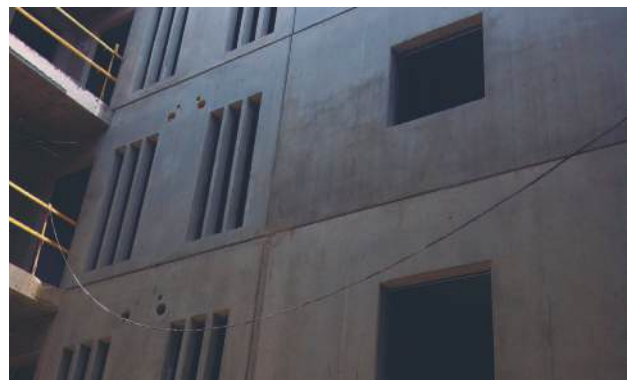
Tilting tables can feature a vibration system consisting of a series of vibrators that can be electric or pneumatic.

Other option to increase the production of the tilting tables is the finned pipe system with isolation canvas for heating. This system leads hot water or steam to accelerate the concrete hardening.

In order to guarantee a smooth and shiny finish of the panel surface, Moldtech can give the casting surface of the tilting table an optimum polish creating a "mirror like" effect.



Detail of insulated residential panel





Fixed Tables for Reinforced and Prestressed Floor Panels and Slabs



Fixed tables specially designed and built to produce concrete floor slabs and half-slabs intended for residential projects.

The reinforced half-slabs for short spans are ideal for use as lost formwork in the construction of floors and ceilings in residential buildings, providing an efficient and resistant solution.

In residential projects, prestressed half-slabs for medium spans are frequently used, combined with lightening elements and insulating materials, which improves both energy efficiency and the structure of the building.





Fixed tables can also feature vibration system and heating system for a better concrete finishing and an accelerated concrete hardening.

MOLDTECH manufactures and supplies fixed tables with or without pre-stressing capacity to allow the precasters to deal with all type of projects based in half-slabs.

The fixed tables are normally equipped with a fixed side and a collapsible. These tables can be manufactured in accordance to the maximum width required by the client and the casting dimensions can be adjusted by using different shuttering options.





Mould for Sandwich Panels



This mould is used for the production of sandwich-type reinforced walls with 2 concrete layers and for instance a layer of insulation material in between. Its design allows the production of panels of different thicknesses. Using panel formwork, it is possible to insert window and door openings.



Turning System for Double Walls

The double wall system designed by Moldtech is equipment specially designed to manufacture double walls, consisting mainly of pallets and a 180° turner for pallets.



Double Book Mould

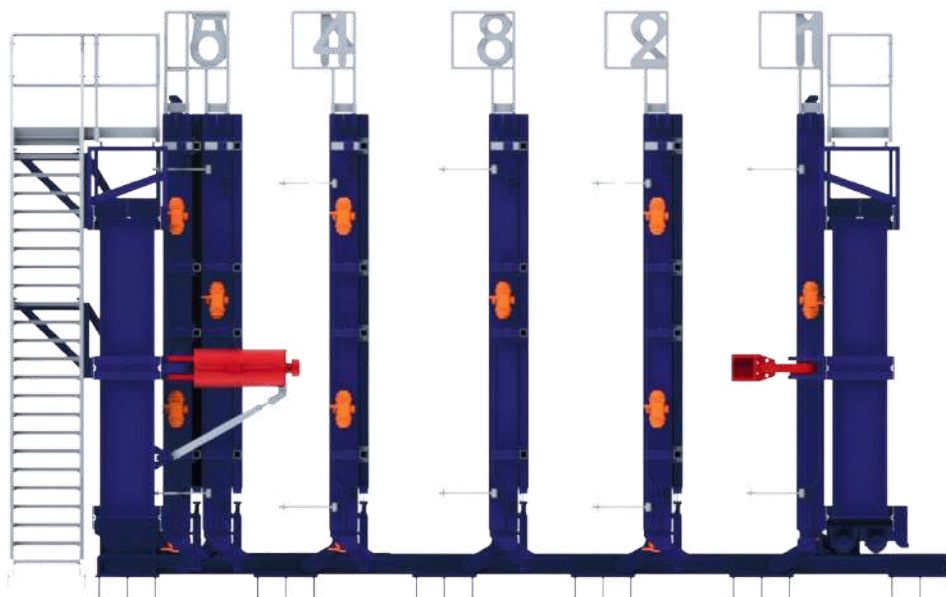
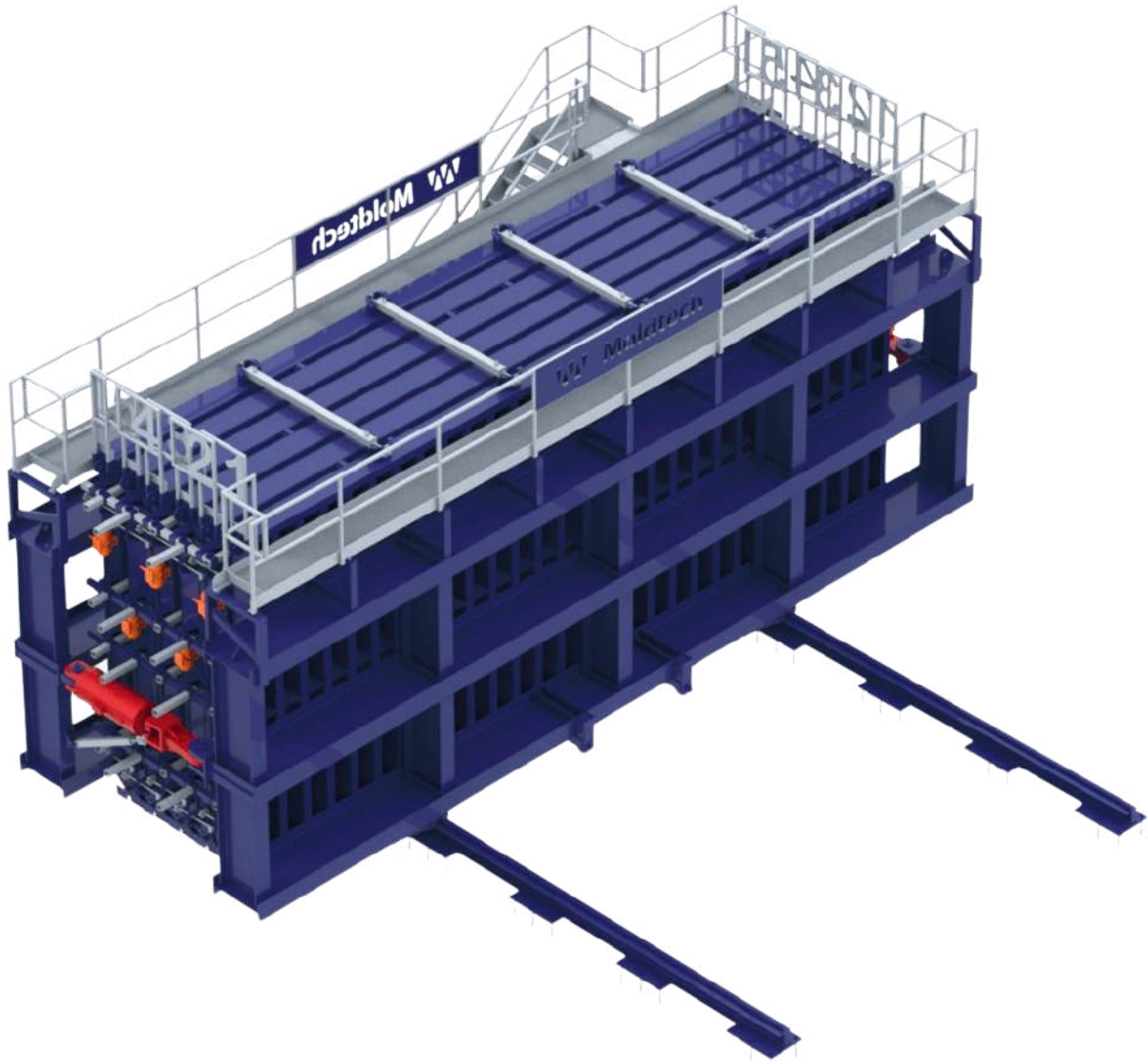
This mould is a hybrid between a tilting table and a battery mould. There are 2 surfaces: one horizontal and one vertical. On the horizontal surface one could cast panels with for instance a first layer of bricks, natural stone, marble etc. and a second layer of reinforced concrete and insulation material.

After casting the horizontal surface, this is tilted forming one piece with the vertical part as if it were a battery mould. The vertical part, in which previously has been placed its own reinforcement, electric circuit cables and boxes etc. is then casted obtaining a smooth finish of the other panel surface.





Battery Mould for Panels



Battery Mould for Panels



This machine is especially useful for making panels that require a fine finish on both sides. The size and number of mould panels can be adjusted to the client's requirements, while the vibration can be electric or pneumatic. Due to its design, it provides high production capacity in a minimum work space.



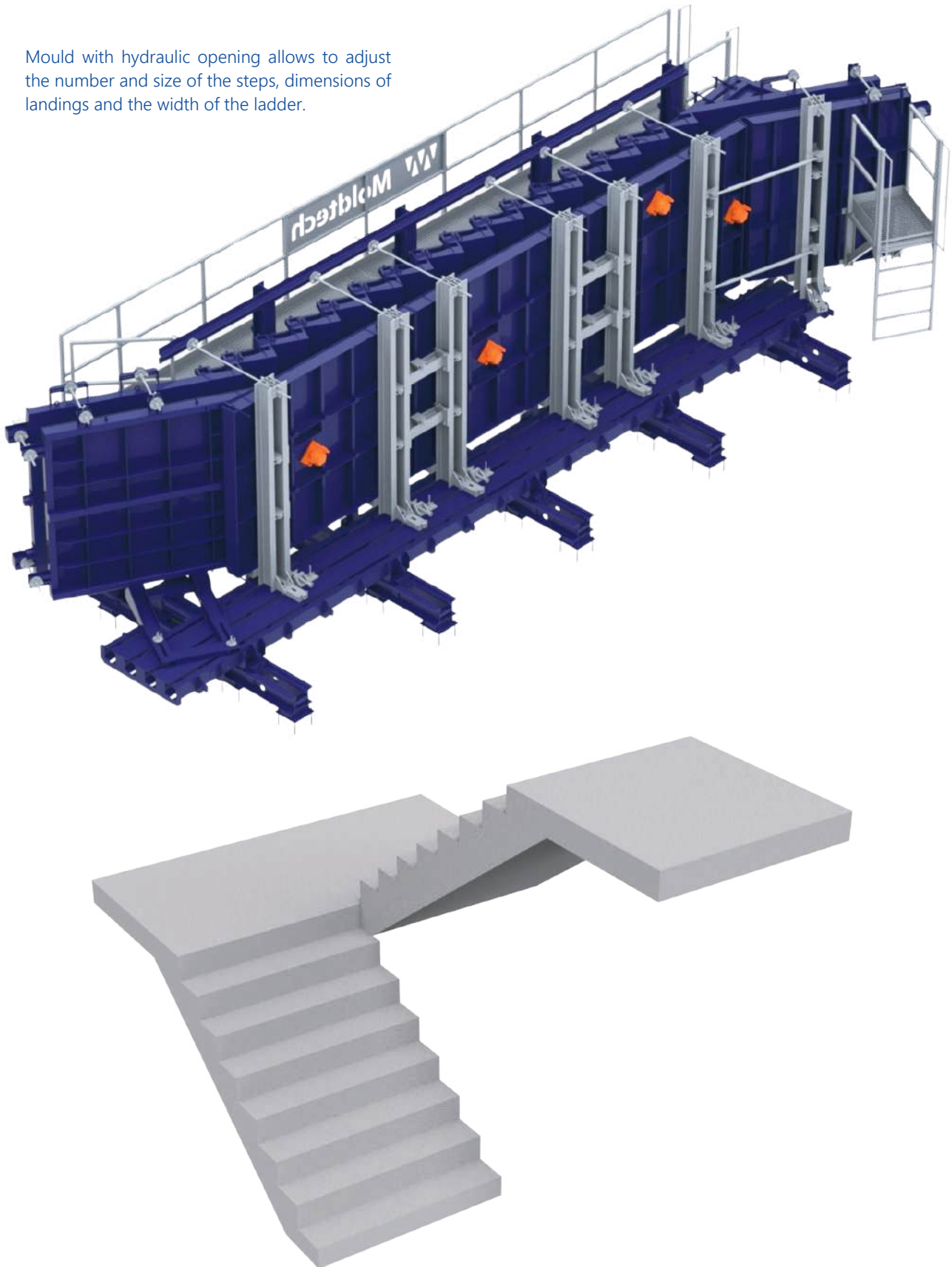


Details of Buildings with Precast Panels



Vertical Mould for Staircases

Mould with hydraulic opening allows to adjust the number and size of the steps, dimensions of landings and the width of the ladder.





Vertical Mould for Staircases



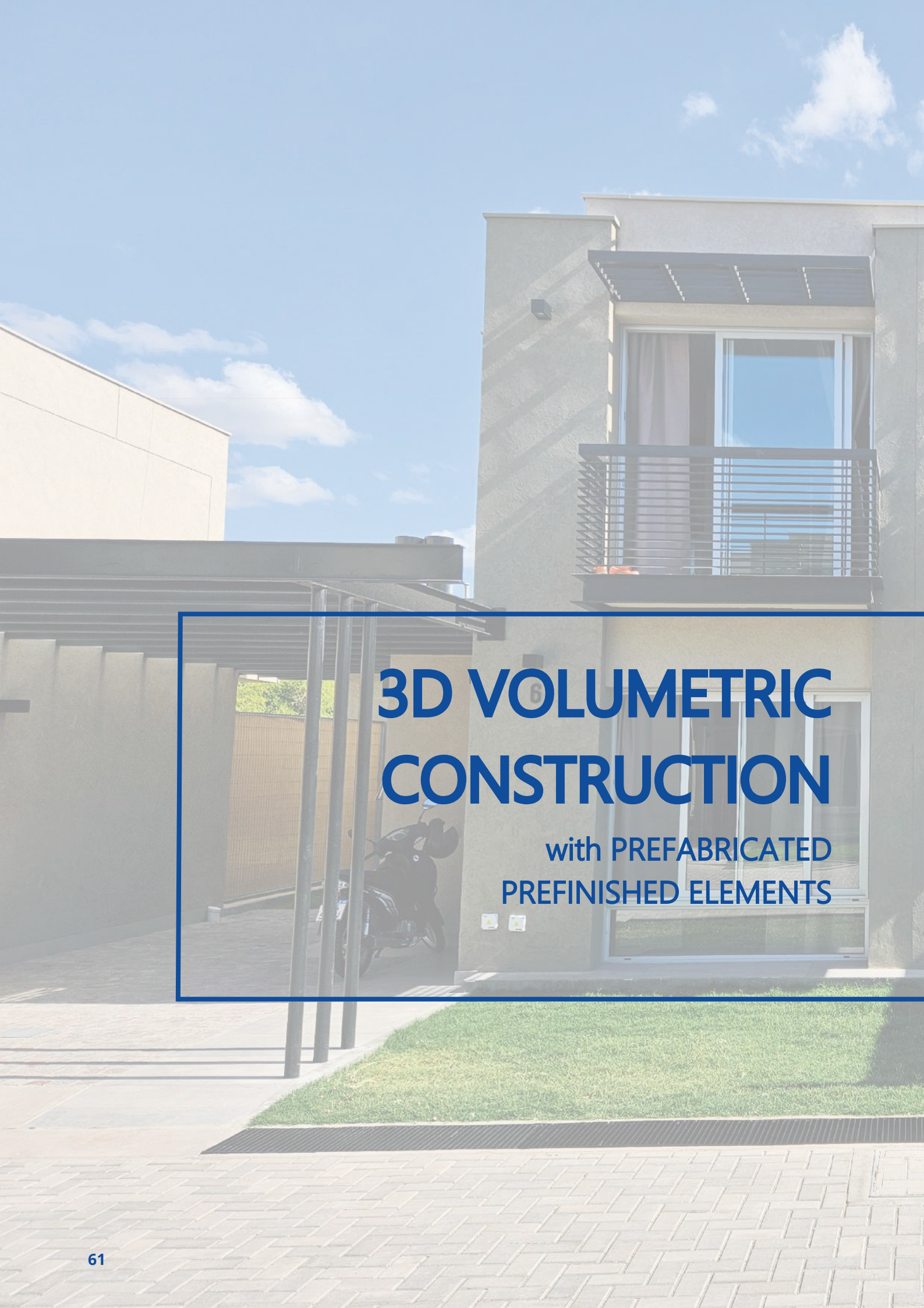
Horizontal Mould for Staircases

Mould for staircase is a double or single mould that allows manufacturing staircase stretches. The characteristics of the mould (tread depth, riser height, number of stairs, landings, weight of staircase) are all in accordance to the precaster's requirements.

The opening/closing movements can be provided for mechanically handling with crane as well as for totally hydraulic activation operated from a hydraulic unit with electrical control panel. The fastening system in the upper part of the mould is based on easy-to-use Dywidag rods.

The mould also can feature external vibration.





3D VOLUMETRIC CONSTRUCTION

with PREFABRICATED
PREFINISHED ELEMENTS





3D Volumetric Construction

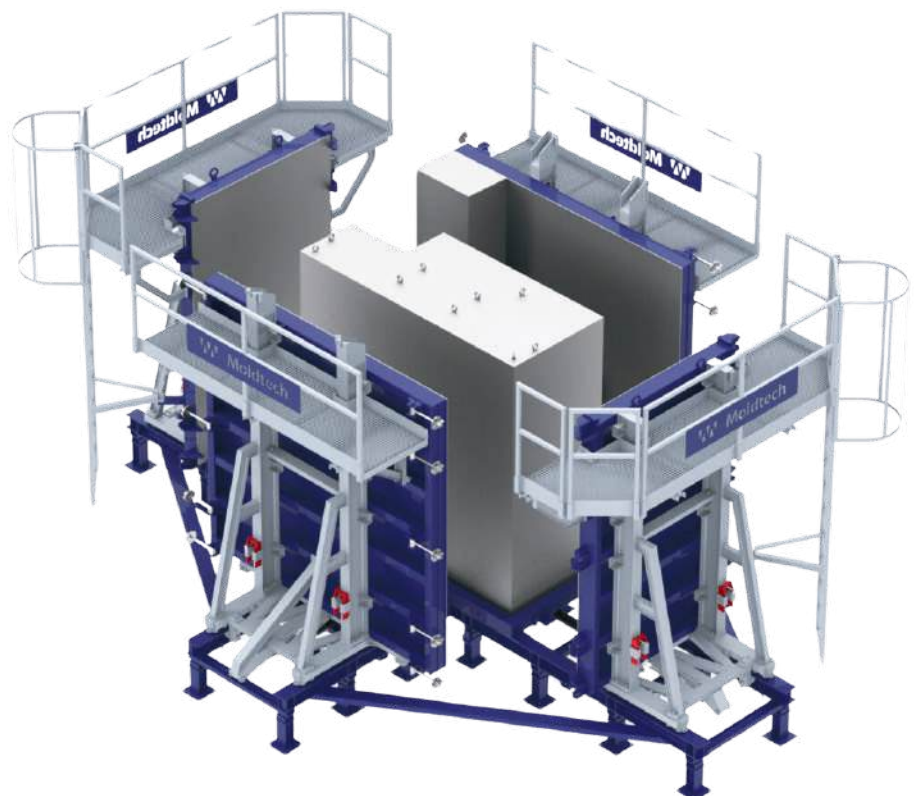
ADVANTAGES:

- Healthier, safer and more sustainable homes, with less revision and maintenance requirements, and with the highest quality and design standards.
- Minimize the ecological footprint and improve the working environment.
- Work activity at site gets reduced and the working or manufacture process at controlled facilities gets increased. This last way of working has two interesting points:- It manages a less environmental aggressive manufacture process, reducing the volume of waste material. Has a positive impact on the working accidents rate, the hours and location of the professionals and the diversity of profiles demanded.
- Elimination or reduction of lost working hours at site due to inclement weather.
- Increase the working efficiency through a clear workflow process.
- Material could be stocked at the factory, near the working position, therefore we could reduce the waiting time and get a higher efficiency.



ADAPTABILITY AND HIGHEST QUALITY GUARANTEES

Prefabricated Bathroom Units (PBU)





Prefabricated Bathroom Units (PBU)

Mould for the manufacture of concrete elements with 3D system: casting the 4 walls and the floor in a single monolithic piece of great structural resistance.

The moulds are fully hydraulic on the outside and they have an innovative retraction system of inner walls for perfect demoulding.

180° turning devices are supplied with the moulds to the correct turning operation of the elements.

Therefore, this mould facilitates both assembly and final installation times.

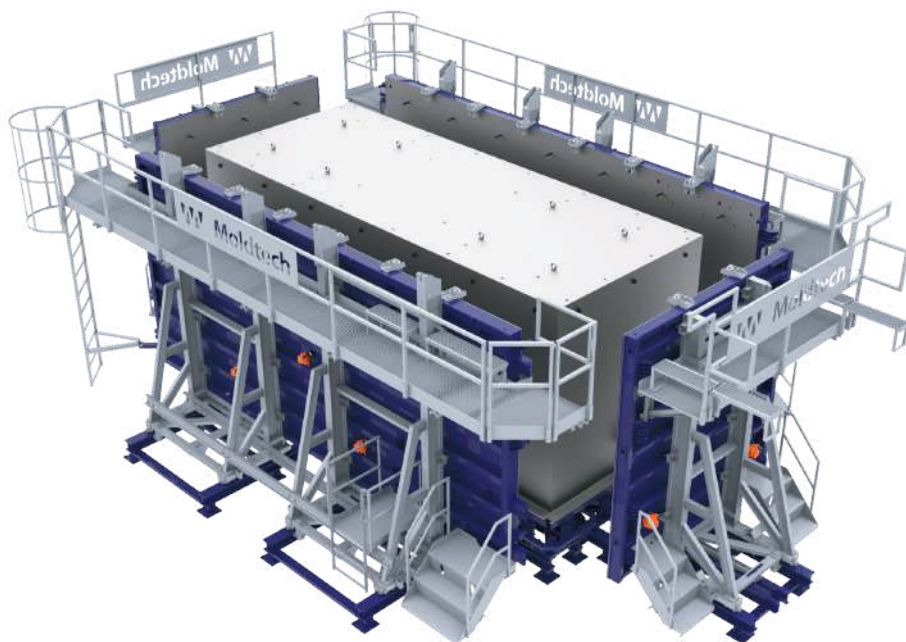
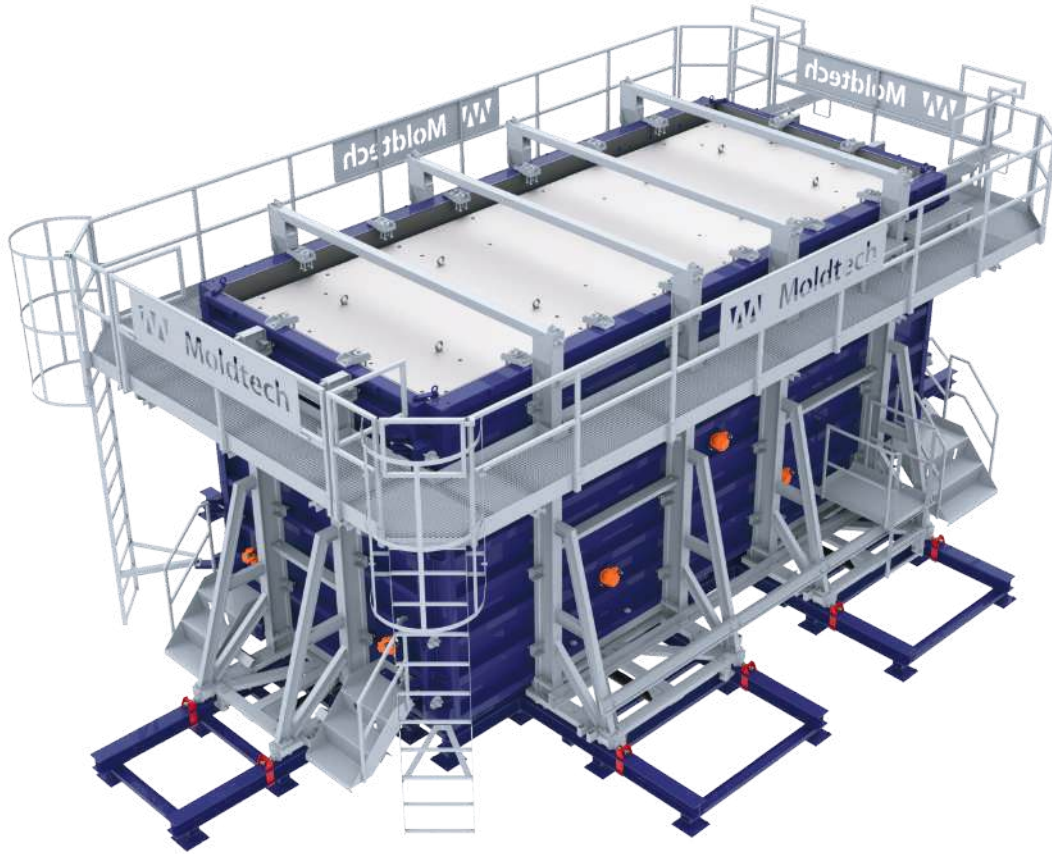


Prefabricated Bathroom Units (PBU)

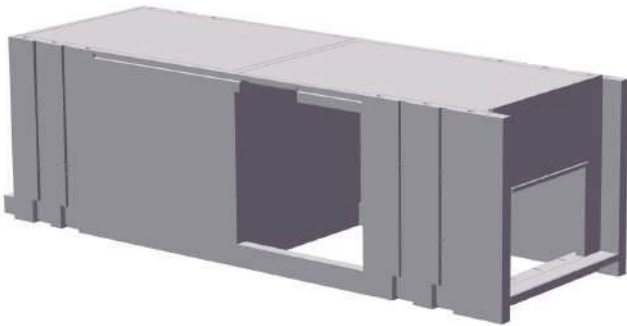




Prefabricated Prefinished Volumetric Elements (PPVC)



Prefabricated Prefinished Volumetric Elements (PPVC)





Prefabricated Prefinished Volumetric Elements (PPVC)



Prefabricated Prefinished Volumetric Elements (PPVC)





Mould for Elevator Shaft



Mould for Elevator Shaft



Modular mould system for manufacturing drycast concrete pieces to build elevator shafts.

The size and thickness of the frame can be adjusted by inserting or removing additional segments.

This allows the mould to produce frames compatible with most elevator manufacturers.

The use of dry-cast concrete enables quick demoulding of the piece, which allows manufacturing a considerable number of pieces per day.





Turner 180° for 3D Elements



Turner 180° for 3D Elements

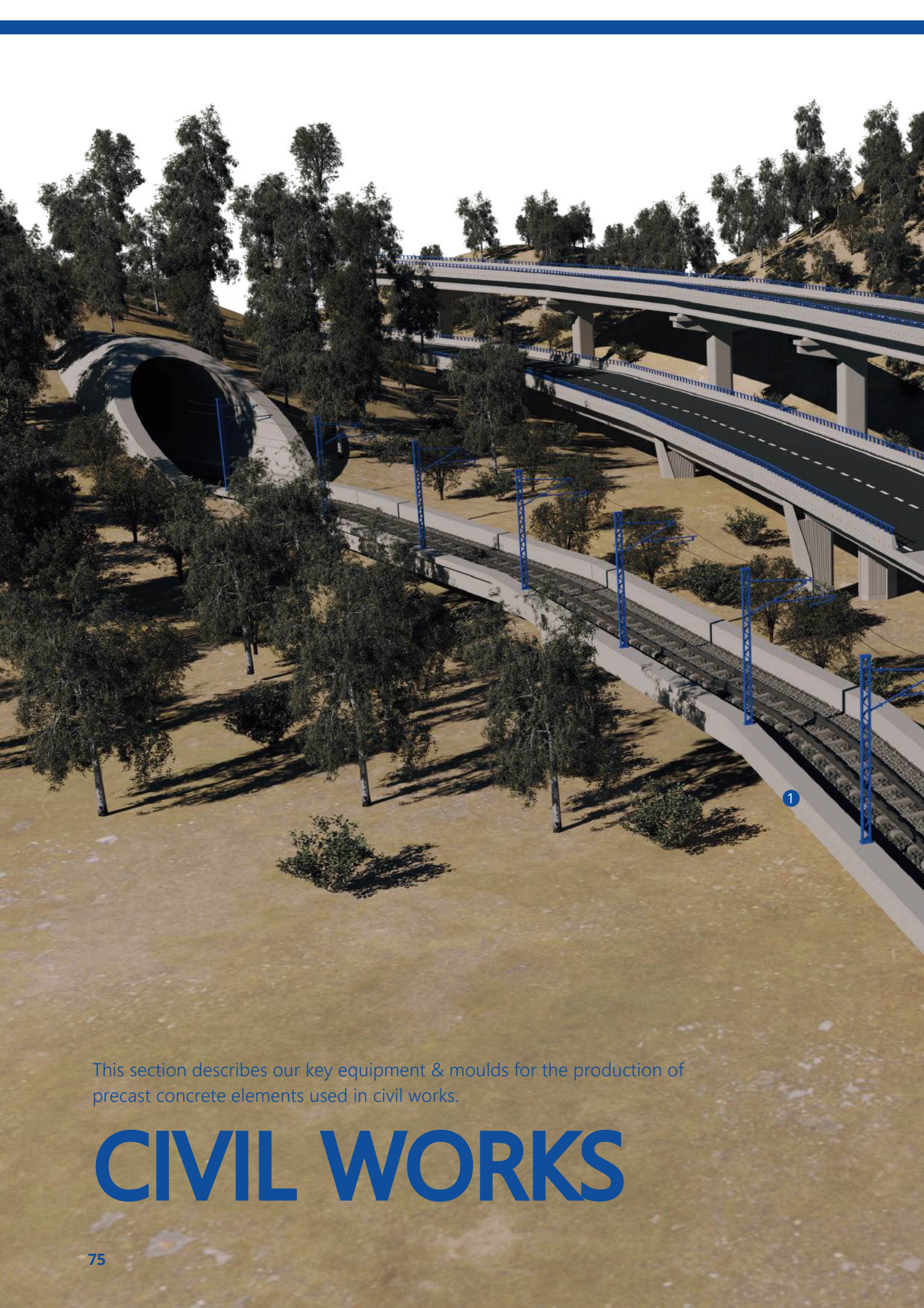


The turning machine is designed to turn 180° 3D precast concrete elements, from the de-moulding position to the final position of placement on site.

It can turn underground containers, transformation poles, and other 3D elements that are reverse casted.

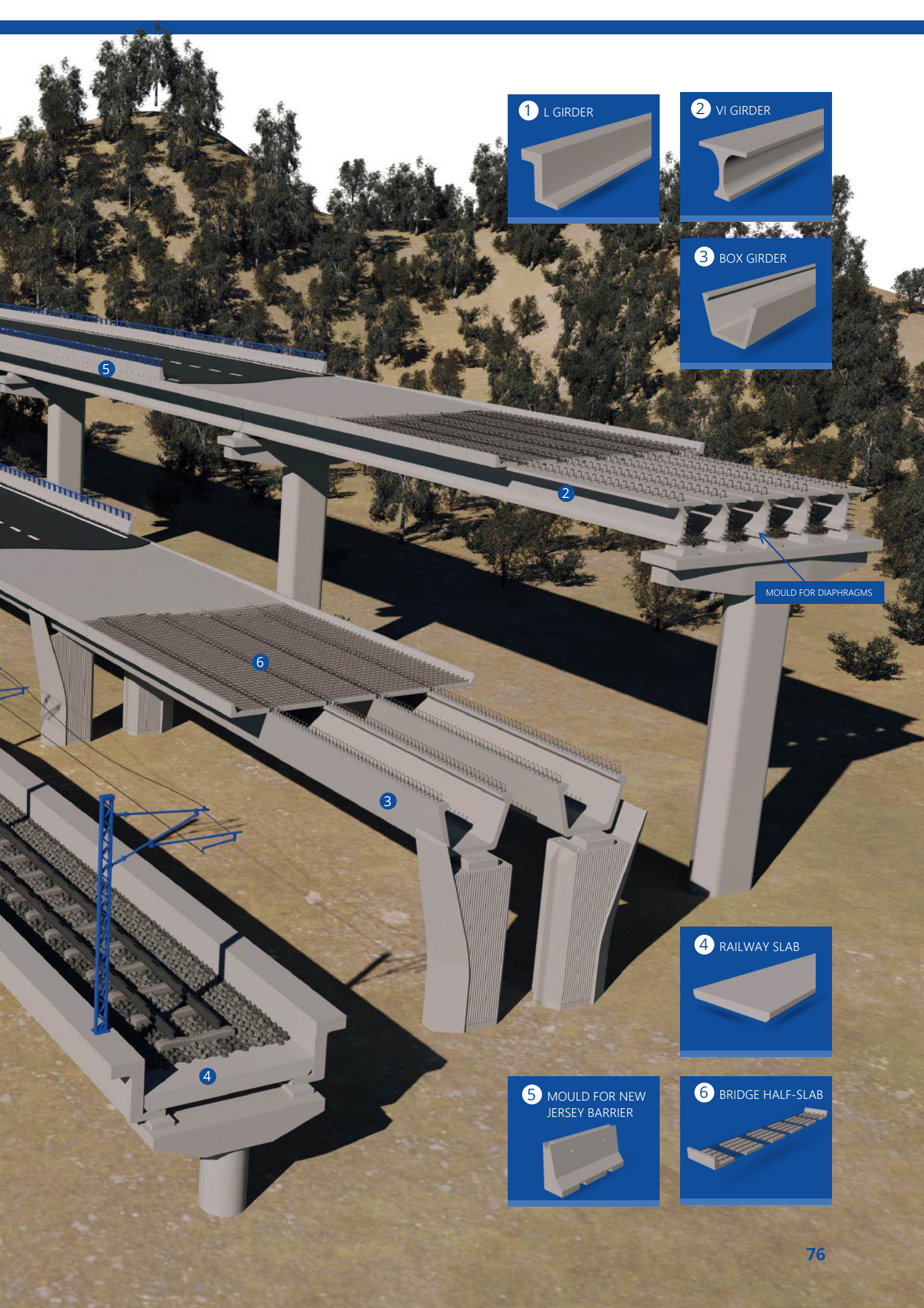
The equipment features telescopic hydraulic cylinders that are activated by a control unit and can turn elements of up to 40 tons.





This section describes our key equipment & moulds for the production of precast concrete elements used in civil works.

CIVIL WORKS



1 L GIRDER



2 VI GIRDER



3 BOX GIRDER

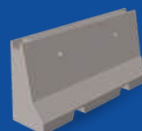


MOULD FOR DIAPHRAGMS

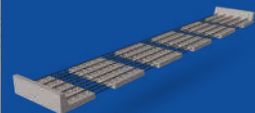
4 RAILWAY SLAB



5 MOULD FOR NEW JERSEY BARRIER

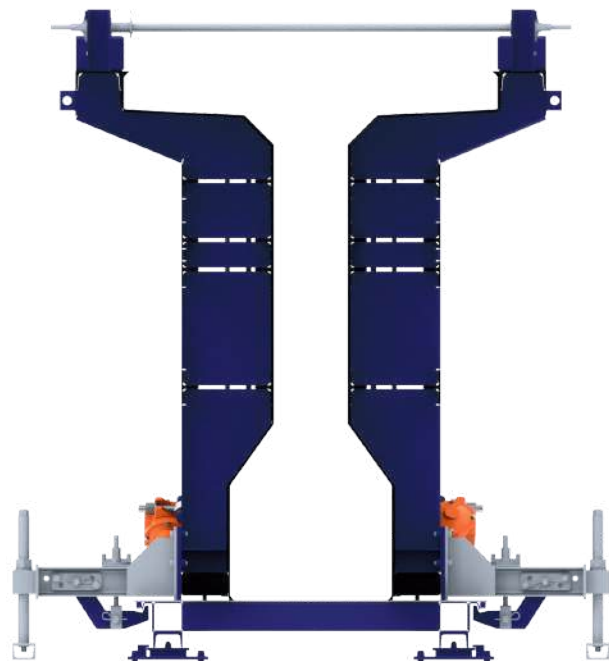
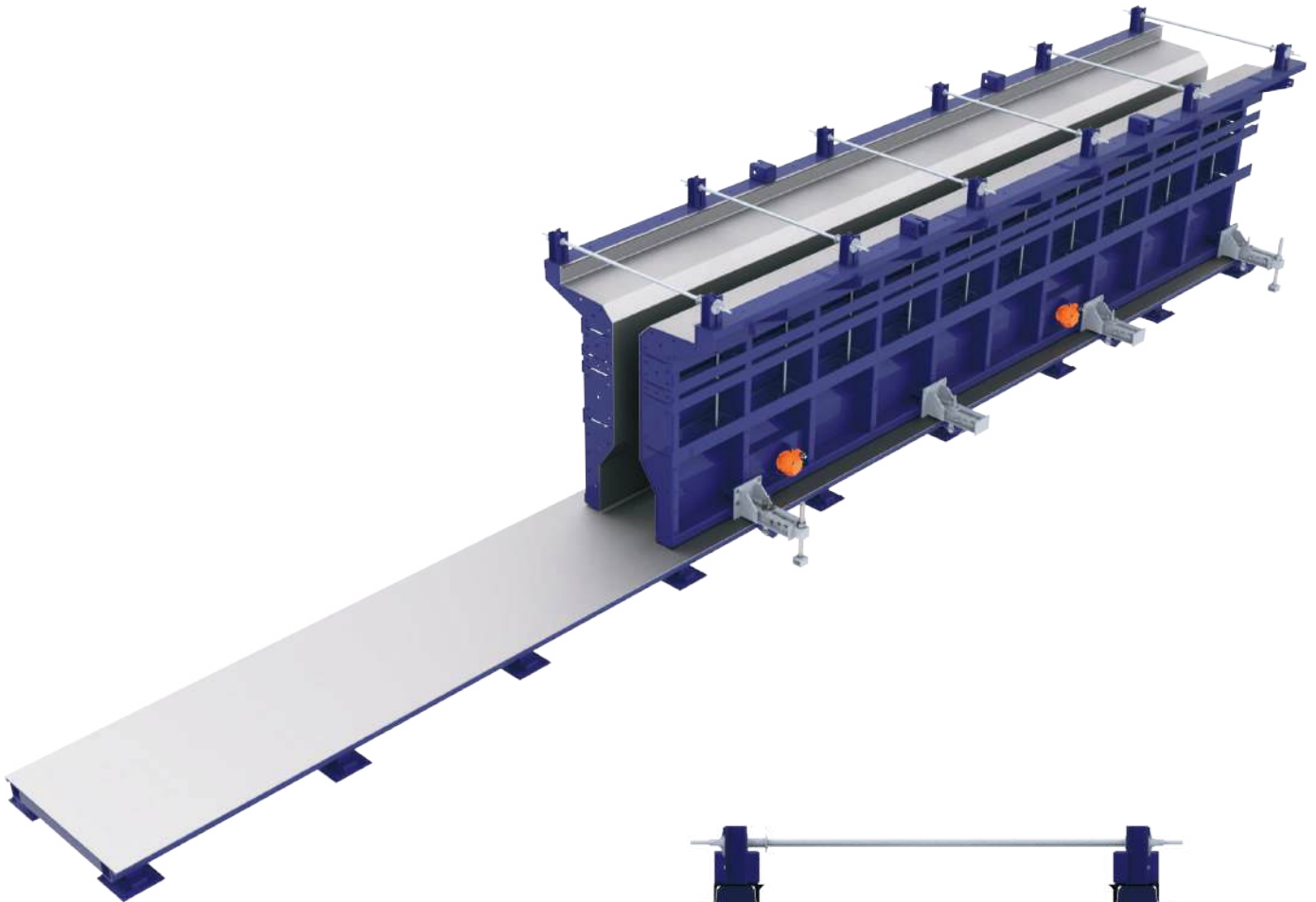


6 BRIDGE HALF-SLAB





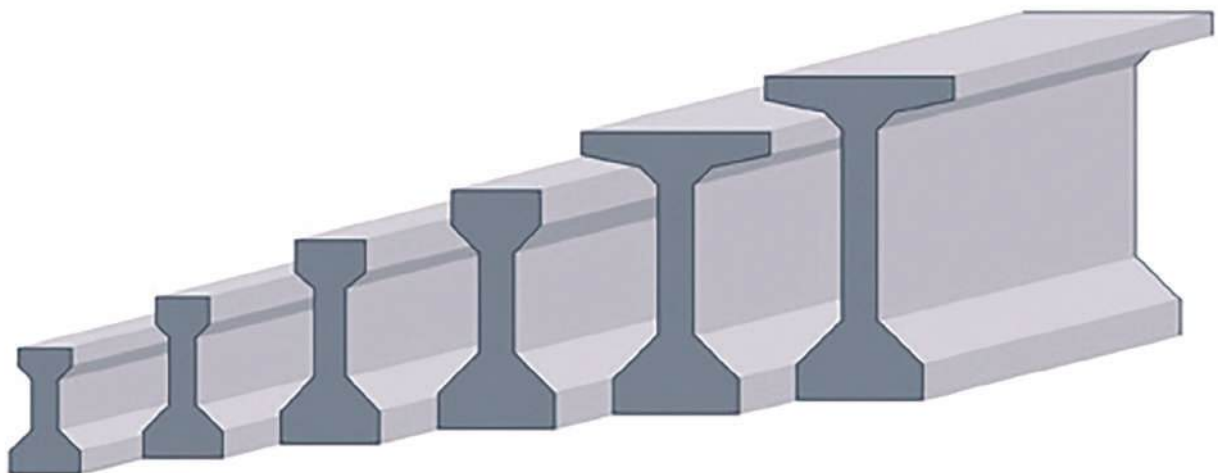
Moulds and Casting Bed Systems for Bridge Girders



Moulds and Casting Bed Systems for Bridge Girders

MOLDTECH manufactures moulds and universal casting bed systems to produce all types of bridge girders in accordance with regulations such as AASHTO, CPCI, NPCAA or any other international standard.

These tracks can have a dimension of up to 125 metres to manufacture several beams at a time.





Moulds and Casting Bed Systems for Bridge Girders

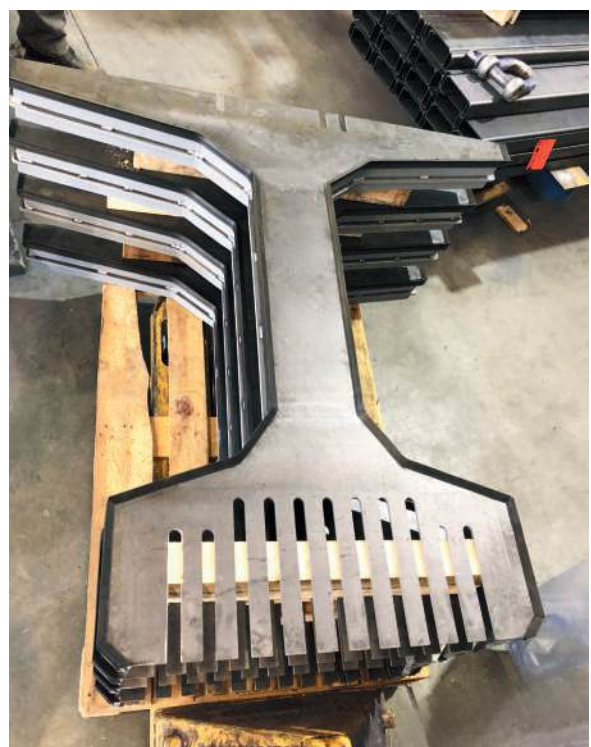


Girders for Bridge





Stopper for Girders



Moulds and Universal Casting Bed Systems for Prestressed Box Girder





Moulds and Universal Casting Bed Systems for Prestressed Box Girder

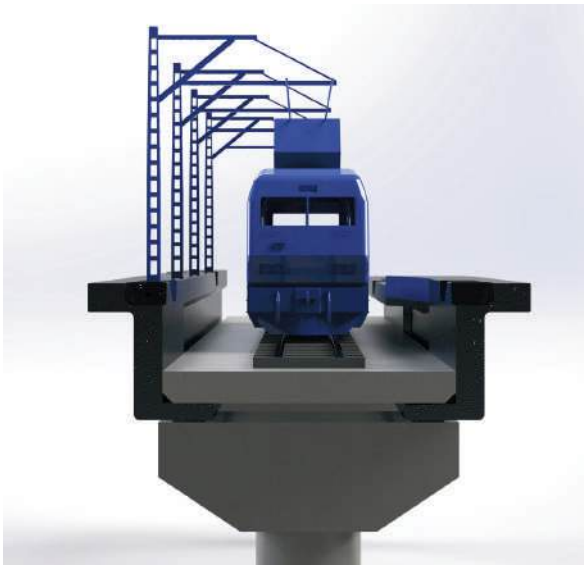


Moulds and Universal Casting Bed Systems for Prestressed Box Girder





Special System for Railway Line







Bridge Piers



Post-tensioned Girders for Civil Works





Mould for Diaphragms



Fixed Tables for Bridge Half-slabs



Fixed tables are specially designed and built to manufacture concrete slabs and half-slabs.

Reinforced half-slabs with short spans are normally used as lost formwork between bridge girders, for the construction of viaducts.



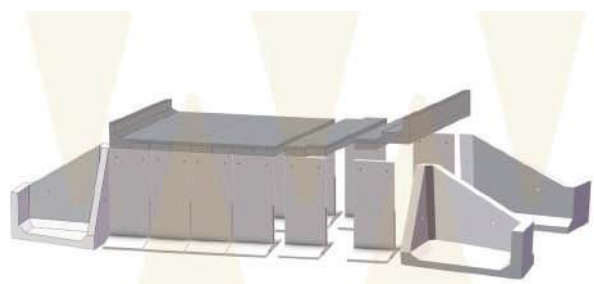
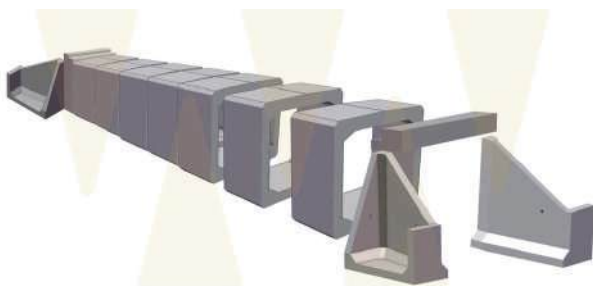
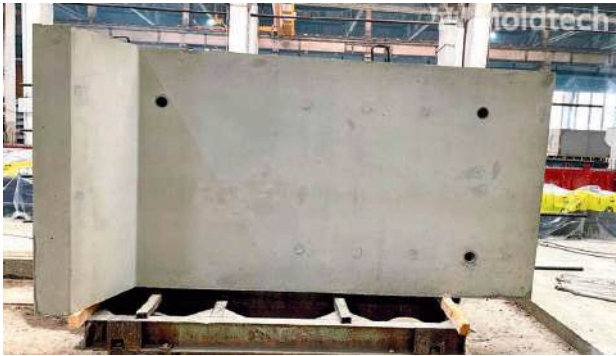


Precast Elements for Roads and Bridges

Moldtech offers moulds for precast concrete elements for roads and bridges. Such as for the manufacture for prestressed concrete slabs and reinforced concrete elements for road underpasses.



Precast Elements for Roads and Bridges





Mould for Bridge Wings



Special System for Prestressed Road Slabs

High productivity machinery system for manufacturing reinforced and prestressed concrete slabs for highway projects.

It is a highly automated process allowing manufacturing many meters a day with very few workers.



Mould for Highway Retaining Walls



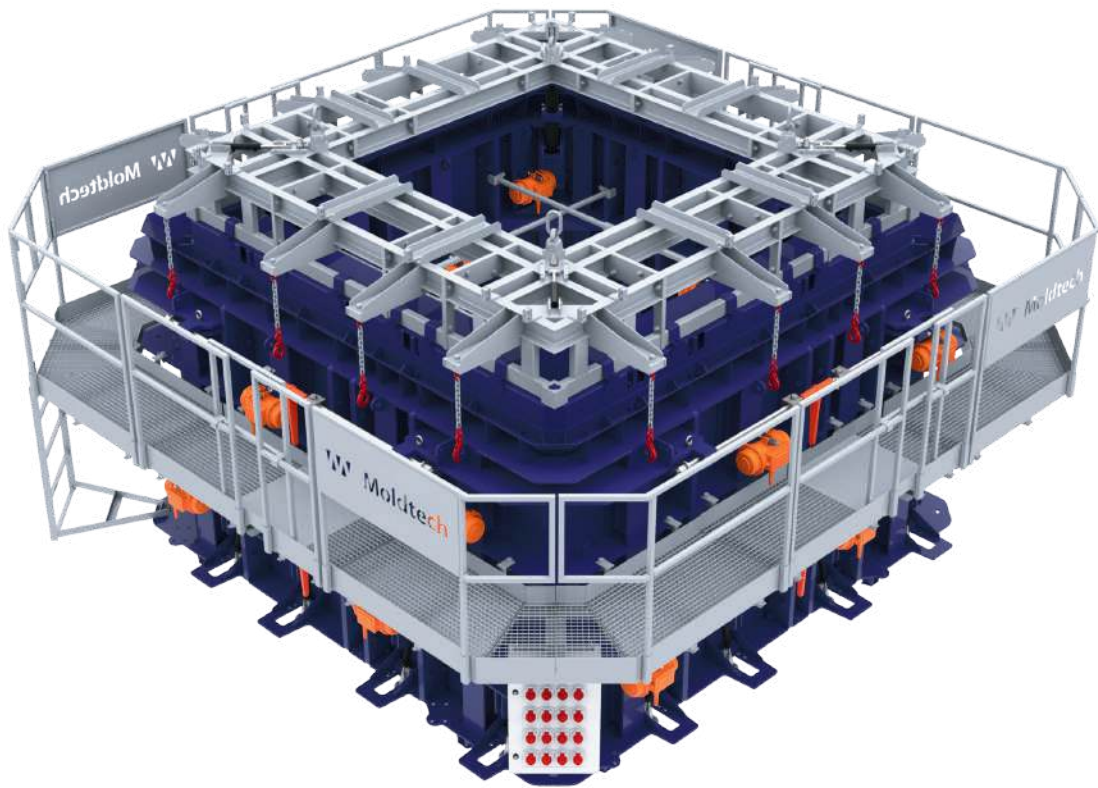
Mould for manufacturing L shaped retaining walls for highway projects. Its functioning is similar to a tilting table. Easy demoulding system that allows extracting and handling the pieces with a forklift.



Mould for Drainage Gutter



Vibropressed Dry Cast Box Culvert Mould MT20





Vibropressed Dry Cast Box Culvert Mould MT20



High productivity system for the production of box culverts using dry cast.

Advantages:

- One mould for sizes from 2 x 2 to 4 x 3
- Mould can be installed without previous civil works
- Possibility of using various thicknesses
- Maximum stiffness
- All functions are carried out hydraulically







Turner 180° for Box Culverts and Pipes



This turner for box culverts and pipes has CE marking and is designed to turn pieces 90° to their final position.

The machine carries out the movement by means of a hydraulic system, which is made up of cylinders and a control unit with an electrical panel.

The turner can be easily transported by overhead crane or forklift.



Adjustable Mould for Box Culvert Wet Cast



Manual system for manufacturing wet cast box culverts.

This modular mould allows to insert or remove panels to change the size and thickness of the pieces.

It is easily operated allowing demoulding in few minutes.

It allows manufacturing pieces with or without male-female connection.

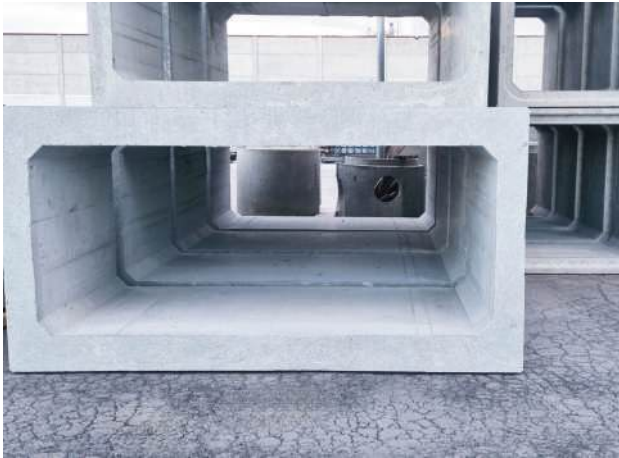
With two sets of bases, it is possible to make two pieces a day.

It can be easily transported and installed at the construction site.





Adjustable Mould for Box Culvert Wet Cast



Stoppers for Production of 3-sided Box Culverts



It is possible to insert stoppers in order to cast two 3-sided box culverts with male-female connections.

This feature allows casting concrete pieces in dimensions that are easier to manipulate, store and transport.



Mould for Making Large Size 3-sided Box Culverts

It is an adjustable mould and the opening and closing movements can be carried out using a hydraulic system.

The bases of the mould can regulate the height of the casted element and can incorporate a male-female connection.

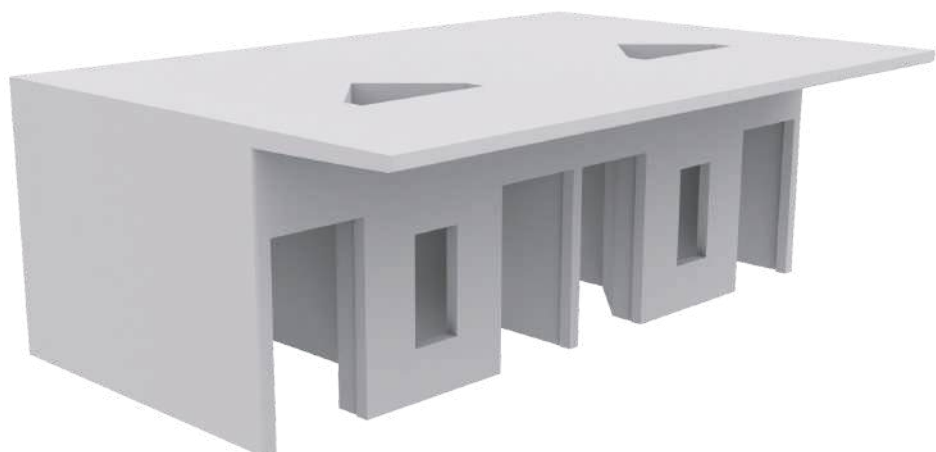
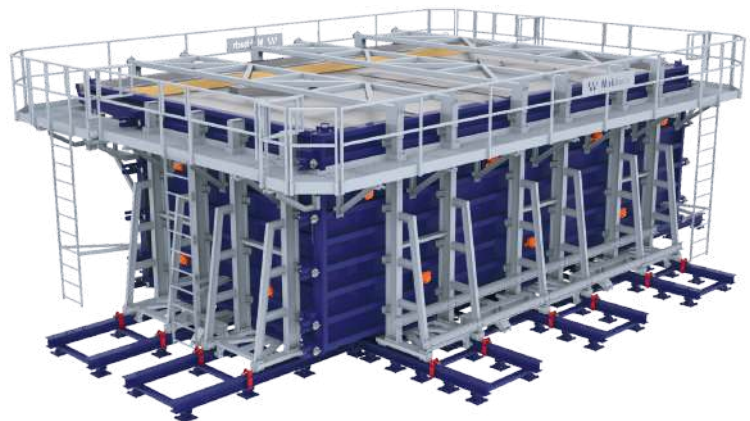
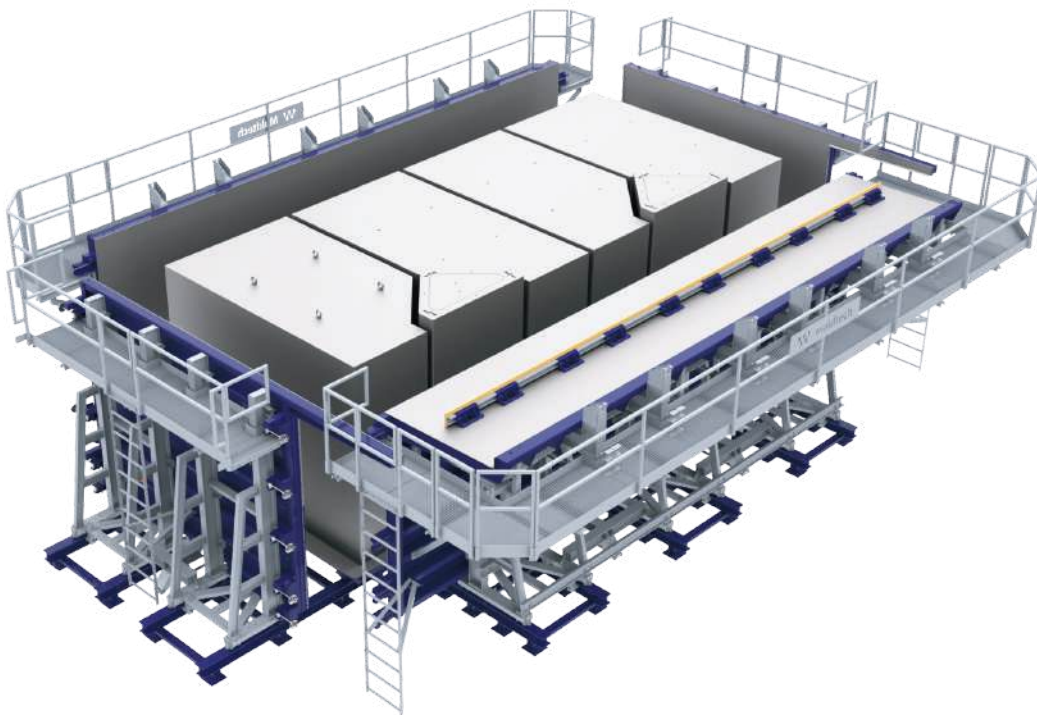
A mould can cast more than one piece using stoppers that also allow the depth of the 3-sided box culverts to be adjusted.

The mould features a vibration system, normally pneumatic. Likewise, it may include a working walkway and heating system.





Mould for Prison Cell



Mould for Prison Cell



This machinery allows the production of elements with 4 sides plus the floor or ceiling and allows to have a seamless connection between the sides. Examples of applications are transformer stations, underground waste containers, prison cells, housing modules, toilets, etc.



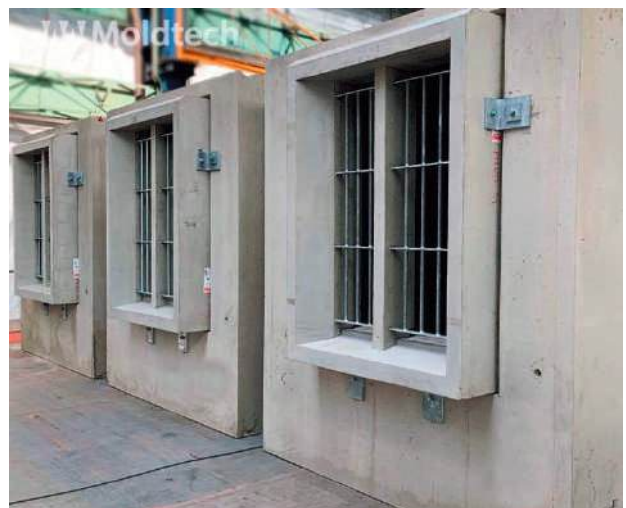
Advantages:

- Minimal conical inclination.
- Hydraulic demoulding.
- Rapid system for taking out exterior walls.
- Custom made designs.





Multi-cells Mould



Mould for Transformer Station



Mould for Containers





Moulds for New Jersey Barriers

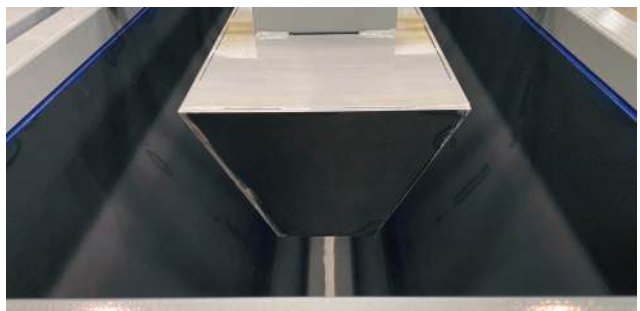
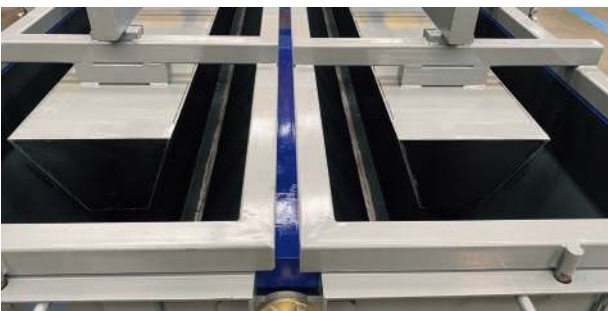


Moulds for New Jersey Barriers



MOLDTECH designs and manufactures moulds for any type of concrete barriers and parapets. These moulds are produced in accordance to the specifications of our clients and the local legislation.

We have wide experience manufacturing moulds for EN 1317-2 test approved barriers and can adapt our moulds to meet any safety requirement.





Turner for New Jersey Barrier



Turner for extracting and turning the New Jersey barrier.

This turner can be attached to forklift truck and works autonomously by diesel generator.

It comes with remote control.



Carrousel System for Precast Concrete Elements



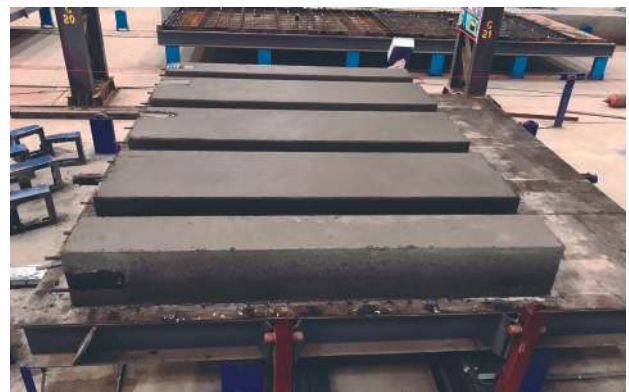
MOLDTECH design and manufacture carrousel type installations for different types of reinforced precast elements like cable trays, manholes, decorative elements etc.

The carrousel moves the moulds alongside the different stations such as filling, steam assisted curing, demoulding and cleaning. The carrousel makes it possible to manufacture large quantities of elements on a continuous basis.





Carrousel System for Precast Concrete Elements

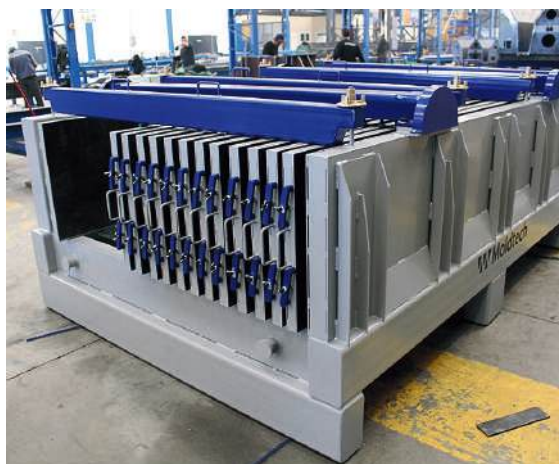


SPECIAL PRODUCTS

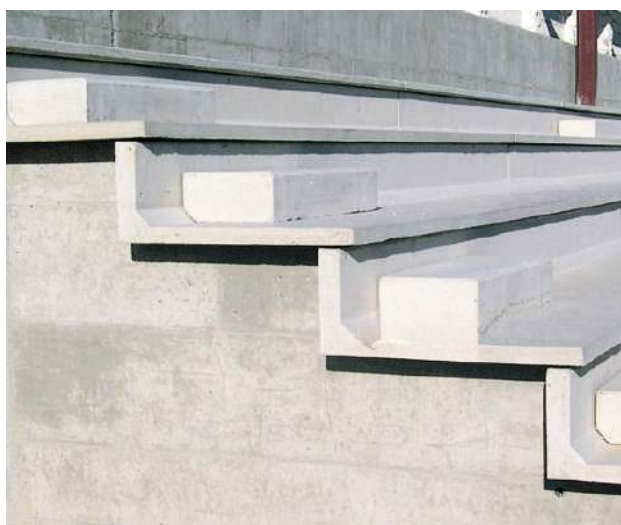
Moulds For Marine Concrete Ballasts



Battery Mould for Light-weight Panels



Mould for Stadium Bleachers



Moulds for Livestock Buildings



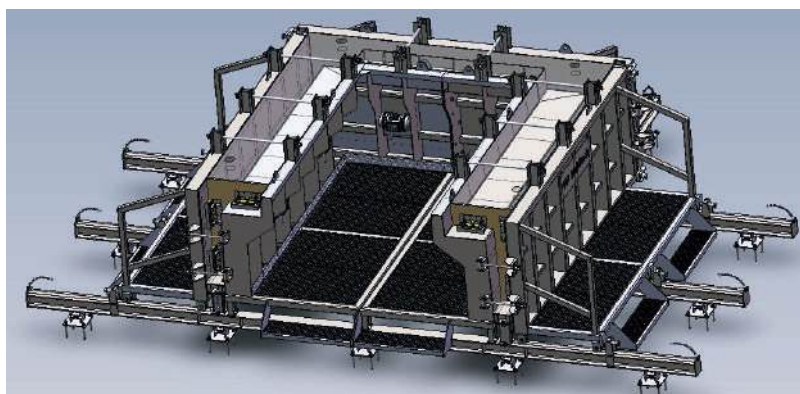
Battery Mould for Railway Platforms



Mould for Garden Planter



Mould for Dock Levellers



Mould for Asymmetric Cone



Mould For Railway Barriers for Railway Line



PIEZAS EXTREMAS ZPX

CONCRETE POURING



Automatic equipment for panel lifting



Casting bed cleaning machine.



Detail of ruler inside pouring bucket.



Detail of pouring bucket ruler.

Concrete bucket



Detail of the hydraulic opening

Equipment designed to carry concrete from the concrete mixer to the moulds to be filled, with a capacity of 2 m³ and 3 m³.

It has autonomous power supply and hydraulic opening and closing of its discharge gate.



Storage



Storage rack for panels



Tensioning strands decoilers

Automatic Concrete Spreader



Automatic machine for pouring the concrete uniformly along the tilting tables and other equipment in a quick and efficient process with the highest quality control.

The machine moves on rails and features automatic adjustment in order to take into account door and window spaces.

All the process is finished with maximum time and labour efficiency.

All the movements are controlled by one worker with touchscreen unit.



Vehicle Giraffe

THE EQUIPMENT FOR TRANSPORTING AND POURING CONCRETE



SELF-PROPELLED MACHINE - PARKING BRAKE SYSTEM - COOLING OF THE HYDRAULIC SYSTEM BY RADIATOR

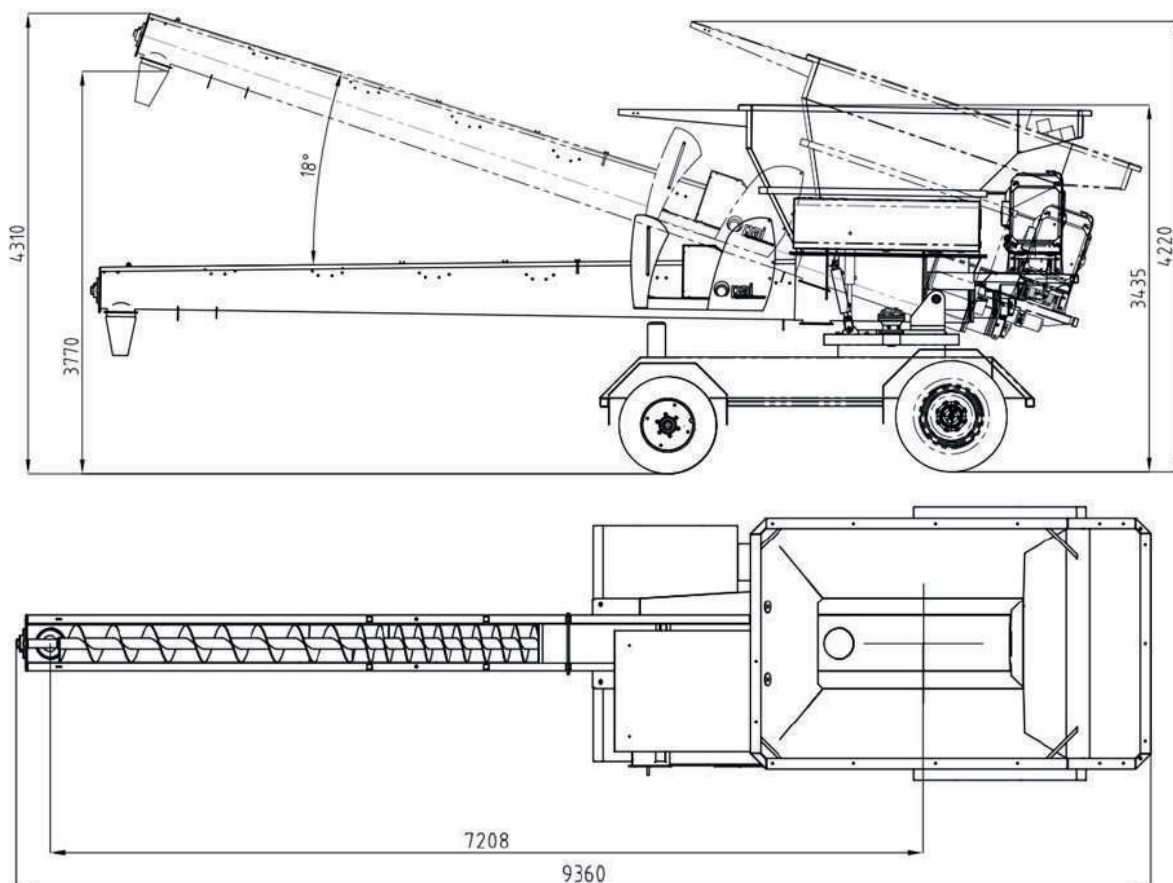
DIRECTION	Hydraulic, frontal.
WEIGHT	Approximately 20,943 lbs, depending on models.
HOPPER CAPACITY	3 cubic meters
MAXIMUM ANGLE OF ENDLESS CONVEYOR	18° to the vertical
VELOCIDAD MÁXIMA DE DESPLAZAMIENTO	10 km/h
MAXIMUM DISPLACEMENT SLOPE	5°
ENGINE POWER	Diesel 70 kw
ROTATION	360° for 120
TEMPERATURE RANGE	-20 °C ≤ T ≤ 45 °C





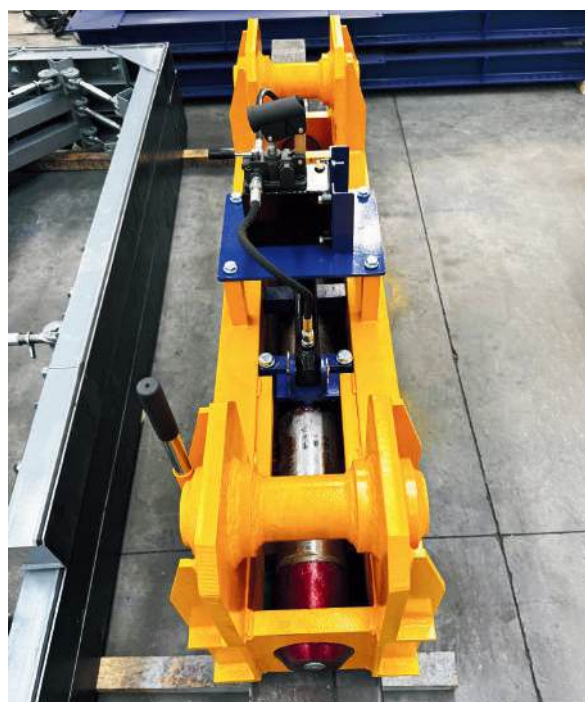
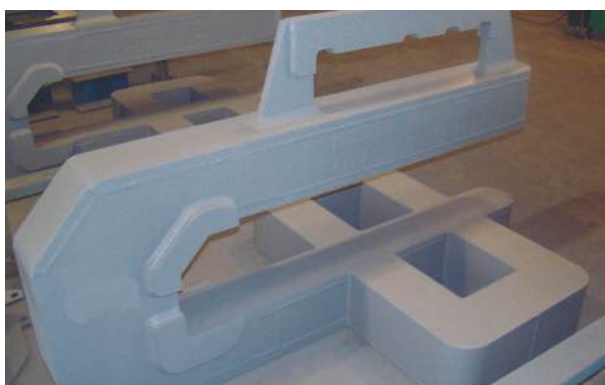
The 'Giraffe' can feature a wide range of optional extras:

- Pouring extender
- Covers for endless conveyor
- Hydraulic guillotine for concrete pouring control
- Solid wheels
- Closed cabin
- Extra hopper height increasing capacity up to 4 m³ (5.23 yd³)
- Rear view camera
- Tungsten alloy reinforced endless conveyor



ACCESSORIES

Lifting Devices



Troweling Machines



The troweling machine improves the surface finishing of the concrete once it is partially set. It has a high performance for finishing work.



The weight, speed control and easy way of the height level changing are characteristics that allow you to obtain high productivity.

Driven by two synchronized electric motors for the longitudinal translation maneuver of the semi-gantry with adjustable speed.

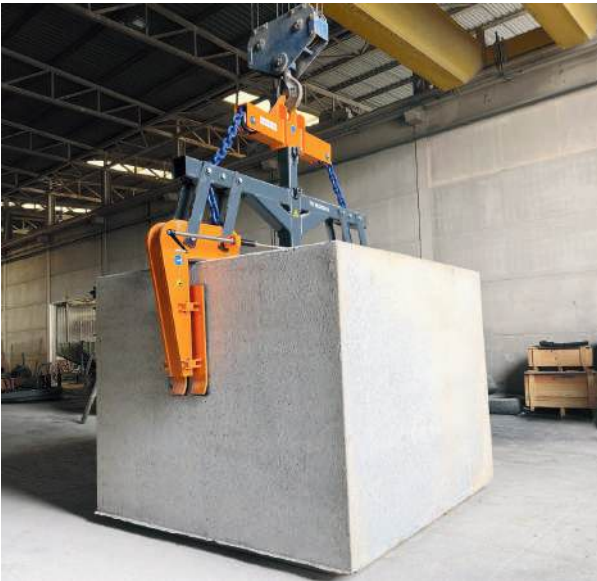
With a 1.5 kw motor, with hydraulic raising and lowering system.

Includes a remote control.

This machine carries the most rigorous safety standards that limit the operating range or completely stop in case of emergency.



Lifting Tool for Precast Concrete Pipes and Box Culverts



This equipment is used for products weighing up to 15 tons and is compatible with diameters or measurements ranging from 1500 to 3000 mm, adapting to a thickness range of 160 to 200 mm.

Designed for the safe and precise handling of precast concrete pipes and box culverts.



Its design allows for easy and safe operation, ensuring that concrete pipes and box culverts are transported without incident, reducing the risk of damage during handling.

Transport wagon for Panels



Hydraulic Unit

Moldtech's hydraulic units are custom-designed (power, tank capacity, type of start-up and number of control actuators/cylinders to control) according to the needs of the installation: tilting tables, column moulds, vertical staircase moulds, MT20, 3D moulds, 90° and 180° turners and mini hydraulic units.

General characteristics:

Adjustable for 380 V - 50 Hz / 480 V - 60 Hz.

Manual or electric drives

Top brand components

- International certifications: CE / UL / UCKA



Frequency converter



Mobile Steam Heating System

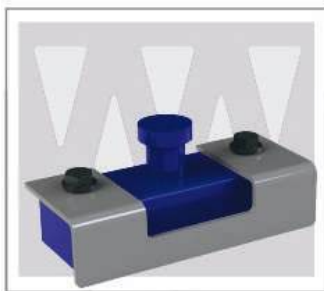


Magnetic boxes

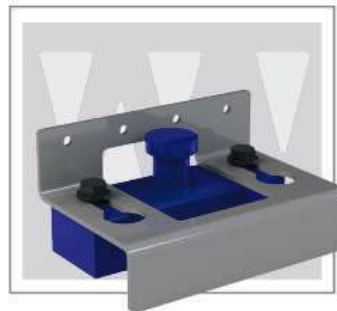


Our high-quality magnetic box is designed with high-performance neodymium magnets that ensure a firm and secure fixation. The core of the magnet is protected against corrosion by steel strips and by the blueing of the box structure, which guarantees a long service life of the product. The magnetic box is used to position and fix the plywood shutters to the mould and can be easily connected to the shuttering panels with the appropriate accessories. In addition, it is designed to add different adapters and accessories for greater versatility in its use. The integrated neodymium magnetic block ensures an optimal hold against slipping and accidental movement. With our magnetic box, you can be sure that your plywood boards will stay firmly in place, increasing the efficiency and productivity of the plant.

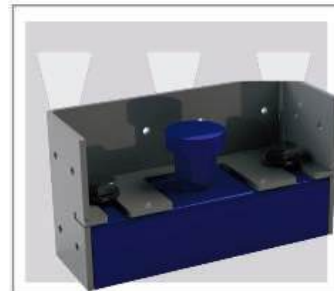
Adapter



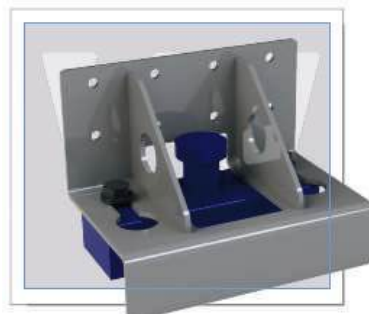
L-Adapter



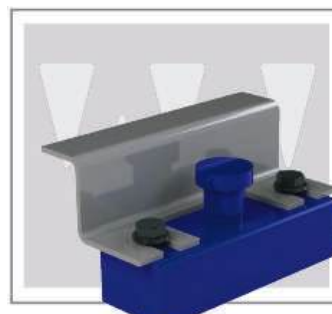
S-Adapter



U-Adapter

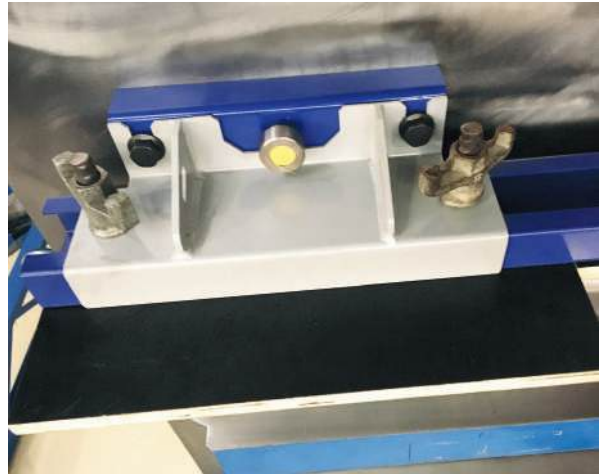


Ribbed S-Adapter



Z-Adapter

Magnetic boxes





COMPREHENSIVE
SERVICES



LOGISTICS AND INSTALLATION

Logistics

As early as in the design phase, our technical department develops the machinery taking into account the optimum logistical solution ensuring a safe transport but at the same time searching for cost savings in transport and installation costs. Depending on this analysis the machinery is sent by standard containers, “open top” containers, or directly placed at the ship or any other valid alternative.

At the moment of looking for the best supply route we use outside logistical experts who know our products and have contrasted experience in sending heavy and large machinery.

Prior to its packing and preparation for transport, all machinery is tested at our facilities and can be inspected by the client ensuring that it fulfils all the previously agreed specifications.



Equipment installation

All equipment is delivered to our clients and installed ready for use.

Moldtech will provide to the client with sufficient anticipation the requirements the factory should fulfil in order to have a successful installation. Moldtech can also provide assessment about factory lay-out.



All installations are carried out by our own qualified workers starting with levelling the machinery supports up to test production filling the moulds with concrete.

Our on-site staff can assist our clients on subjects like selection of prime materials, ironwork etc.

Also, they will instruct clients' personnel on how to perform maintenance.

The equipment is formally received by our client once installation has fully been concluded and test production proves that production can take place achieving the desired standards.



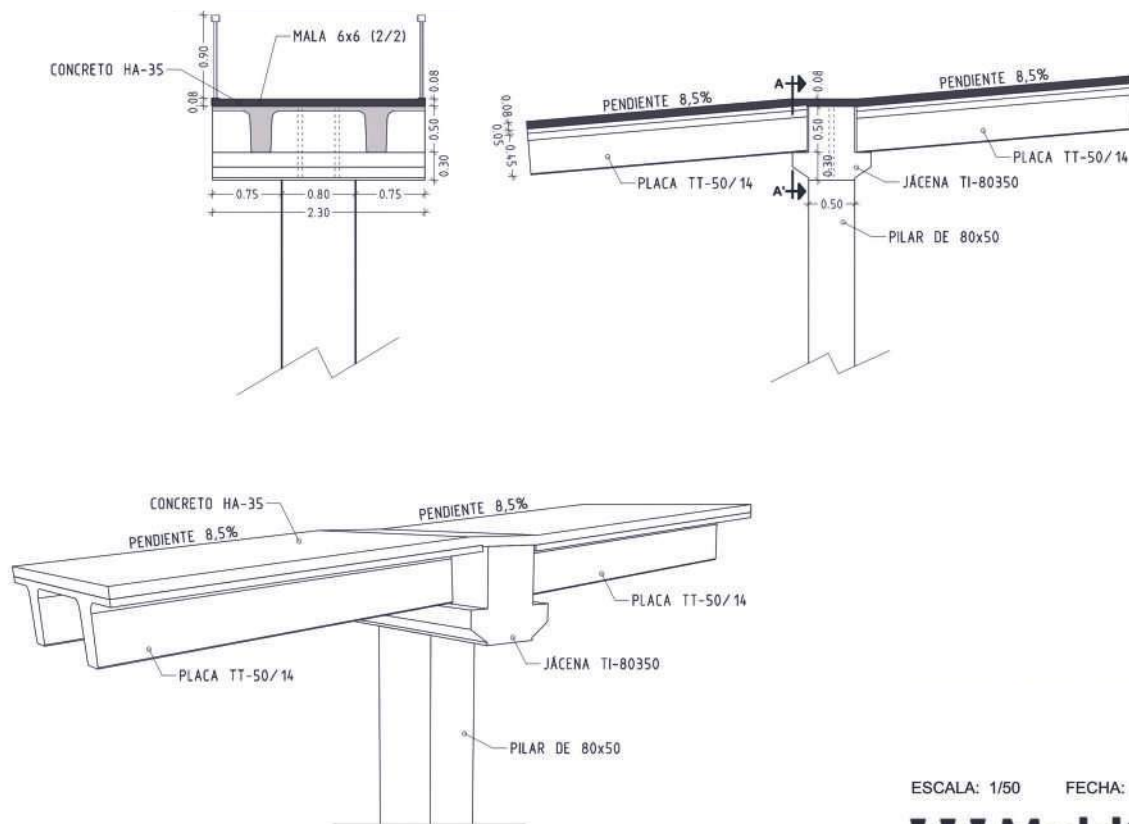
All our personnel in charge of installation will act in accordance to a work safety plan, will have all the corresponding required documentation and will be outfitted with the necessary safety equipment.

TECHNICAL SERVICES

Technical Advisory Service

Thanks to the accumulated experience of over 30 years in the industry, Moldtech is able to offer additional services in the area of technical advice. This technical assistance can cover a variety of areas such as:

- The design and structural calculation of precast elements
- Cost price calculation of precast elements
- Factory lay-out taking into account an optimization of production flow
- Organization of work shifts at precast plant
- Job safety plans
- Design of precast buildings



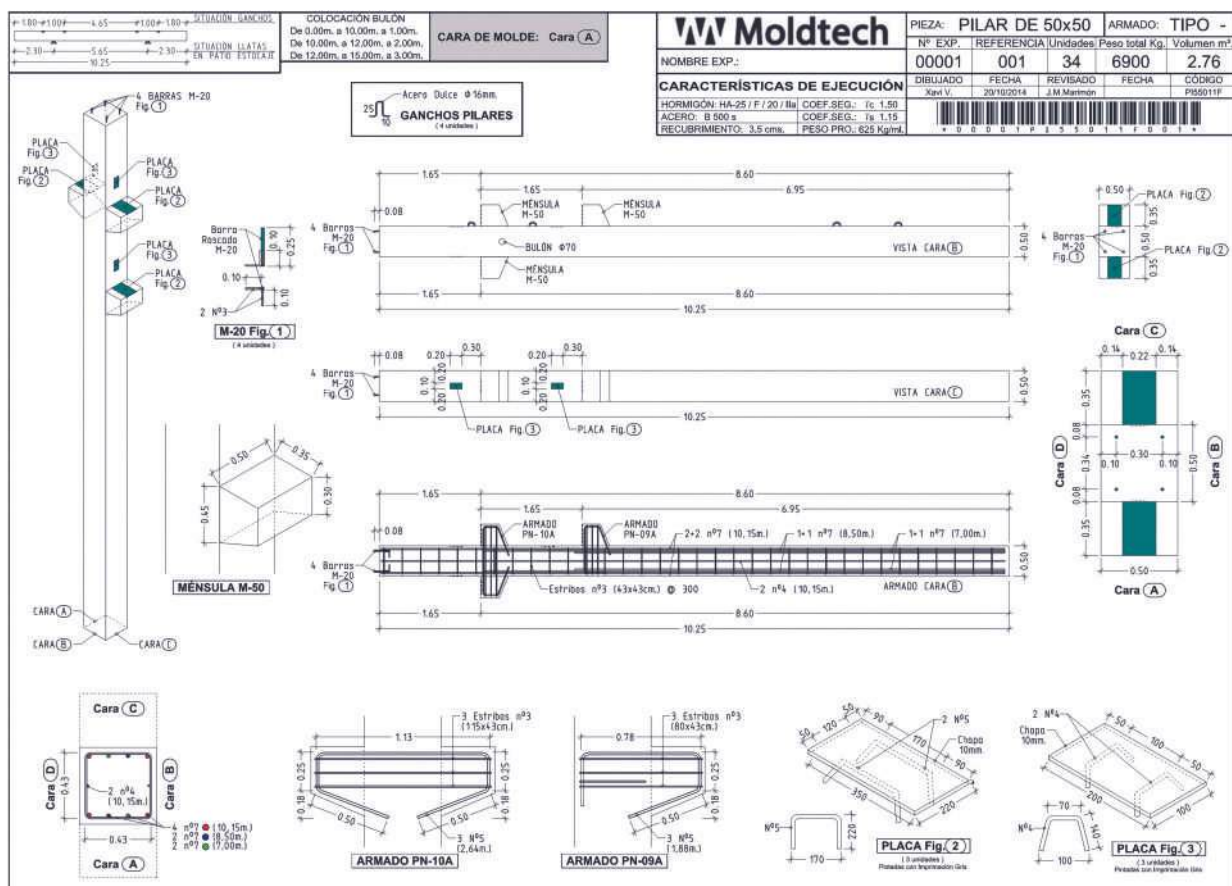
ESCALA: 1/50 FECHA: 25/11/2014

Moldtech

Technical Advisory Service

Our assistance can start at the preliminary phase of a setting up a precast factory and accompany the client throughout the whole process towards starting up production.

In order to assure the quality of our services we apply the latest engineering technologies and also form strategic cooperation alliances with outside specialists.



Expertise

A specialized team from Moldtech ensures the proper functioning of all equipment, as well as the application of the TPM methodology to guarantee low maintenance costs and zero downtime during the production phase of each installation.

Additionally, at the client's request, Moldtech carries out periodic inspections and necessary adjustments to maximize operational efficiency, minimizing risks and ensuring continuity of the production process.

Thanks to its experience and technical expertise, Moldtech offers comprehensive support, from the initial installation to preventive and corrective maintenance, ensuring the durability and reliability of its solutions over time.



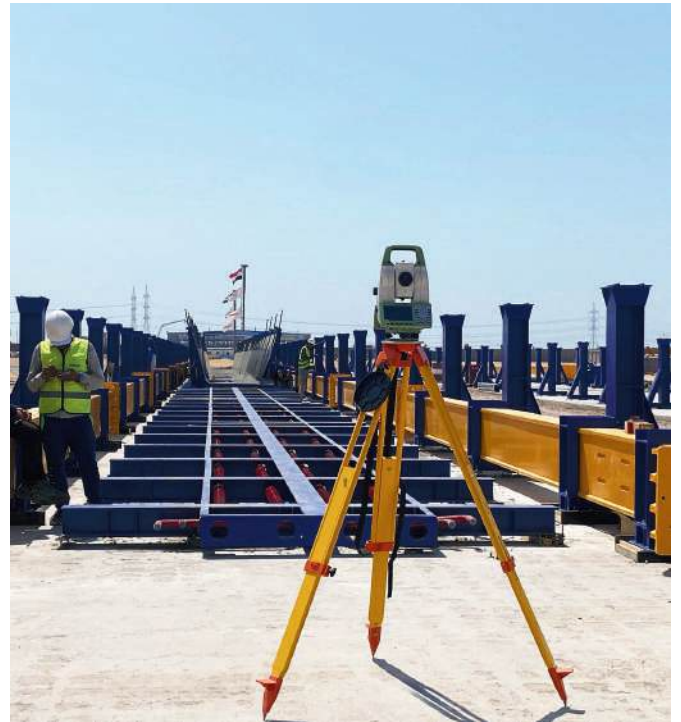
QUALITY

Turn Key Projects

To set up a total new factory for precast concrete elements is a complicated task as many factors interact and all have to be well coordinated in order to ensure an optimum final result. This implies sourcing of different suppliers, design of factory lay-out, control of construction timetable, costs and quality to name a few.

At MOLDTECH, in cooperation with partners, we can provide you a global solution which include:

1. Engineering services
2. Consulting and supervision services
3. Lay-out of machinery and installation
4. Automation and control
5. Start-up
6. Training
7. Quality control



SAFETY

Safety and Signals

Nowadays, safety and security systems on machinery is one of the most important issues to consider when developing and designing the mentioned machine.

At MOLDTECH we give absolute priority to designing our products with the most suitable ergonomics aspects for all those workers who will have to carry out their daily functions with the machine, as well as to install on it all necessary devices which guarantee their safety while working with our machine.

Our safety & health department is in charge of incorporating all required elements, such as protections, railings and the appropriate signals to the design process.

Concerning the electrical, mechanical and all hydraulic elements installed in our machines, Moldtech products are equipped following the specific regulations in the country where the machine will be used, and in compliance with the strictest standards worldwide.

Another very important aspect to consider is the installation of anchoring elements on the machine for its unloading and placing it on the final working position at client's facilities. Furthermore, Moldtech also requires to customer the correct foundations for the equipment to be installed, as well as a working planning to carry out all jobs in an efficient way.

The current massive competitiveness in the market, the intense and aggressive sales and marketing proposals, and local manufacturers copying some equipment, forces us to be more creative every single day by developing new and innovative solutions for our products. But we never forget that the security must be the most important aspect, and at Moldtech it is our main concern.

Identification and safety solutions

At Moldtech we provide our own designers, specific printers and special identification and safety professional software and database, which allows us to design and customize our own exclusive labels, signals and tags. These mentioned labels and signals are later installed in our pre-stressing equipment, our tilting tables and in many other moulds and products.

Likewise, our complete manuals which are also supplied with the machine, provide to the customer a detailed analysis of all the components used in the machine, the potential necessary spare parts for the correct maintenance of the machine, and the appropriate certificates.



Safety Principles

Moldtech has developed its own management system around the principles and practices set out in the UNE-EN ISO 12100 norm. These standards provide the structure and the guide to take the correct decisions concerning design, production, commissioning, and the marketing of the products, for manufacturing machines with the necessary safety conditions for its intended use during all their life cycle.

The application of these principles requires of an important investment in a multidisciplinary human team with a great knowledge of the use of these machines, the concrete production processes, accidents and health-related stories, all techniques and technologies available in each moment, as well as the legal framework in which each machine will be used.

Painting Quality Certificate

At Moldtech we have a blasting chamber and, we could also provide different painting application systems which allow us to certify the protection against corrosion. It also gives us the chance of guaranteeing a specified durability of the painting in accordance with the UNE-EN ISO 12944-5: 2020 norm.

Safety Protection

In Moldtech we are always looking for our customers satisfaction, and we try to anticipate to the upcoming technological changes by allocating all the necessary resources to get new designs of our own equipment with the same uses and benefits than the previous one, but increasing the safety systems on it and decreasing the potential security risks of the machine.

We have the aim of preventing any kind of damage working with our products, therefore Moldtech incorporates different security systems which guarantee the maximum safety at the workplace.

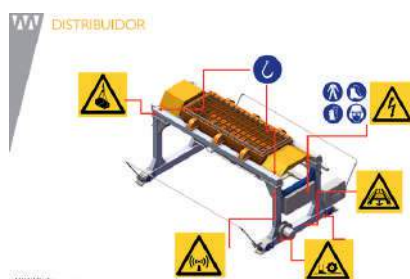
Moldtech different security system solutions products include:

- 1.Fixed guards (protection screens) and mobile (protection boxes)
- 2.Interlocking devices
- 3.Lockout device
- 4.Sensitive control device
- 5.Interlock mechanisms
- 6.Mechanical sensitive protective equipment
- 7.Non-mechanical sensitive protective equipment (safety light curtains)
- 8.Limit switch / automatic speed change switch
 - Automatic speed change
 - Pilot check valve
 - Parachute valve

Risks Map

The Quality Control Department of Moldtech, which is the responsible of the safety engineering aspects in our products, processes the risks maps or the safety signals layout. These maps or layouts facilitate the fast identification of residual risks in our machinery.

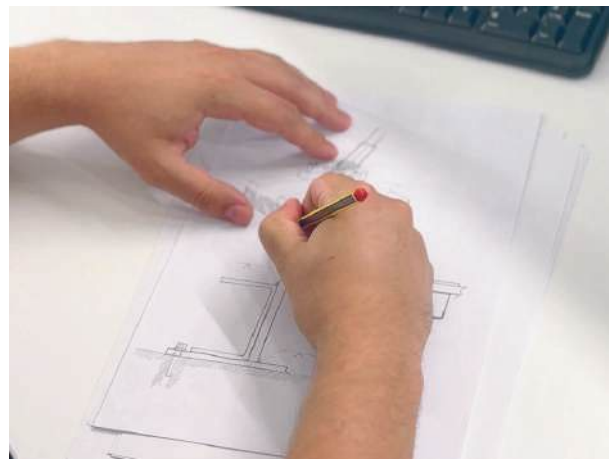
In order to make easier the maintenance of these safety signals, Moldtech includes the mentioned layout in the instructions and maintenance books supplied with the machine.



TECHNICAL OFFICE

Within our continuous desire for growth and complying with our business plan for the period 2020-2025. We have made an ambitious investment effort in several areas of our production unit.

At the beginning of 2023 we have inaugurated new offices for our engineering department, increasing the work space and providing them with the most modern means. This new area of more than 400 square meters is an open area with thermal and acoustic insulation that meets the highest quality standards.





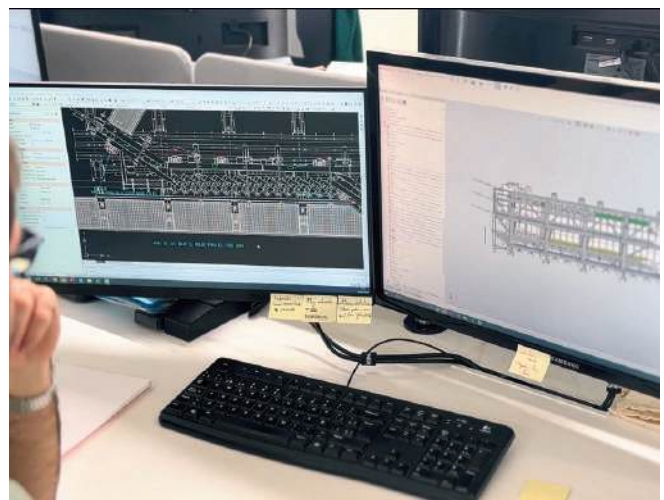
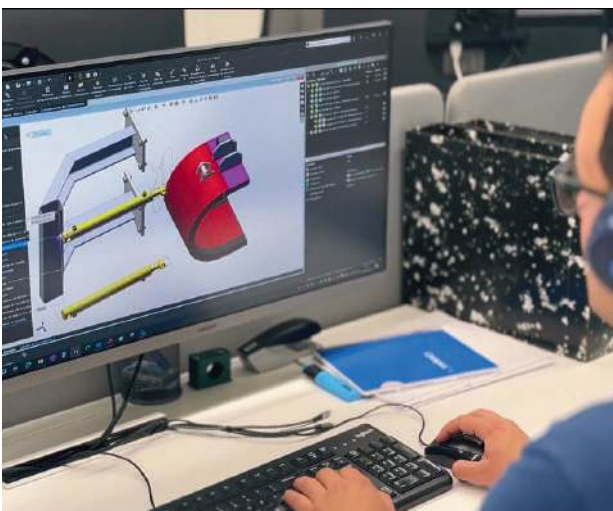
If you can
cast it,
we can
design it.

Moldtech

The workspace includes new licenses for our SolidWorks professional software. In addition to other first-rate IT tools, in this new area we have incorporated the purchasing, logistics and quality department. In this way, professionals from different areas are in a common area where synergies are created and ideas emerge that shape our solutions for the precast concrete industry.

With a team of 26 people in this new engineering area and a total workforce of 180 people, Moldtech continues to be at the forefront of supplying equipment and comprehensive technical solutions for precast concrete with projects on all 5 continents.

After exceeding our billing and order book forecasts in 2023, in 2024 we have an ambitious growth and investment plan to continue being leaders in our sector.







**WE DESIGN, DEVELOP
AND MANUFACTURE
FLEXIBLE PROJECTS,
ADAPTING TO THE NEEDS
OF EACH CLIENT**



THANK YOU

Moldtech
EQUIPMENT FOR PRECAST CONCRETE PLANTS



EQUIPMENT FOR PRECAST CONCRETE PLANTS

Seville, Spain, Europe

C/ Polysol Uno, 40
Pol. Industrial Piedra Hincada
41500 Alcalá de Guadaira, Sevilla.

TI_ +34 955 44 41 90
E_ info@moldtechsl.es

www.moldtechsl.es