

Moldtech

EQUIPMENT FOR PRECAST CONCRETE PLANTS

ELEMENTS FOR
ROADS AND BRIDGES



www.moldtechsl.es



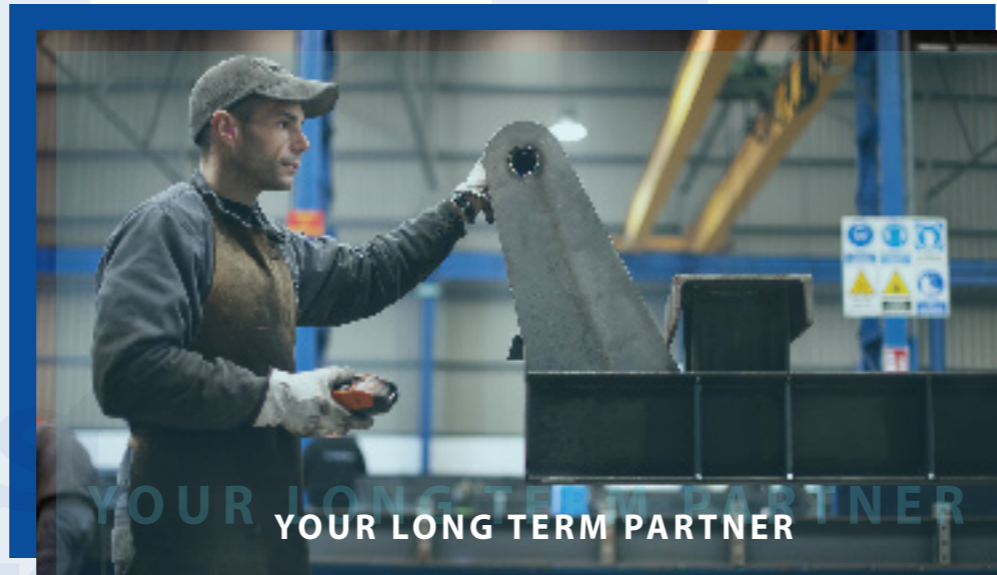
ELEMENTS FOR ROAD AND BRIDGES



ROAD AND BRIDGE CONSTRUCTION

Moldtech offers a wide variety of molds to manufacture prefabricated elements for roads and bridges adapted to international standards.

Moldtech, as an expert supplier of precast concrete equipment, will be your best long-term partner. Below we explain what elements you need to carry out this type of civil engineering and the equipment we offer to produce them, guaranteeing maximum quality and safety throughout the production process.



Precast
Concrete
Equipment



ROAD AND BRIDGE CONSTRUCTION SELF-REACTING MOULD FOR PRESTRESSED BEAMS

www.moldtechsl.es



System that integrates in itself the heads that support the stressing and destressing operations. It is used to produce any prestressed element, where the mould itself is capable of withstanding the tensioning efforts.

This system has a number of advantages that make it ideal for the production of beams in temporary locations on site or where a dedicated foundation is not possible. Our customers use this system to set up ephemeral factories dedicated to specific construction sites in remote locations, drastically reducing transportation costs. Moldtech has experience supplying equipment up to 125m and 1500 Ton, but there is no theoretical limit in length or capacity.



Mold for prestressed beams:
Several parts per day depending on the configuration of the mold





PIT FOUNDATION PRESTRESSING SYSTEMS FOR PRESTRESSED BEAMS

System of heads and prestressed equipment for the manufacture of different prestressed elements that require the construction of foundation pits. The prestressing heads are elements designed to offer a reaction force to the amount of pull resulting from the tension of the strands. The system is comprised of an active stressing head and a passive stressing head. The passive stressing head is a kind of buttress consisting of a steel structure anchored to the concrete foundation pit. It includes a matrix of drill holes to thread the strands according to the precast element to be cast.

The active stressing head has the same steel structure and incorporates a set of hydraulic cylinders to push the movable mask with the same matrix of drill holes. These cylinders allow the remaining tension of the strands to be dissipated when the concrete has hardened enough. After this, it is possible to cut the strands safely. The prestressing heads are designed according to the maximum amount of tension required to be resisted.





ROAD AND BRIDGE CONSTRUCTION

UNIVERSAL CASTING BED FOR POST-TENSIONING

www.moldtechsl.es

The design of moulds for post-tensioned beams includes certain particularities of this type of products including, among others, formwork boxes for tensioning bundles.





ROAD AND BRIDGE CONSTRUCTION

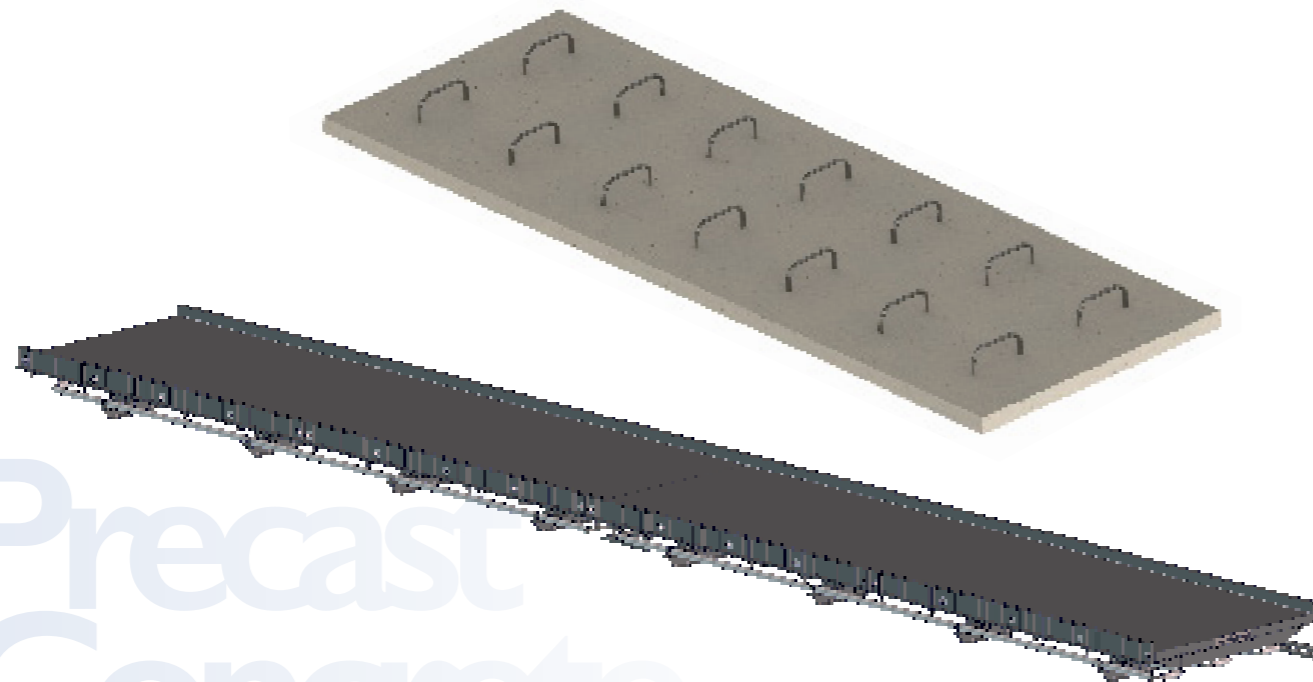
FIXED TABLES FOR BRIDGE SLABS



Reinforced half-slabs with short spans are typically used as lost formwork between bridge girders, for viaduct construction.

Moldtech manufactures and supplies fixed tables with or without prestressing capacity to enable precasters to deal with all types of precast slab based projects.

The fixed tables can be supplied with different side band designs that allow height adjustment, precast slab width adjustment or even edge geometry adjustment. In general the forming dimensions can be adjusted by using different formwork options.



Fixed table for pre-slabs:
Several pieces per day depending on the table configuration.





ROAD AND BRIDGE CONSTRUCTION

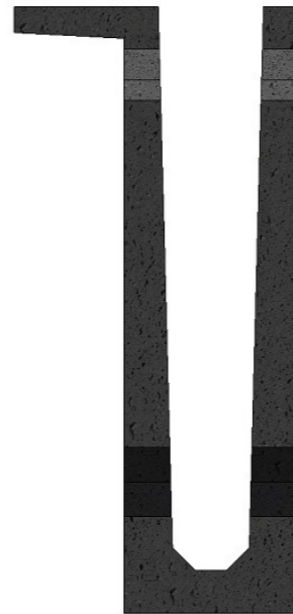
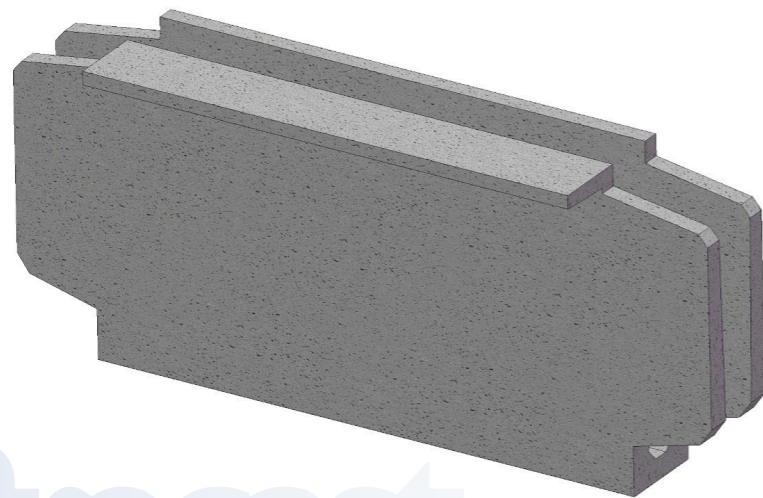
DIAPHRAGM MOLDS

BRIDGE DIAPHRAGMS

Diaphragms are structural elements that are arranged in bridge decks, internally, in box sections or transversely between beams.

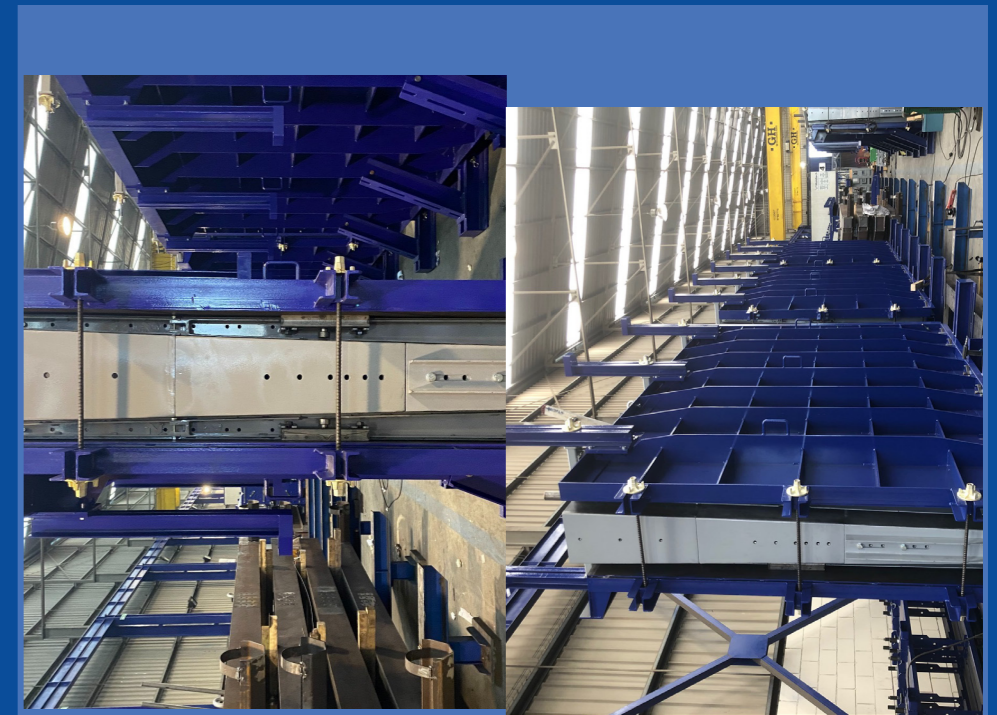
They serve to transmit loads from the slab to the main girders and stiffen the system against lateral loads.

Moldtech supplies modular molds for the production of diaphragms that allow adjusting their dimensions to cover families of beams with different sizes.



Mold for Diaphragms:
One piece per day.

www.moldtechsl.es





ROAD AND BRIDGE CONSTRUCTION

MOLDS FOR BRIDGE PARAPETS

Parapets are rigid safety devices that are placed longitudinally at the lateral ends of bridges and similar structures, mainly for the protection of users.

The molds produced by Moldtech are designed to produce different geometries and incorporate the necessary registers to allow the passage of connecting armatures and other elements such as threaded inserts for the installation of accessories.



Mold for Parapets:
Several parts per day depending on mold configuration.





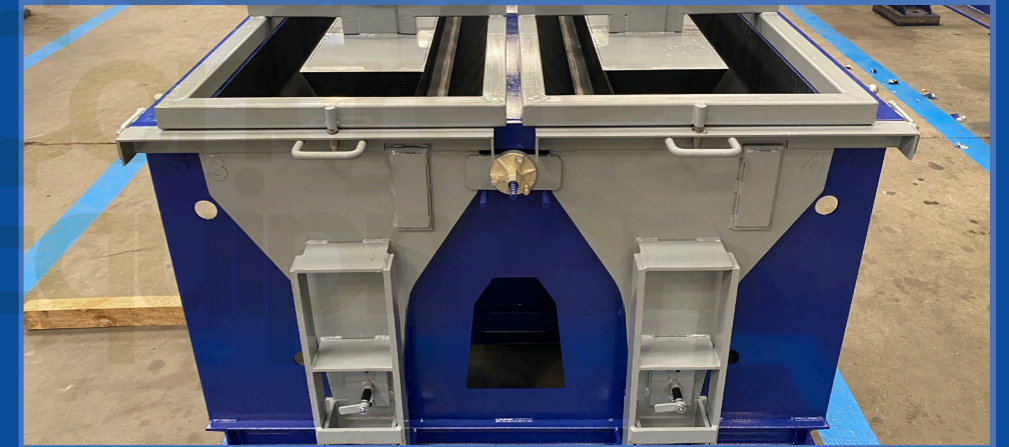
ROAD AND BRIDGE CONSTRUCTION

NEWJERSEY BARRIER MOLDS

Moldtech designs and manufactures molds for any type of concrete barriers and parapets. The molds are custom made and can be designed to comply with any legislation or safety standard of each country.



**Mold for New Jersey Barriers:
From 2 pieces per day, depending on configuration.**





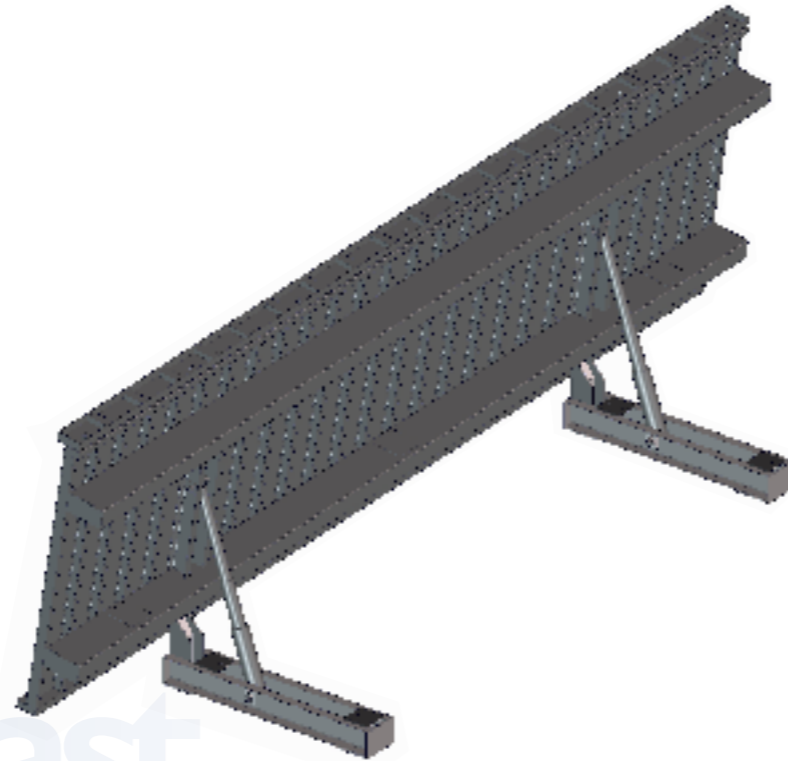
ROAD AND BRIDGE CONSTRUCTION

TILTING TABLES FOR ACOUSTIC SCREENS

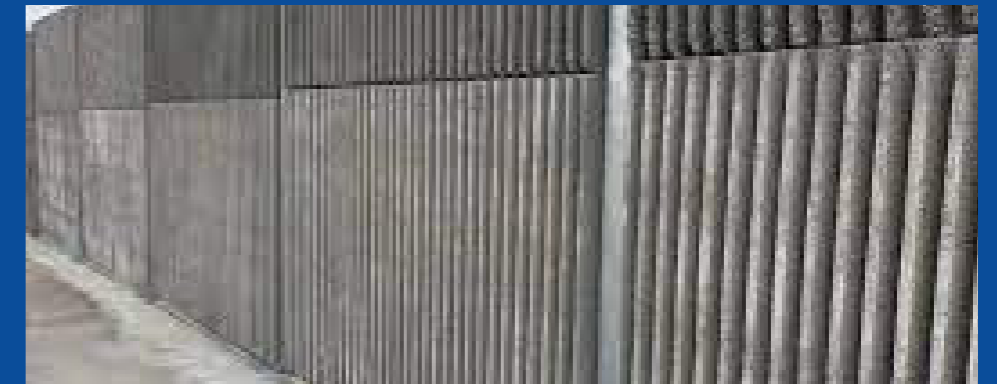
Anti-noise concrete screens.

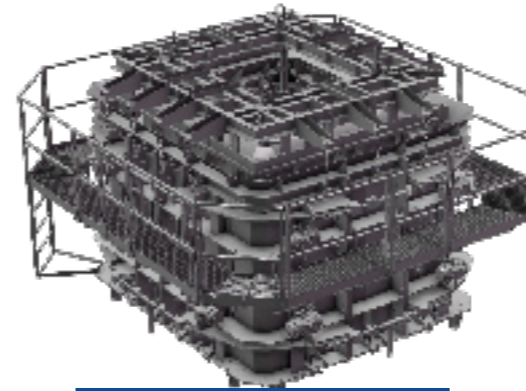
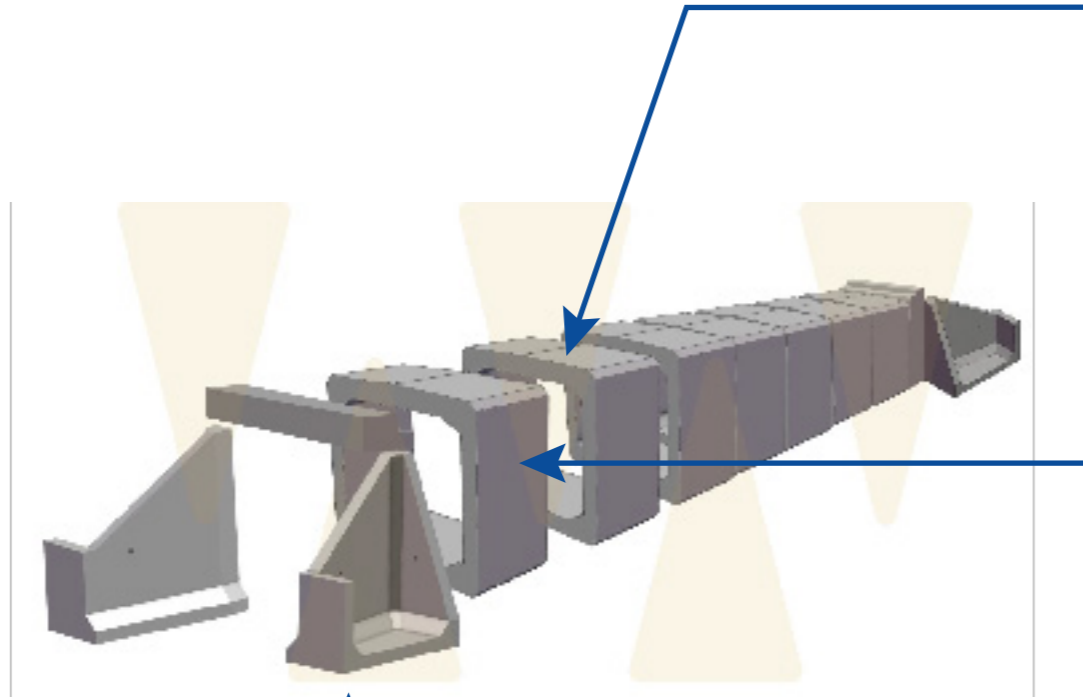
They are highly resistant to vehicle impact, frost or fire. Thanks to a soundproof panel they are able to mitigate noise.

Our tables are designed to produce precast concrete panels in various thicknesses. They can incorporate one or more side strips depending on the type of panels to be formed.



**Mold for noise barriers:
Several parts per day depending on mold configuration.**

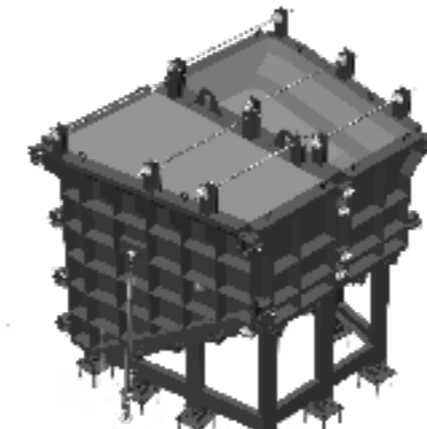




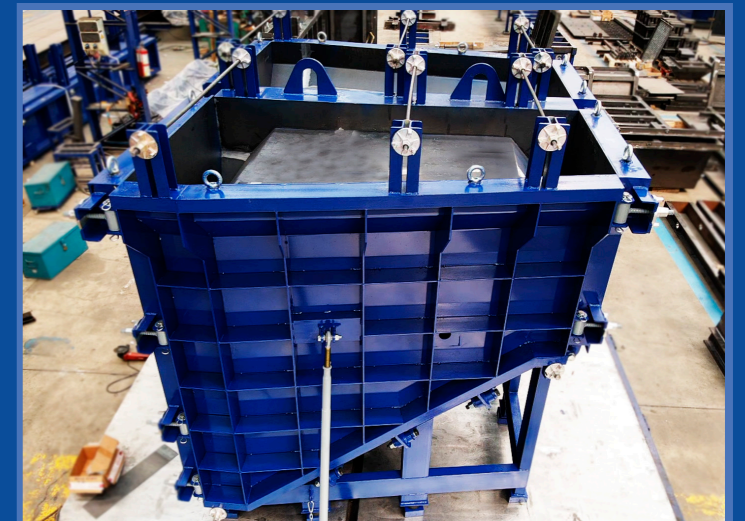
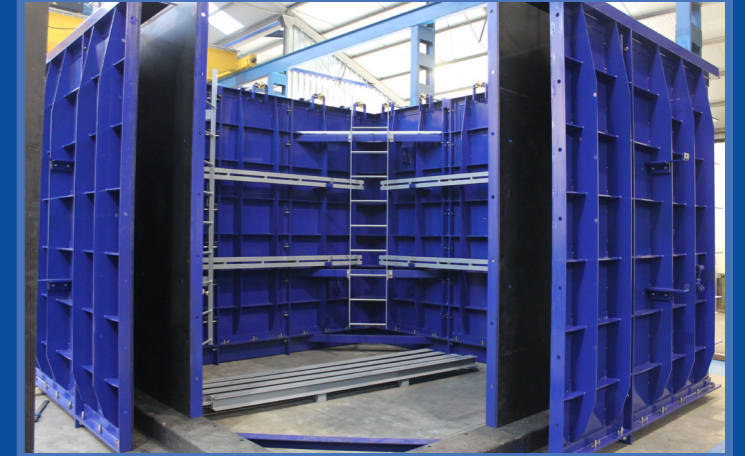
MT-20 - Dry cast:
Up to 10 pieces per day.

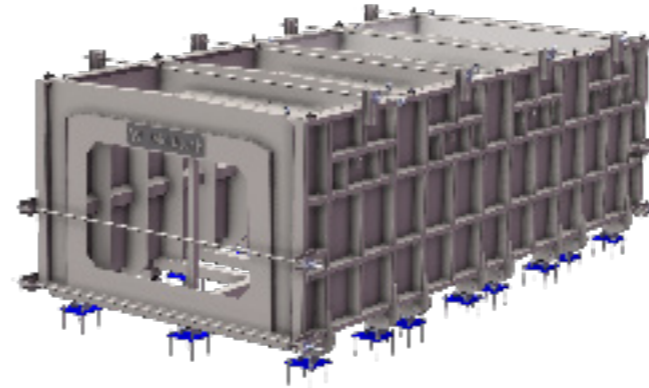
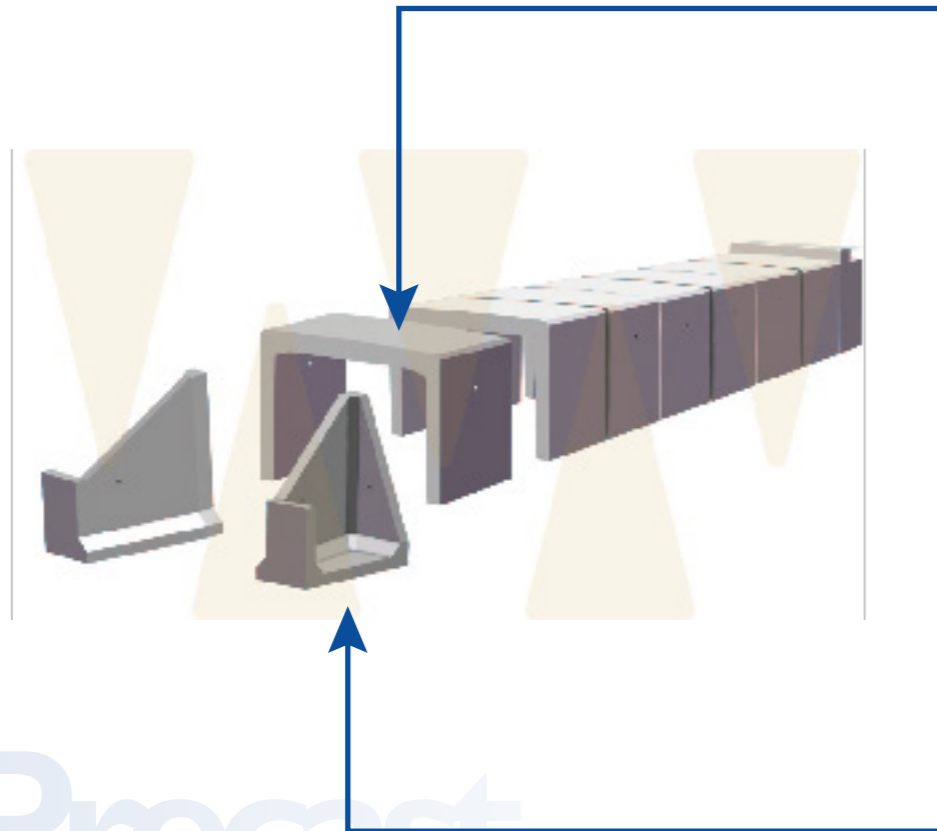


Modular Mold - Wet cast:
Up to 2 pieces per day.

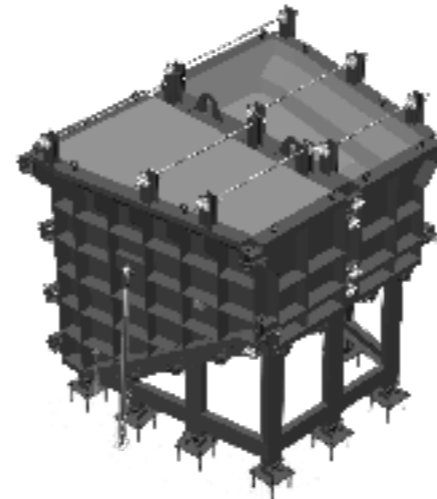


Edging elements: Up to 2 pieces per day.





U-shaped precast concrete elements for roads and bridges (P2)
Several parts per day in battery mold configuration.

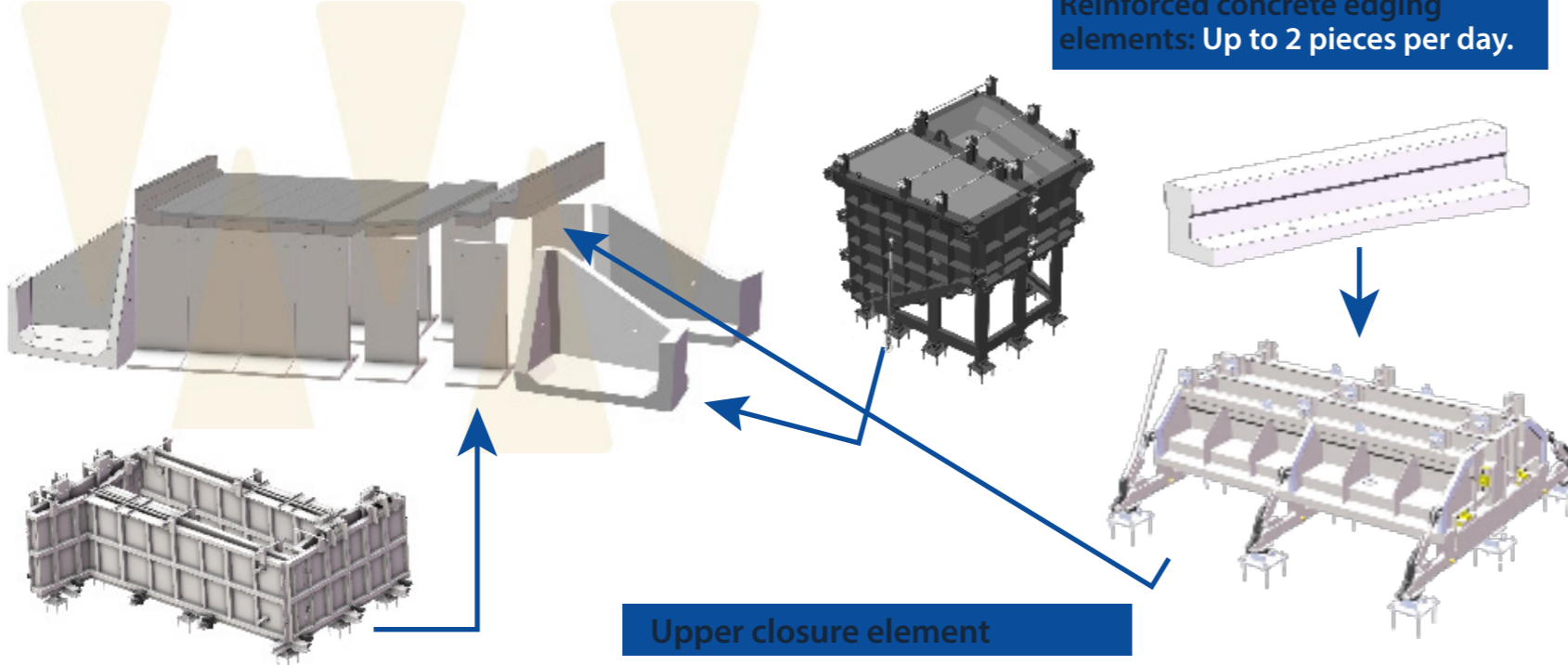


Edging elements: Up to 2 pieces per day.





ROAD UNDERPASSES



T-shaped precast concrete elements for roads and bridges (L0, L1, 2, L3)
Up to 2 pieces per day.





ROAD AND BRIDGE CONSTRUCTION

ADVANTAGES OF PRECAST IN TERMS OF COST AND EXECUTION TIME:

- *Minimum execution time, reduction of auxiliary tasks and labor.
- *Safety in its construction and use.
- *Maximum durability compared to other construction options.
- *Maximum resistance, even in adverse situations, for example, in fires.
- *Excellent cost/benefit ratio.
- *Controlled quality: The quality of the product is guaranteed by the manufacturing company, independent of the execution.
- *Versatility and design: Precast concrete products can be adapted to any technical or design need and are highly competitive in serial products.
- *Sustainability: The use of precast concrete means having optimal control of environmental, social and economic impacts both during construction and during subsequent use and management.





Moldtech

EQUIPMENT FOR PRECAST CONCRETE PLANTS

www.moldtechsl.es

info@moldtechsl.es



C/ Polysol Uno nº 40. Polígono Piedra Hincada
41500 - Alcalá de Guadaira - Seville - Spain
(+34) 955 444 190

Consult our
product catalog

