



EQUIPMENT FOR PRECAST CONCRETE PLANTS

**SPECIAL MOULDS FOR
SINGLE-FAMILY RESIDENTIAL CONSTRUCTION**



www.moldtechsl.es



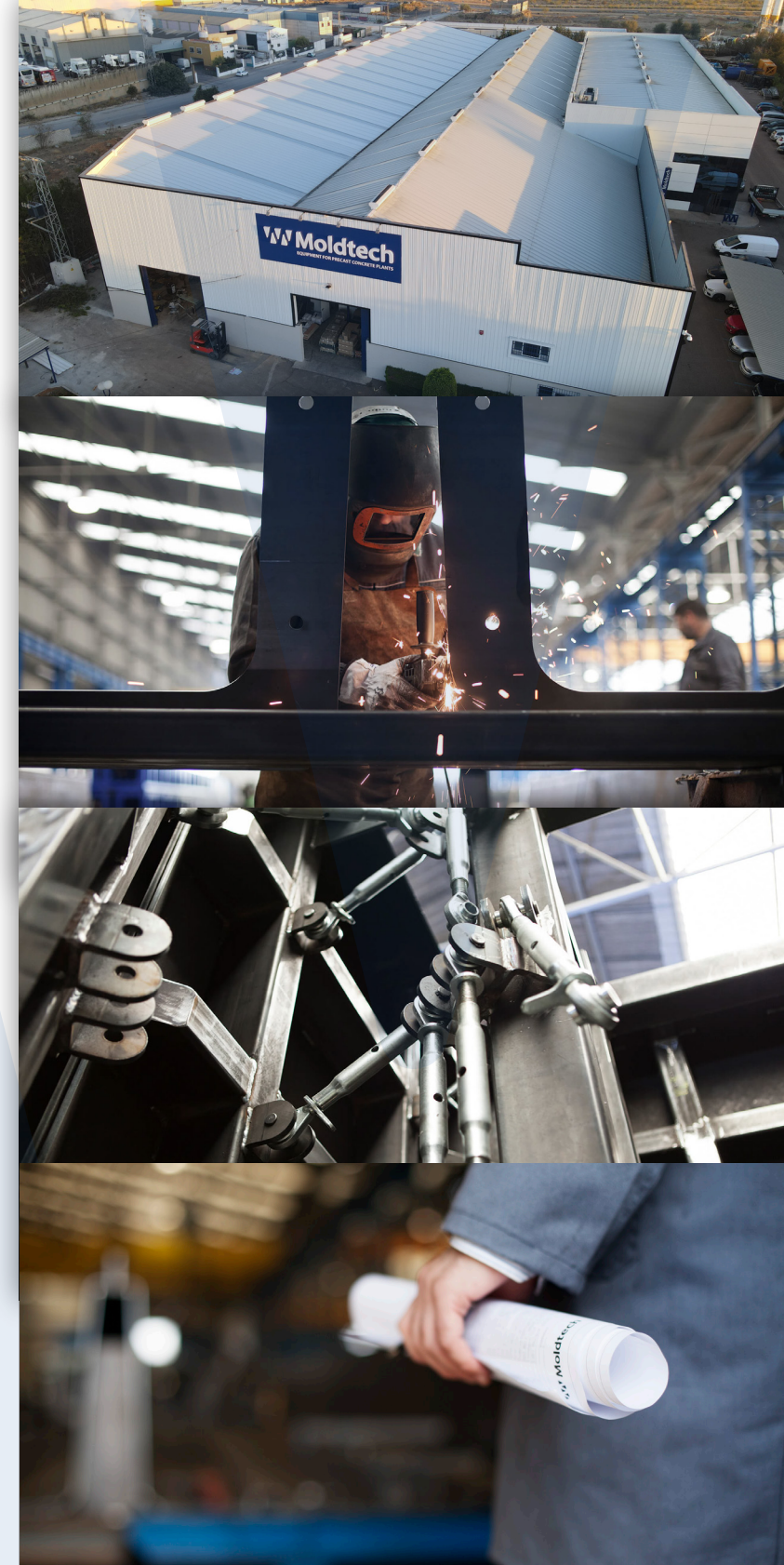
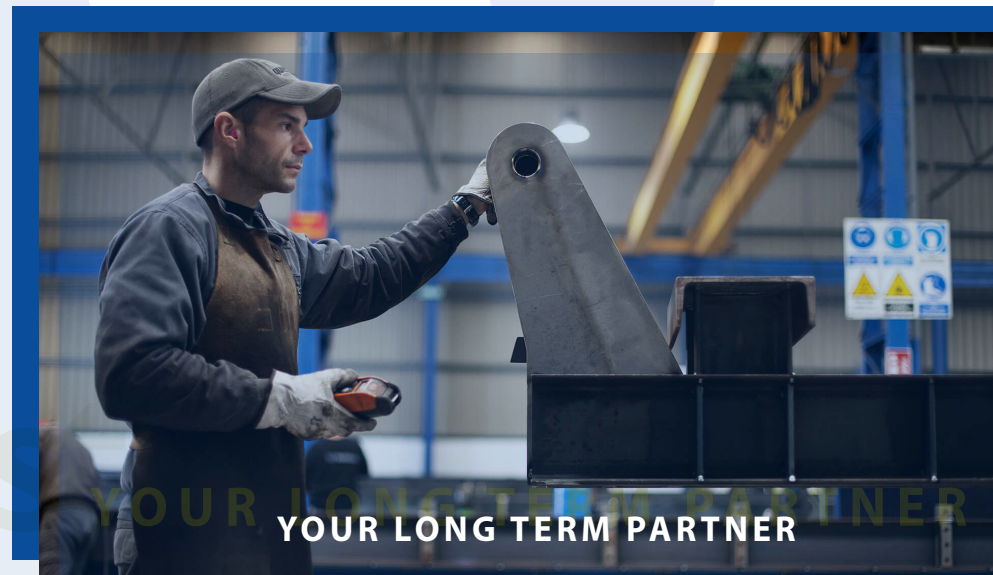
Residential
construction



RESIDENTIAL CONSTRUCTION OF SINGLE-FAMILY MODULAR HOMES

Moldtech offers a wide variety of molds to manufacture prefabricated concrete elements for the industrialization of single-family homes.

Moldtech, as an expert provider of equipment for precast concrete, will be your best long-term partner. Below we explain what elements you need to carry out this type of architecture and the equipment we offer to obtain them, guaranteeing the highest quality and safety throughout the production process.





RESIDENTIAL CONSTRUCTION OF MODULAR HOMES

SPECIAL MOULDS FOR RESIDENTIAL CONSTRUCTION



For this type of residential construction, we offer a variety of molds with which you can complete this type of architecture, easily and in record time.

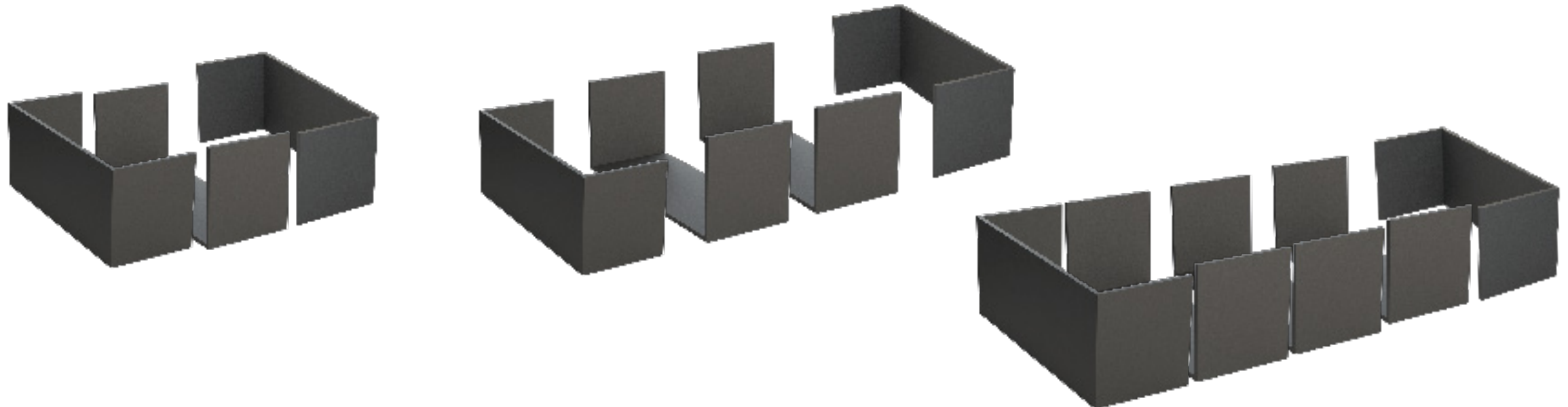




SPECIAL MOLDS FOR RESIDENTIAL CONSTRUCTION

10 ADVANTAGES OF MODULAR CONSTRUCTION:

- Speed of execution and improvement of the overall performance of the work.
- Quality control is done in the factory, much more reliable and rigorous than if it is done on site.
- Dimensional coordination, thus preventing subsequent corrections on site that cause deviations in time and cost.
- Capacity of concrete compared to other materials: durability, fire resistance, greater acoustic insulation, energy saving, greater stability and structural resistance.
- Fixed price: cost control.
- Compliance with deadlines: in addition to the speed that is substantially higher than on-site processes, the influence of weather conditions hardly has an impact.
- Maximum use of materials: zero or minimal debris, dry execution, resulting in less environmental impact.
- Greater job security: the reduction of trades largely eliminates the associated risks; In addition, the floors are closed completely as it advances.
- Possibility of reconciling the economy of mass production with the customization of the design.
- Versatility to configure numerous constructions.
- One of the great attractions that leads people to build a modular home is its flexibility.

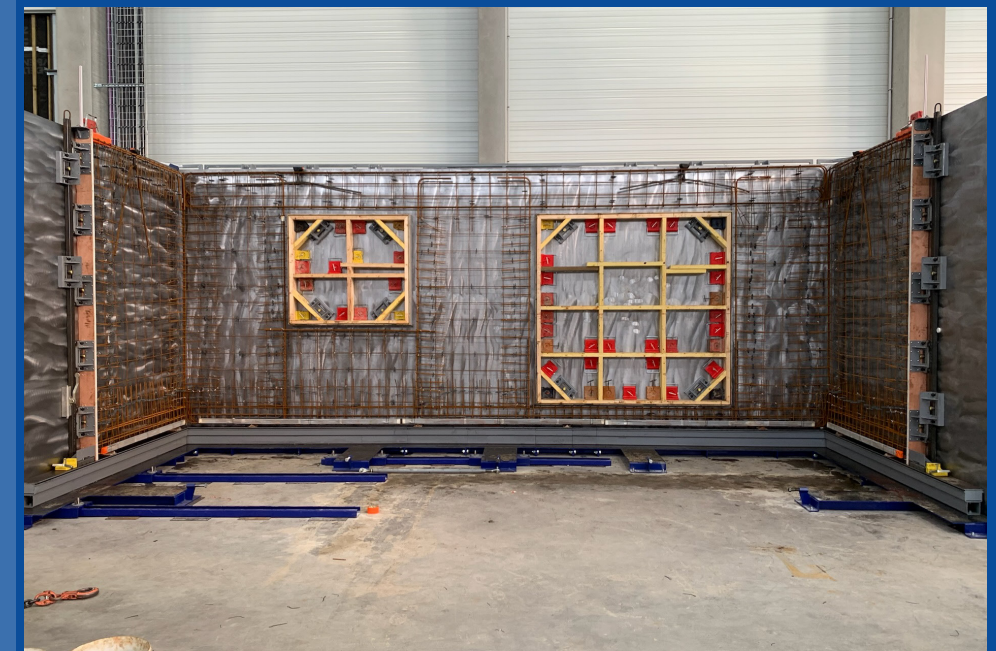
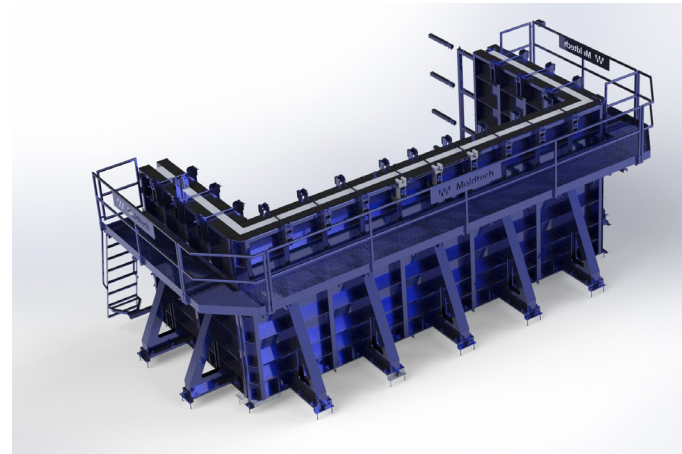
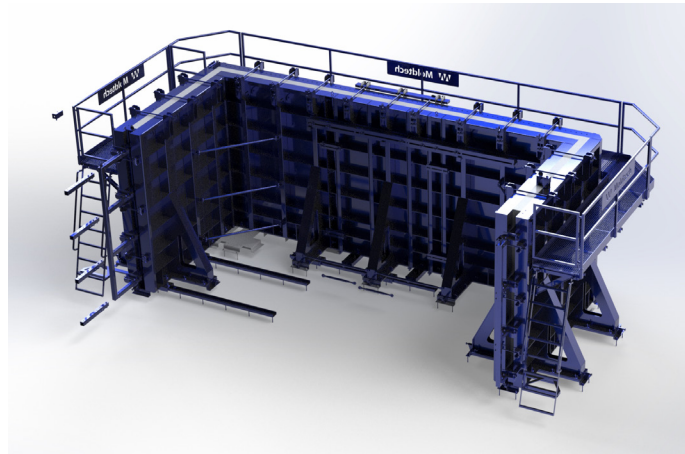




RESIDENTIAL CONSTRUCTION OF MODULAR HOMES

CLOSURE MODULE MOULD

With this mold the extreme parts of the room are made. Supplied with a set of shutters for doors and windows. These molds are modular, being able to manufacture modules of different widths.





RESIDENTIAL CONSTRUCTION OF MODULAR HOMES

INTERMEDIATE MODULES MOULD

With this mold the intermediate parts of the room are made. Supplied with a set of shutters for doors and windows. All the necessary intermediate modules can be used according to the project. These molds are modular, being able to manufacture modules of different widths.





RESIDENTIAL CONSTRUCTION OF MODULAR HOMES

PRODUCTION PROCESS

www.moldtechsl.es





RESIDENTIAL CONSTRUCTION OF MODULAR HOMES

PREFABRICATED MODULES WITH MOLDTECH MOULDS

Moldtech offers a variety of configuration possibilities in its moulds so that they adapt to your needs and obtain the best results in a short period of time. The moulds allow for adjustment to suit different projects.





Moldtech
EQUIPMENT FOR PRECAST CONCRETE PLANTS

www.moldtechsl.es

info@moldtechsl.es



C/ Polysol Uno nº 40. Polígono Piedra Hincada 41500 - Alcalá de Guadaira - Seville - Spain
(+34) 955 444 190