

# WHO WE ARE

Moldtech is a family-run business founded in 1986. From the beginning, our aim has been to become a global player in the precast concrete industry, providing comprehensive technological solutions for machinery and plant equipment.

More than 36 years of experience guarantee our commitment as a long-term partner. We design, develop and install integrated production systems, adapted to our clients' requirements, meeting the highest European quality and safety standards.

Clients in more than 50 countries in Europe, America, Africa, Asia and Oceania endorse our extensive business track. Our global business model guarantees our competitiveness and our readiness to cooperate with clients worldwide.

## CIVIL WORKS



## RESIDENTIAL



## INDUSTRIAL



**Moldtech**  
EQUIPMENT FOR PRECAST CONCRETE PLANTS



### SEVILLE, SPAIN, EUROPE

C/ Polysol Uno, 40  
Pol. Industrial Piedra Hincada  
41500 Alcalá de Guadaíra, Seville

TL\_ +34 955 44 41 90  
E\_ info@moldtechs.es

[www.moldtechs.es](http://www.moldtechs.es)  
in @



EQUIPMENT FOR PRECAST CONCRETE PLANTS

**DESIGN,  
MANUFACTURING  
AND  
COMMISSIONING**



A LONG-TERM PARTNER

# SERVICES

Tailor made equipment.  
Flexibility. Close cooperation.  
Competitiveness.

## ADVANCED PRODUCTIVE INSTALLATIONS

Engineering and production process optimization to guarantee high quality standards.

## HIGHLY TECHNOLOGICAL PRODUCTS

We transform our clients' requirements in moulds, machinery and integrated production systems that allow achieving high productivity and quality to increase their competitiveness.

## COMPREHENSIVE SOLUTIONS

We work in close cooperation with our clients since the initial concept and requirements to the final commissioning of complete turn key plants for precast concrete production worldwide.

ENGINEERING AND  
BUSINESS CONSULTANCY

TRAINING, MAINTENANCE AND  
AFTER-SALES SERVICE

DESIGN  
ENGINEERING

**Moldtech**

INSTALLATION AND  
COMMISSIONING

PRODUCTION AND  
MANUFACTURING ENGINEERING

LOGISTICS

# FEATURED PRODUCTS

Wide range of technological solutions at your service

ISO 9001

BUREAU VERITAS  
Certification



### HYDRAULIC MOULD FOR 3D MODULAR HOUSING - 'PPVC'

Modular construction of 3D prefabricated housing units in a single casted piece, with four walls and floor or roof, with or without interior partitions, with all integrated installations, for residential and service buildings projects.



### UNIVERSAL PRESTRESSING CASTING BED SYSTEM WITH FIXED HEADS

Manufacture of prestressed beams with stressing heads installed in pit foundation, consisting usually of an active stressing head and a passive stressing head.



### 'MT-20' DRY CAST SYSTEM FOR THE PRODUCTION OF BOX CULVERTS

High productivity system for the production of box culverts dry-cast which are used for drainage and highway underpass.



### HYDRAULIC MOULD FOR 3D BATHROOM UNITS - 'PBU'

Modular construction of 3D prefabricated bathroom units in a single casted piece, including floor and walls, with all the necessary sanitary installations integrated.



### SELF-STRESSING SYSTEM

Production of linear structural elements (slabs, beams, and joist beams) prestressed with two stressing beams running in parallel to the casting bed, by means of integrated stressing and destressing heads.



### DOUBLE MOULD FOR 'NEW JERSEY' BARRIERS

Moulds for the production of 'New Jersey' barriers and other kinds of concrete barriers and parapets for the safety of vehicles on roads and bridges.



### VERTICAL BATTERY MOULD FOR WALL PANELS

High productivity system of architectural panels, with the desired dimensions and with a high-quality finish (smooth or engraved) on both sides, using a minimum of factory space.



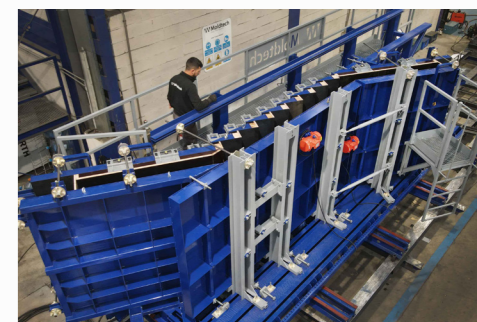
### MOULD FOR 'DELTA' BEAMS

Production of prestressed 'Delta' type beams, in various lengths and heights, used for the construction of industrial buildings, warehouses or agricultural and livestock buildings, among other constructions.



### MOULD FOR STAIRCASES

Manufacture of concrete staircases with the possibility to adjust their width, their length, their number of steps, their thickness and to include landings.



### TILTING TABLE

Manufacture of wall panels in various thicknesses, for architectural façades of residential and commercial buildings, as well as for industrial buildings.



### MOULD FOR REINFORCED COLUMNS AND BEAMS

Production of columns and beams for all types of structures for residential, industrial and commercial buildings as well as for public works projects.



### AUTOMATIC CONCRETE DISTRIBUTOR

Autonomous distribution of concrete mix for the production of industrial and residential panels, with automated movements activated from a fixed control panel or by remote control.



### STATIONARY TABLE

Manufacture of panels for residential and industrial building façades, as well as production of slabs and pre-slabs for the construction of floors and bridge decks.



### SELF-REACTING MOULD FOR 'TT' SLABS

Prestressed double ribbed 'TT' slabs for roof elements in industrial and commercial buildings.



### 'GIRAFFE' VEHICLE

Vehicle with diesel engine for transporting and pouring concrete, which solves the problem of logistics in precast plants and provides an alternative to the use of the gantry crane for the transport of concrete.

